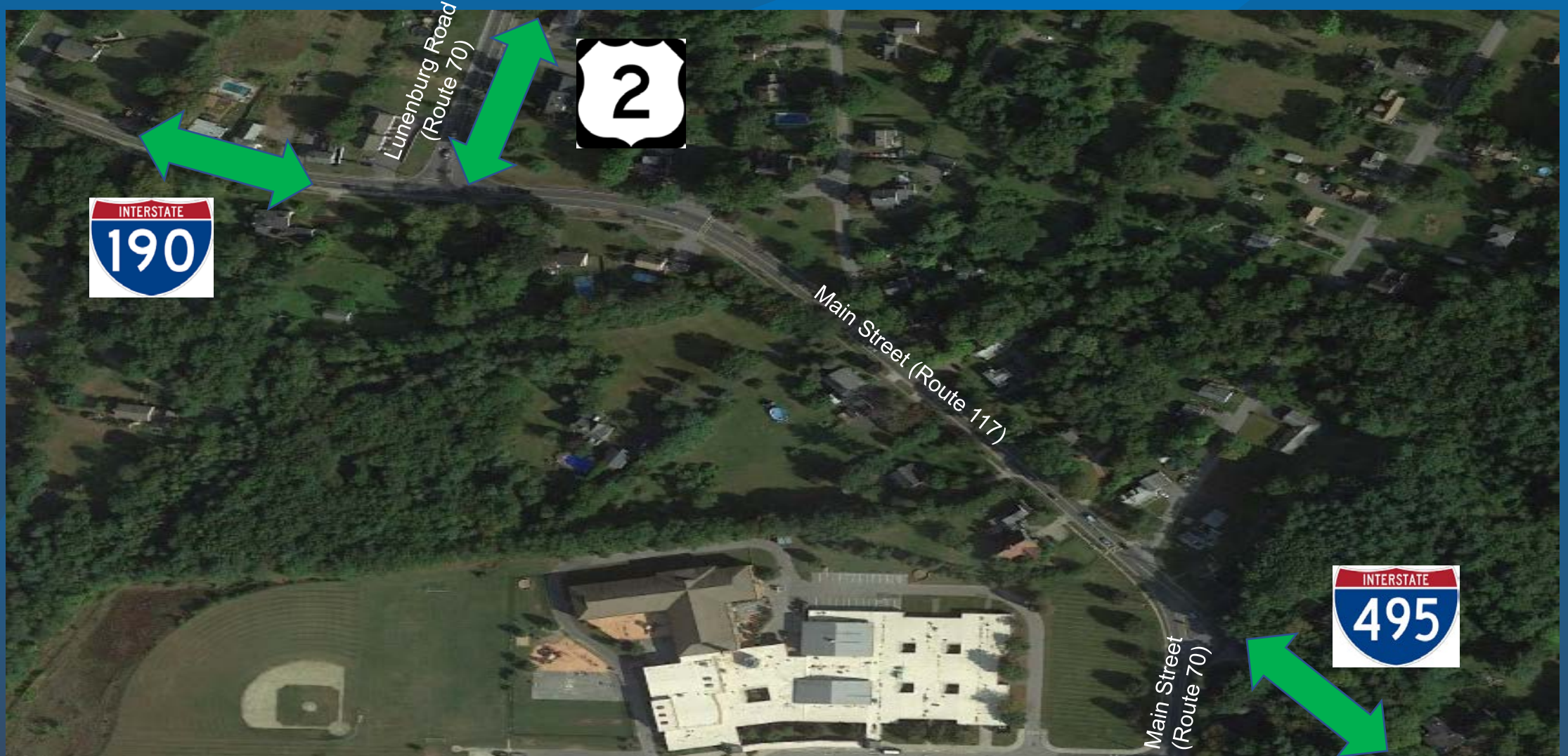


# Main Street (Route 70/117) Transportation Improvements Town of Lancaster, MA MassDOT Project #608779

Public Informational Meeting  
January 7, 2019  
7:00 PM



# Project Location



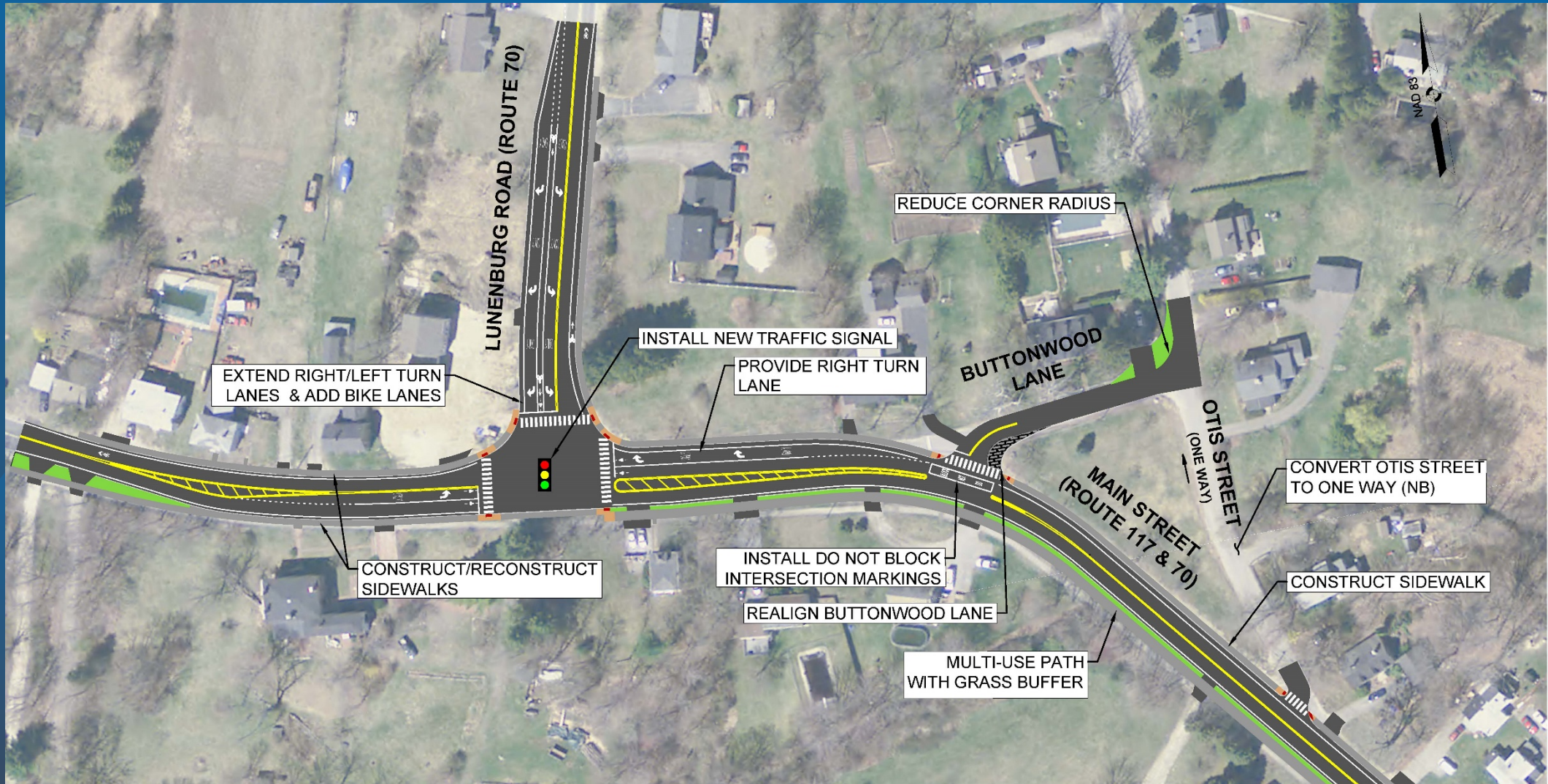
# Project Scope Recap

- 1. Congestion & Crash History | Traffic Signals, Turn Lanes, Protected Left-Turn to Lunenburg Rd**
- 2. Pedestrian Accessibility & Safety | New Sidewalk North Side, Shared-Use Path South Side, New Curb Ramps, Accessible Pushbuttons**
- 3. Safety & Comfort for Bicyclists | Shared-Use Path on Main St, Bike Lanes on Lunenburg Rd**
- 4. Unsafe Crosswalks | Protected Crossings at Signals**
- 5. Drainage Issues | Upgrade Storm Drain System, Install Granite Curb**



# Proposed Improvements

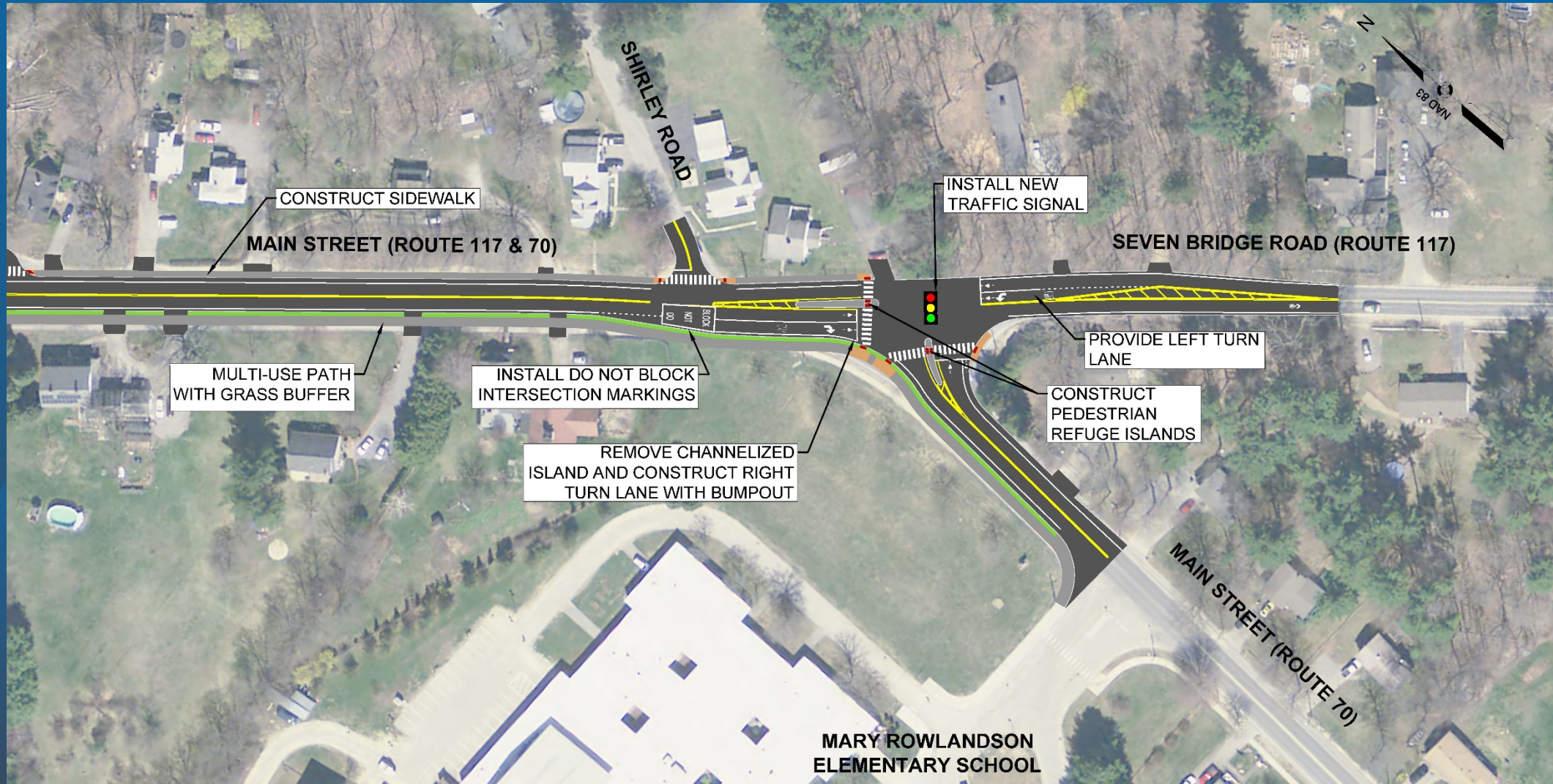
## Main Street (Route 117) @ Lunenburg Road (Route 70)





# Proposed Improvements

## Main St (Route 70/117) @ Seven Bridge Rd (Route 117)





# Proposed Improvements Main Street (Route 70/117)



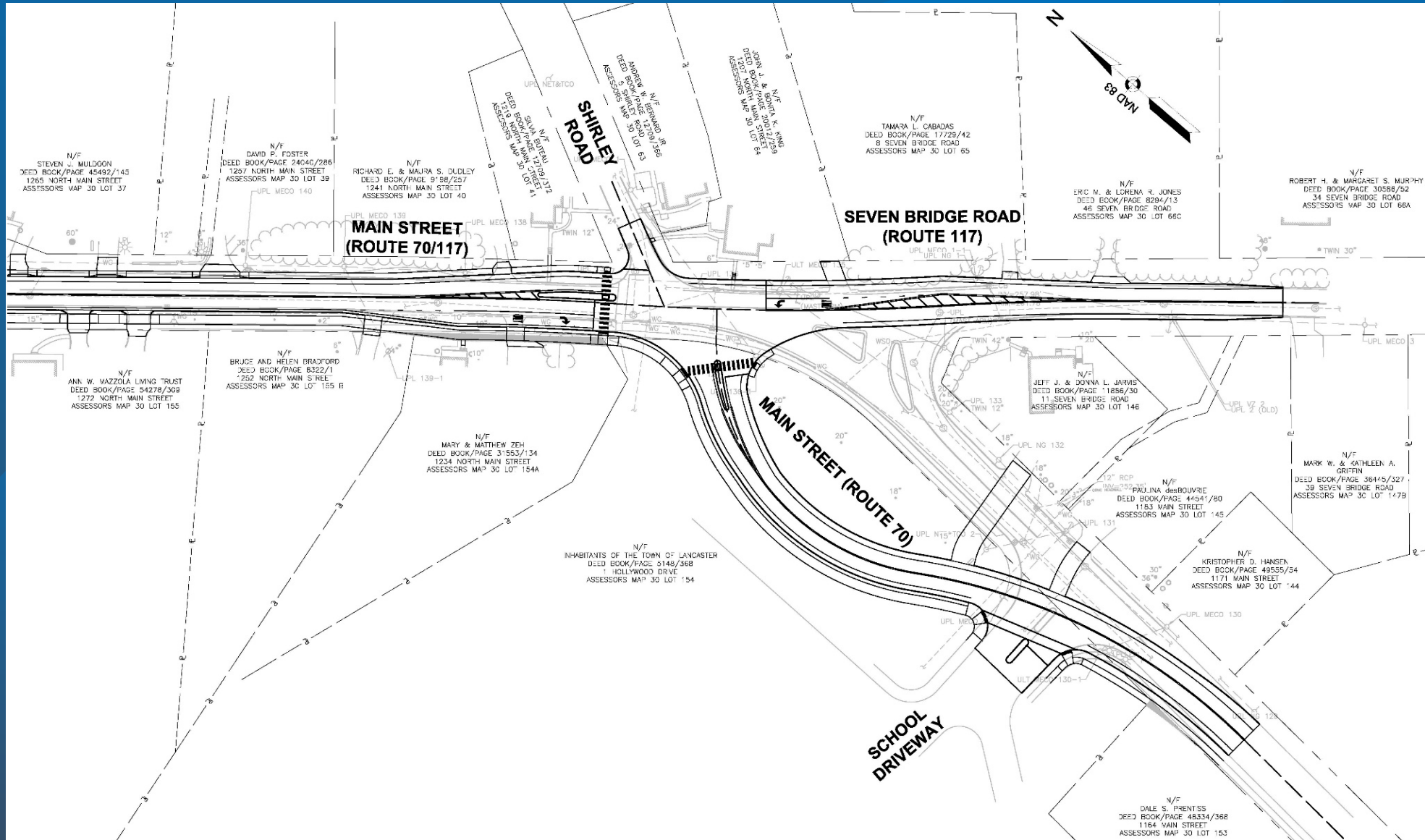


# **Project Activities Since 25% Design Public Hearing (May 2018)**

- **Evaluate realignment of Main Street opposite Shirley Road**
- **Wetland flagging**
- **Perform additional survey**
- **Design Modifications:**
  - **Otis Street at Buttonwood Lane – reduced curb radius**
  - **Otis Street to remain open to one-way northbound traffic**
  - **Add “Do Not Block” intersection markings & signs at Shirley Road & Buttonwood Lane**

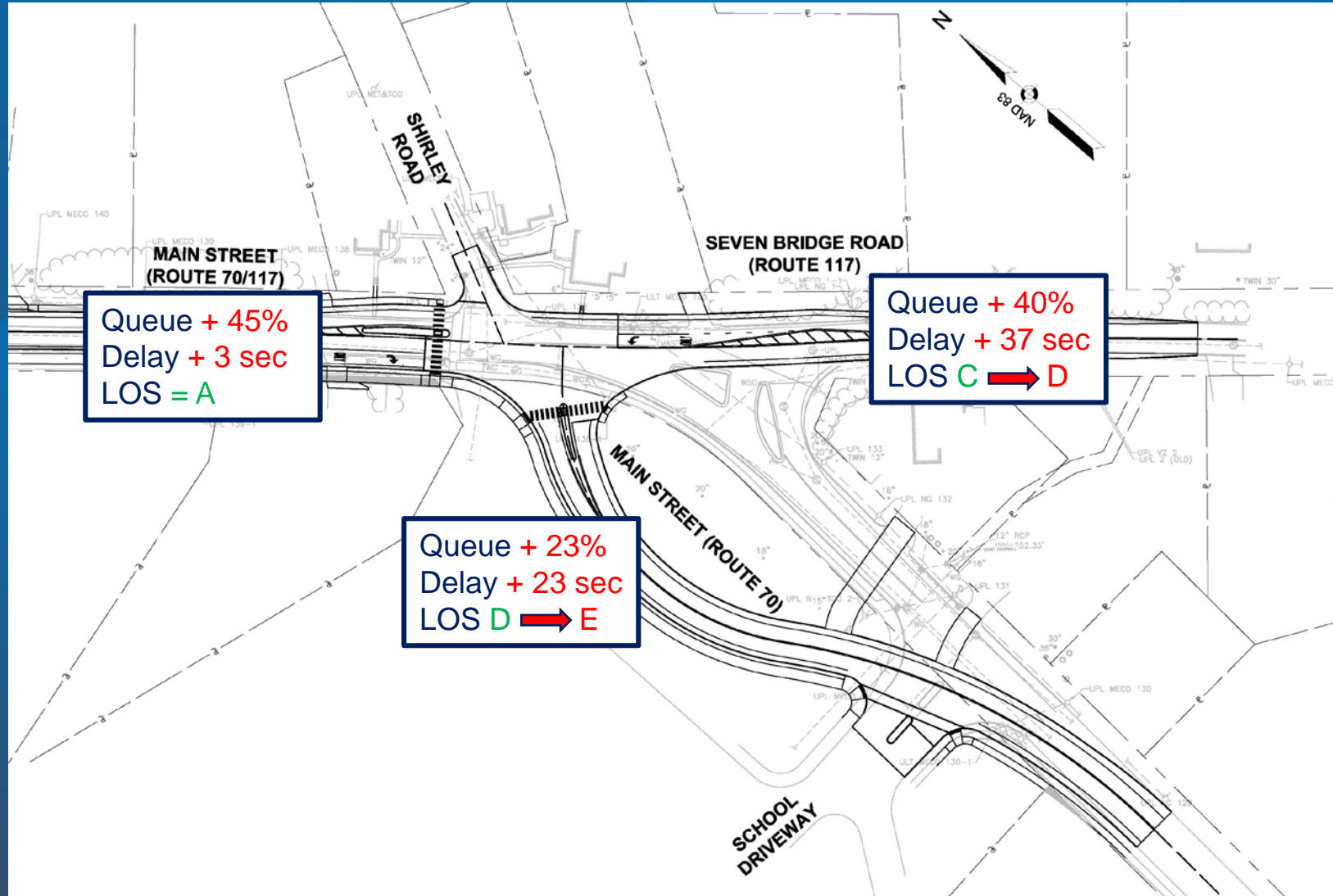


# Potential Main Street Realignment

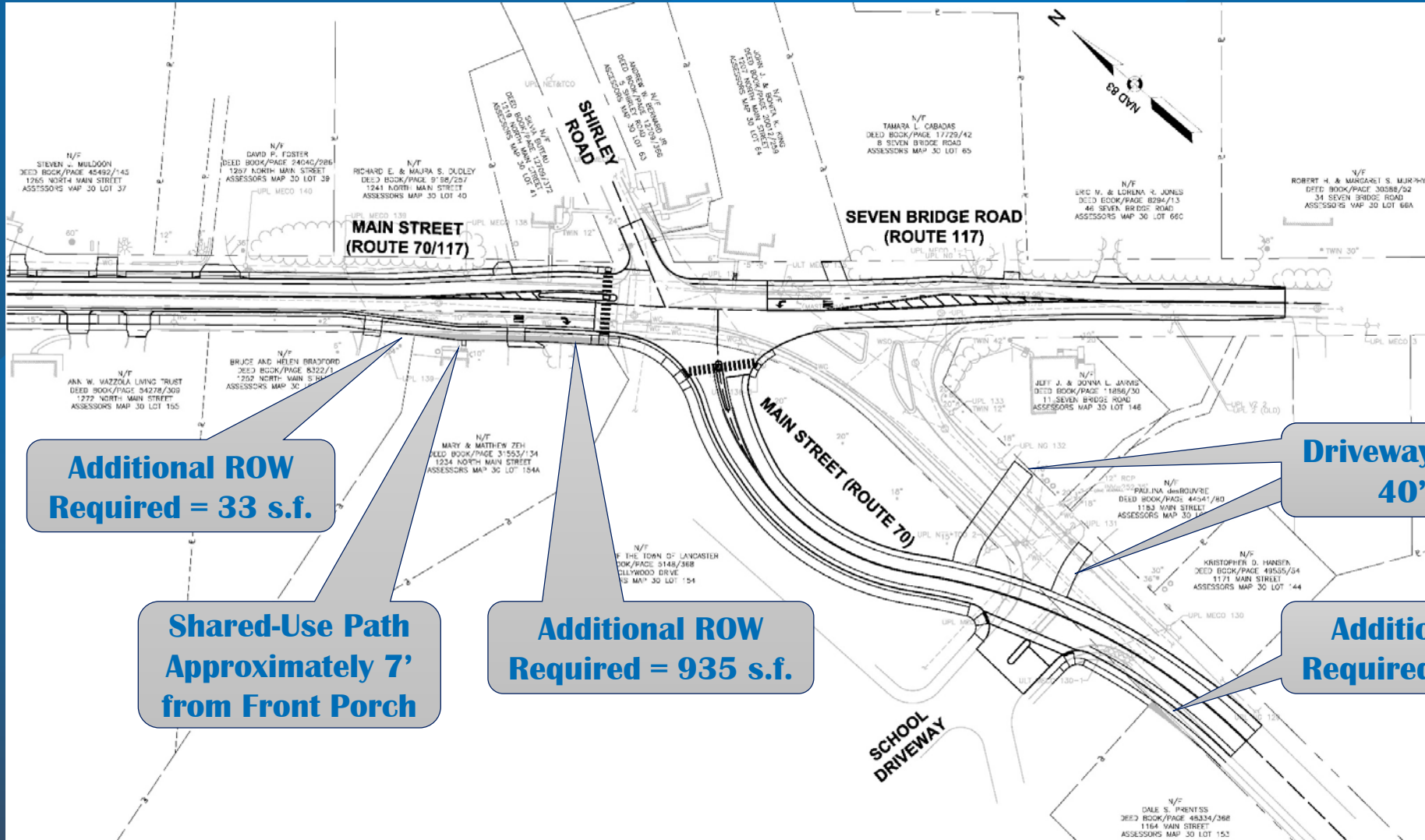




# Potential Main Street Realignment Degraded Operations (PM Peak)

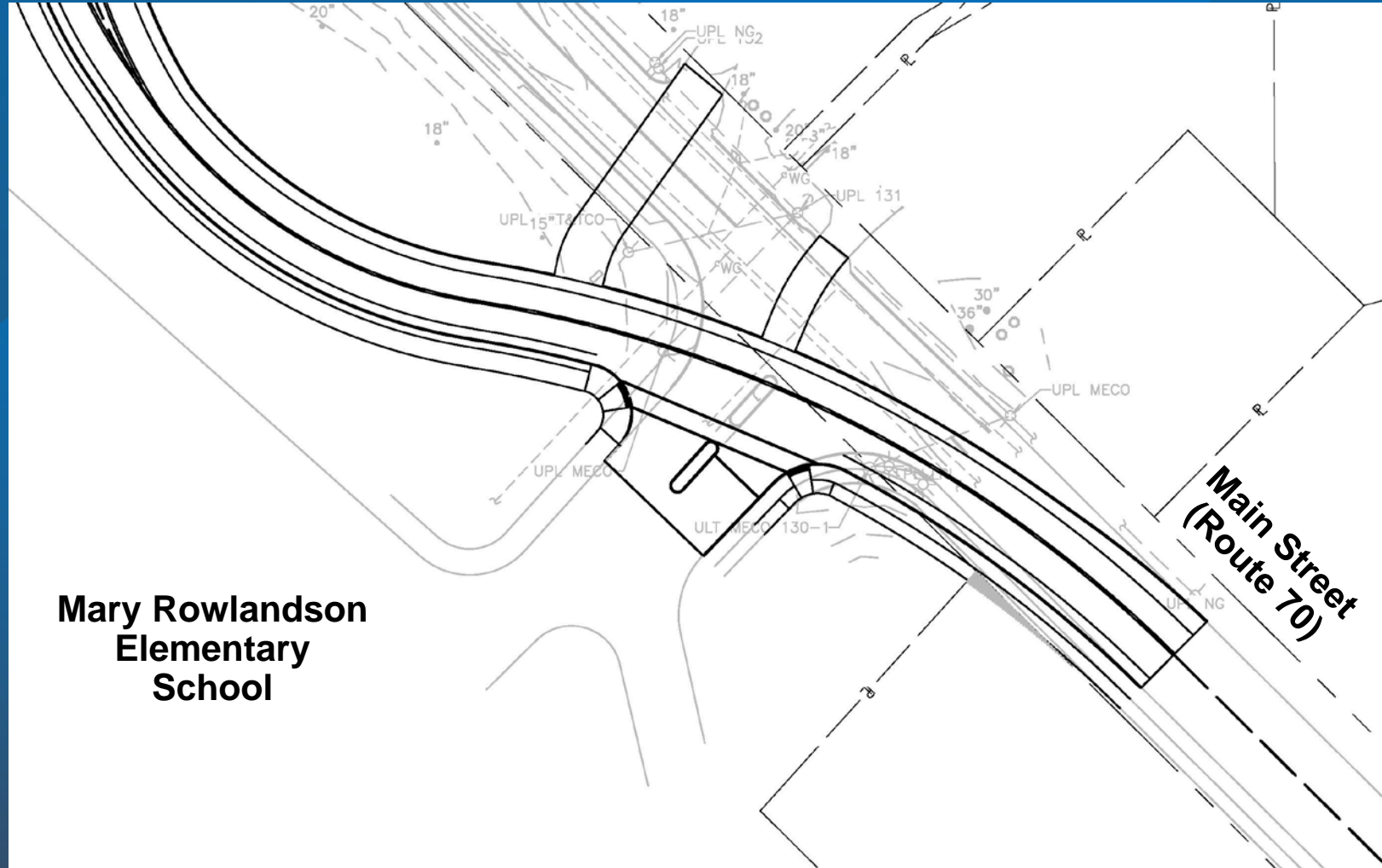


# Potential Main Street Realignment Private Property Impacts

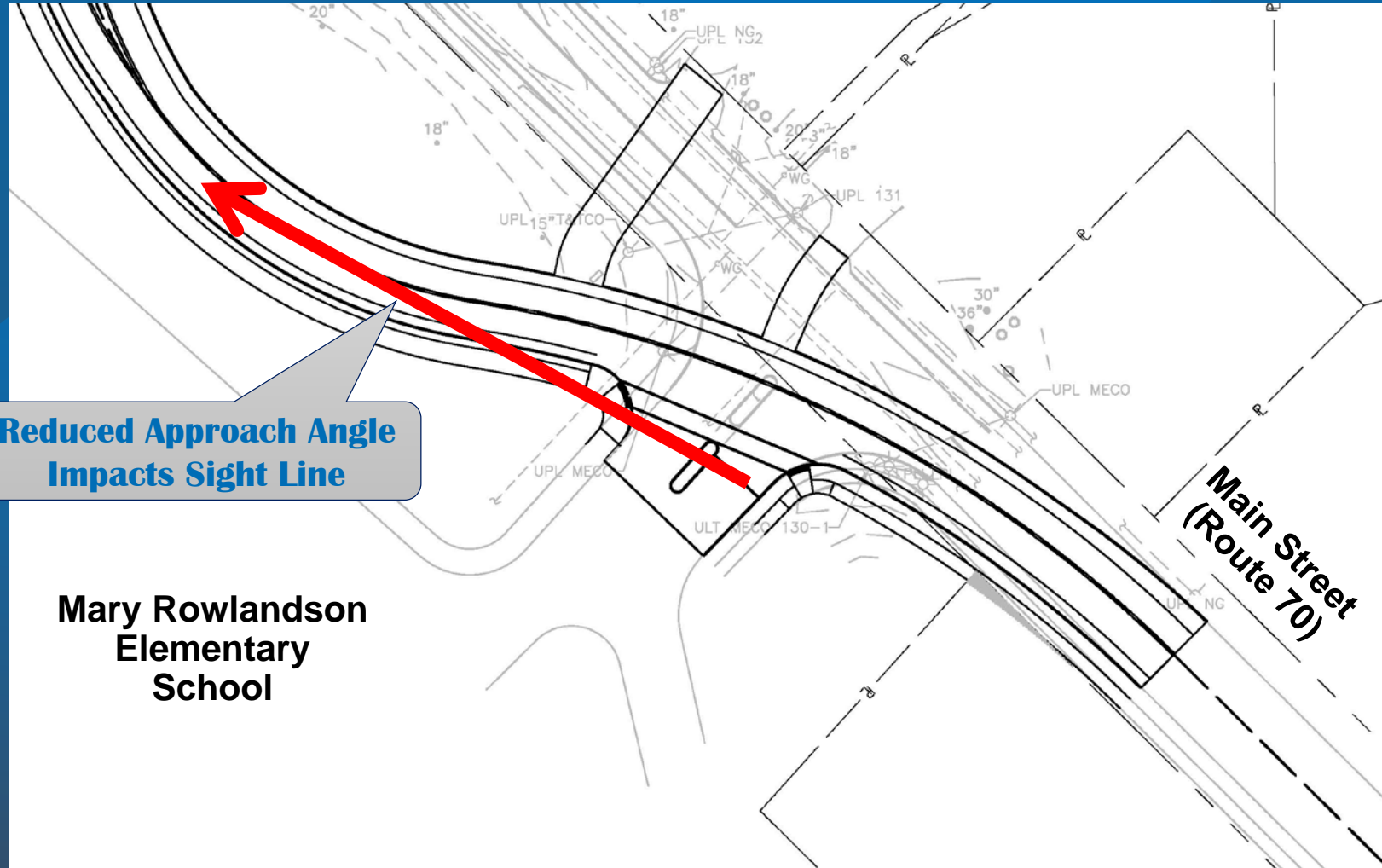




# Potential Main Street Realignment Impacts to School Access & Operations

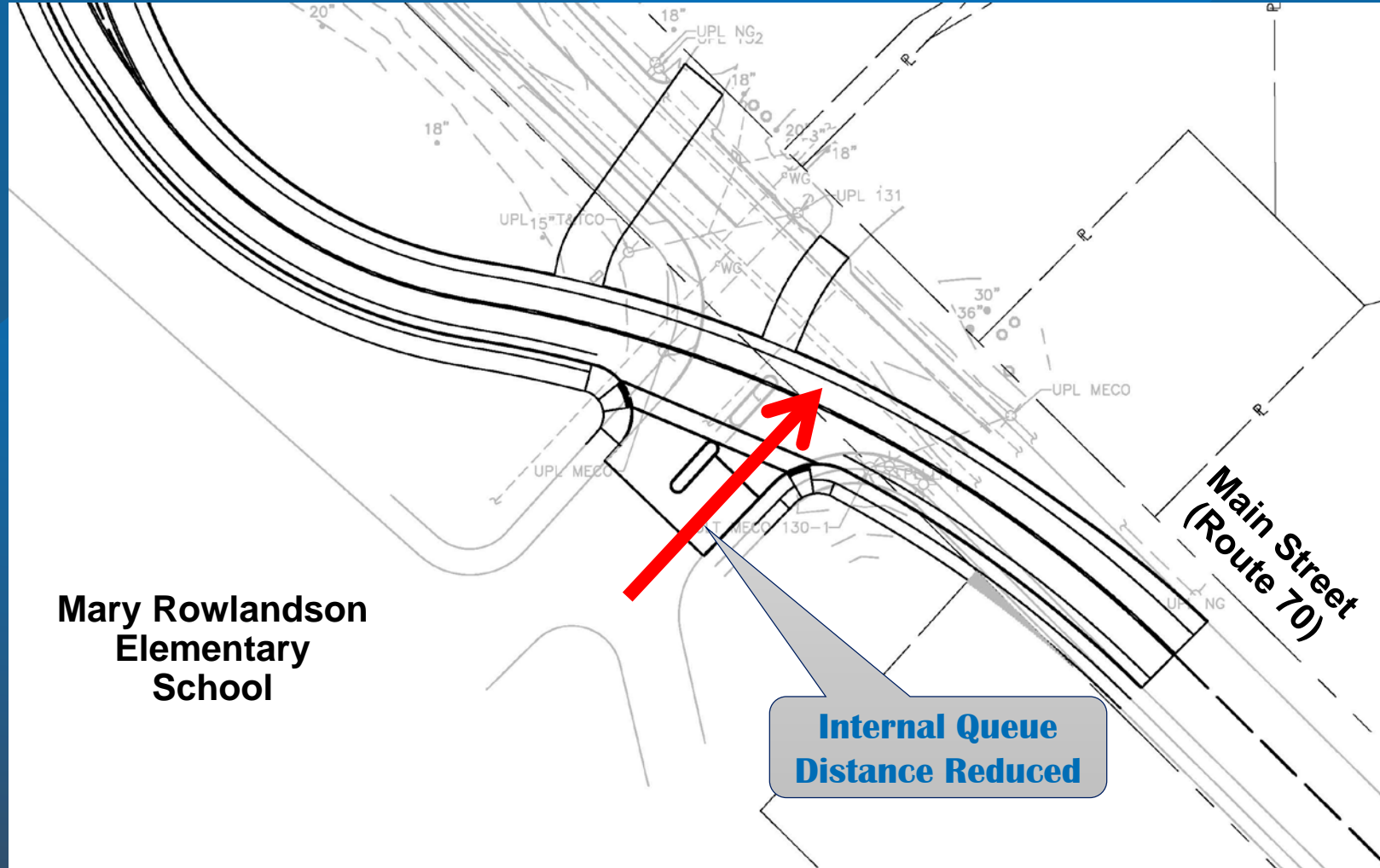


# Potential Main Street Realignment Impacts to School Access & Operations





# Potential Main Street Realignment Impacts to School Access & Operations

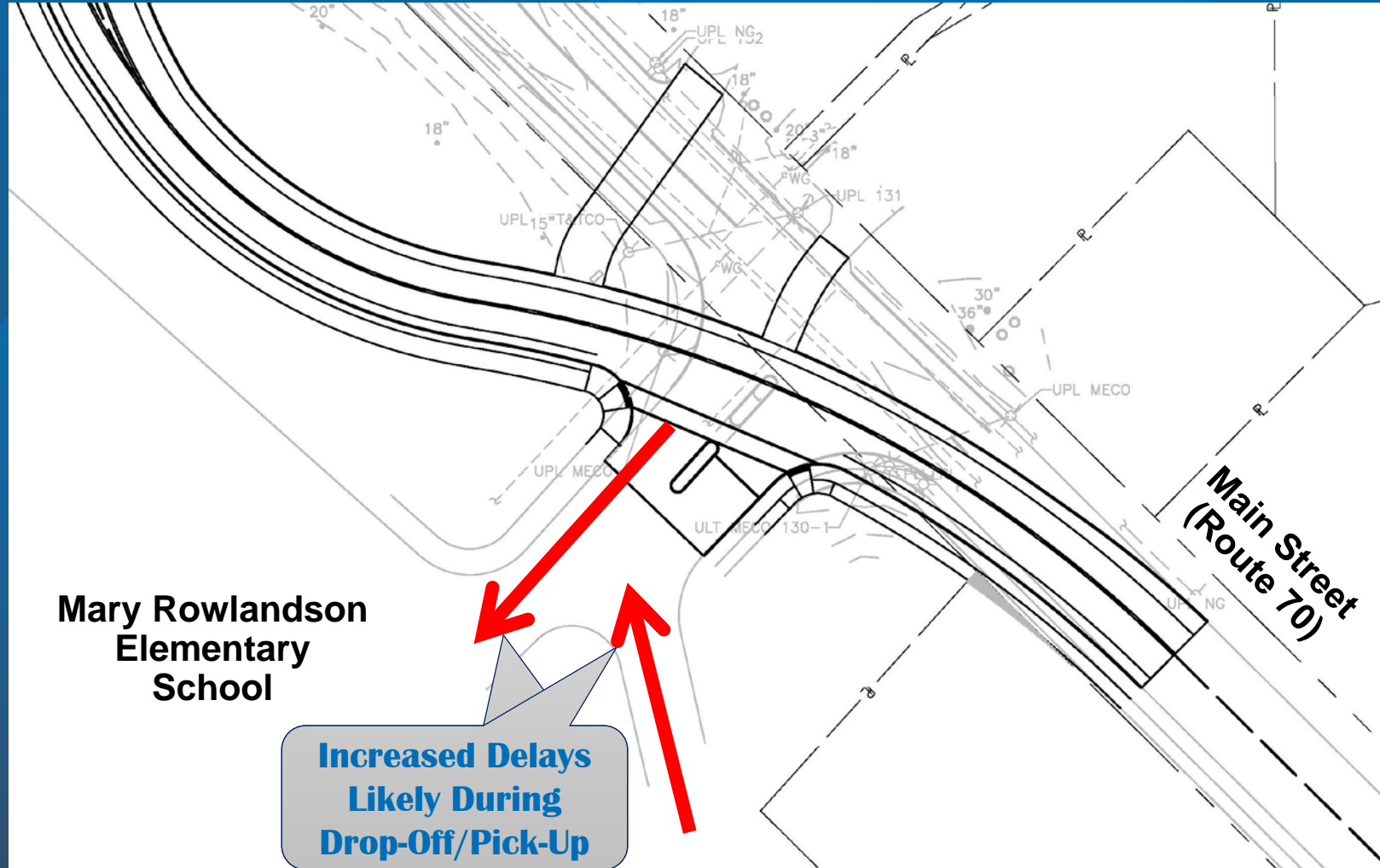




## Internal Queue Distance Reduced



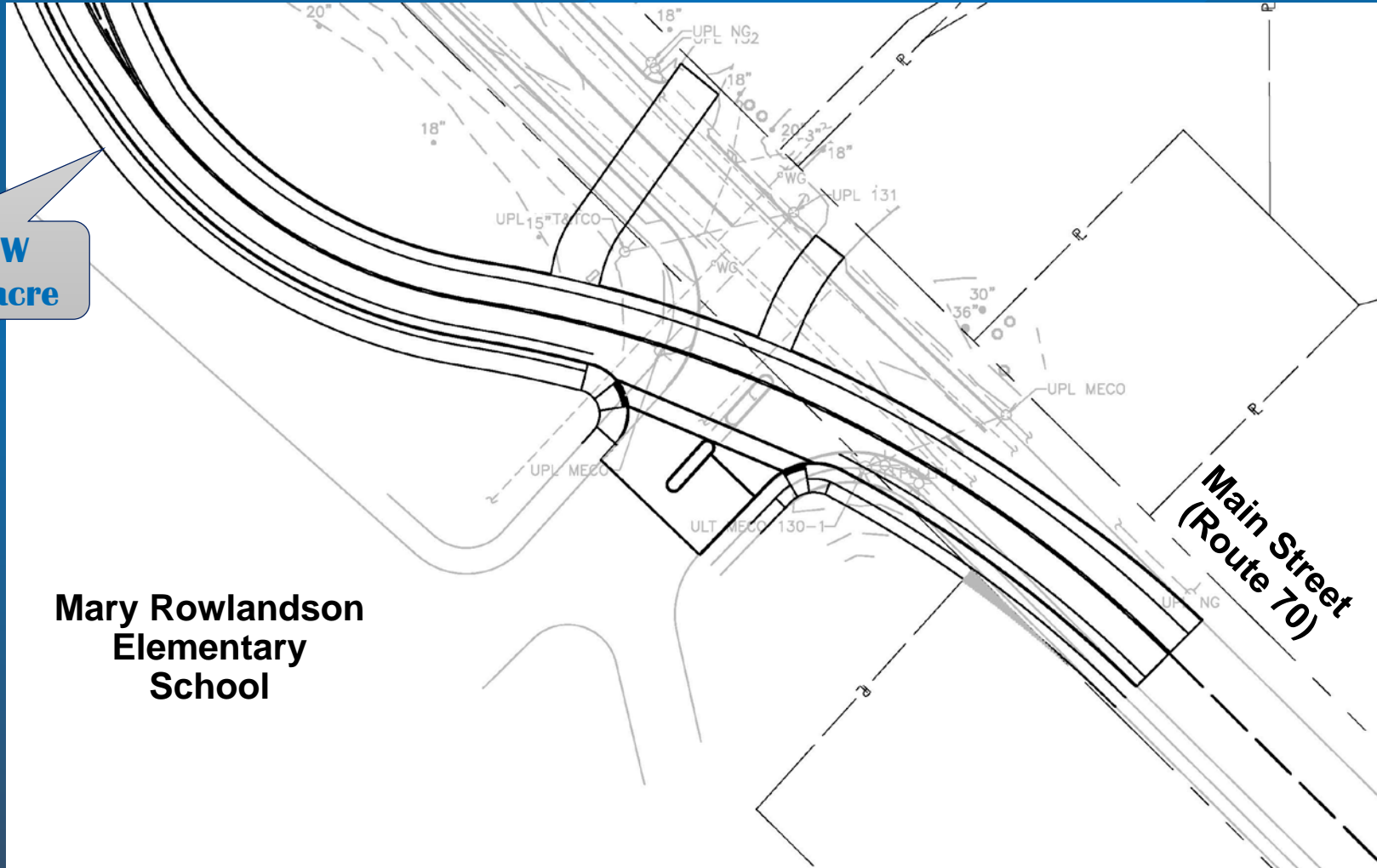
# Potential Main Street Realignment Impacts to School Access & Operations



# Potential Main Street Realignment Impacts to School Access & Operations

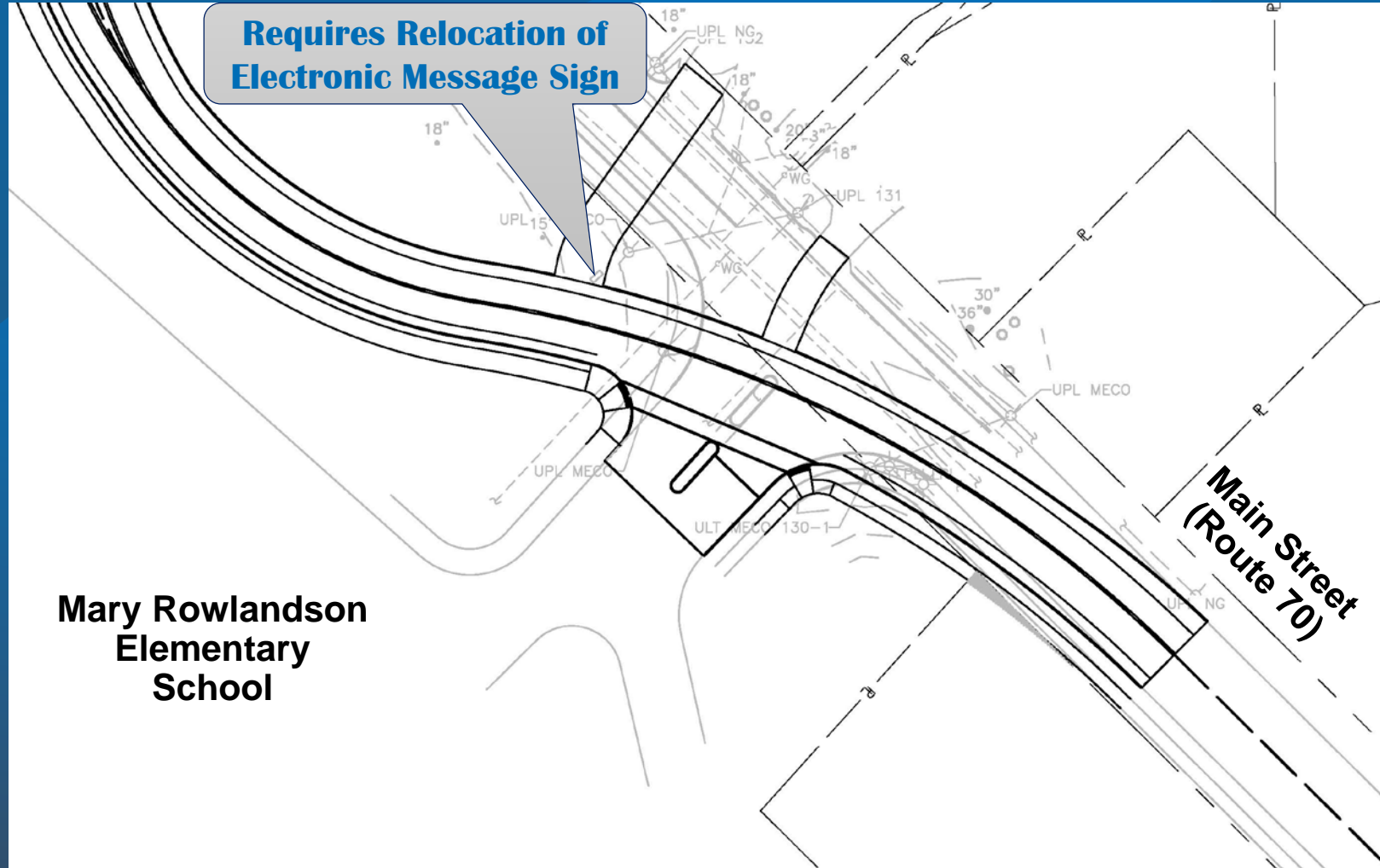
**Additional ROW  
Required =  $\pm 1$  acre**

**Mary Rowlandson  
Elementary  
School**

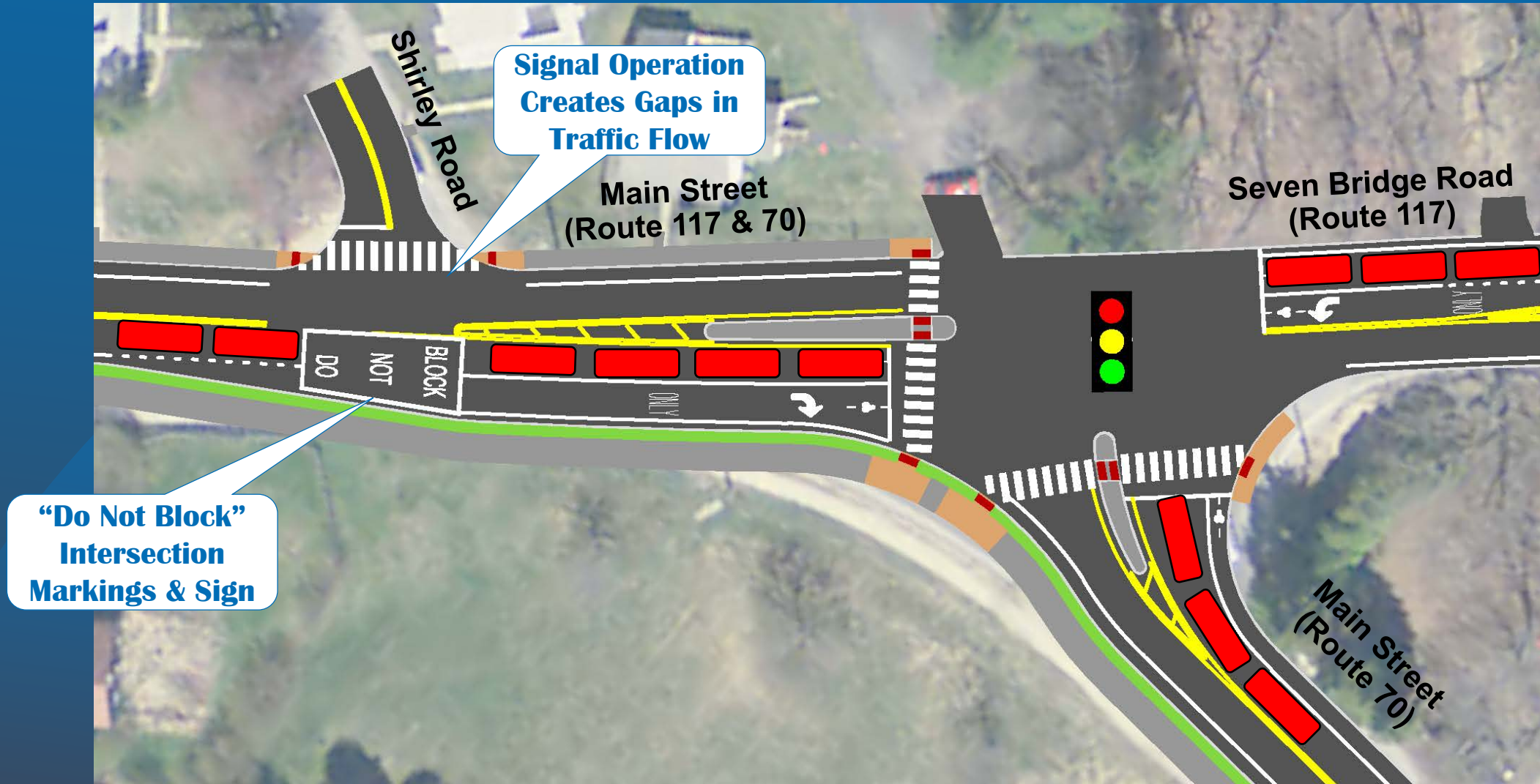




# Potential Main Street Realignment Impacts to School Access & Operations

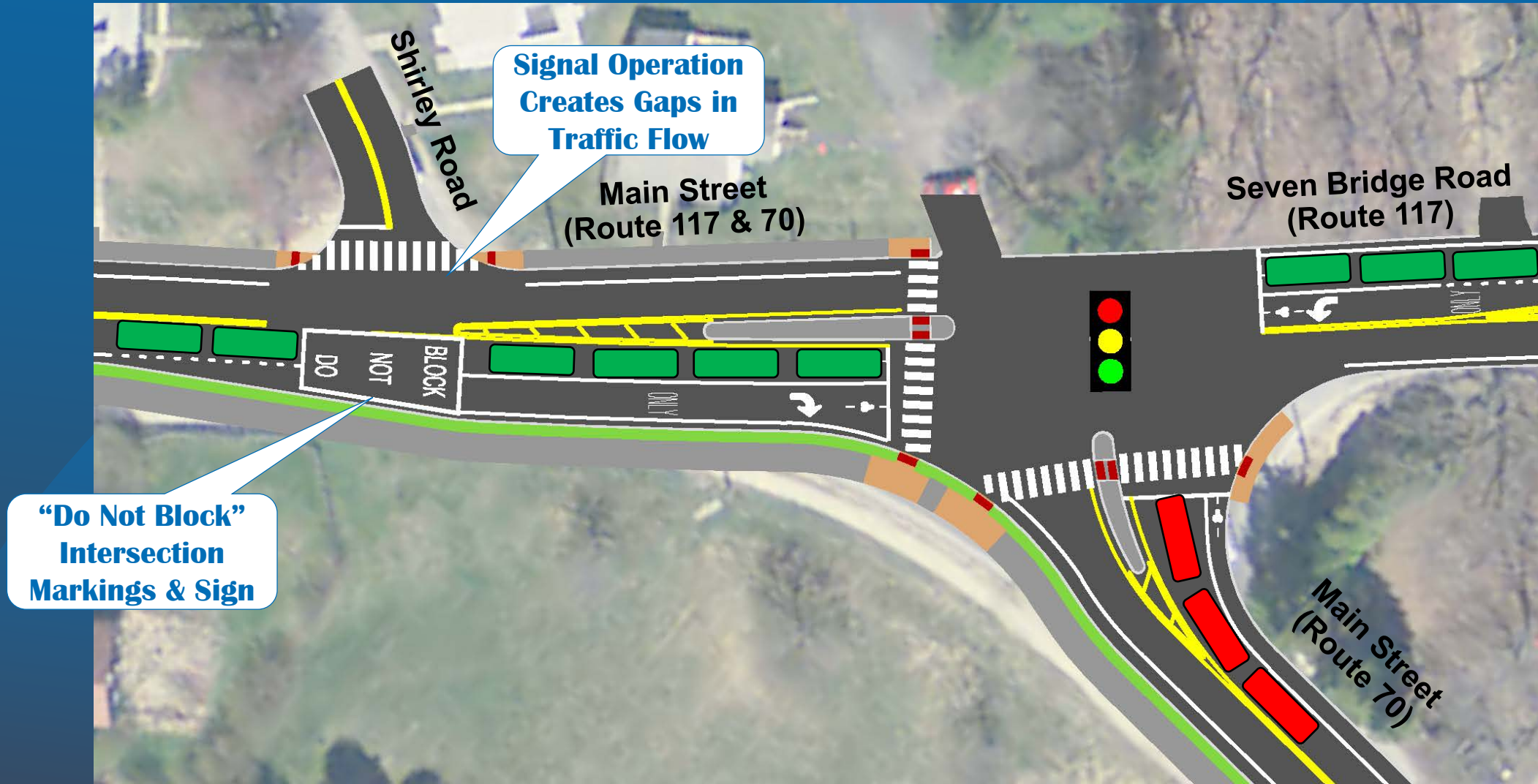


# Proposed Design Modifications Shirley Road Intersection

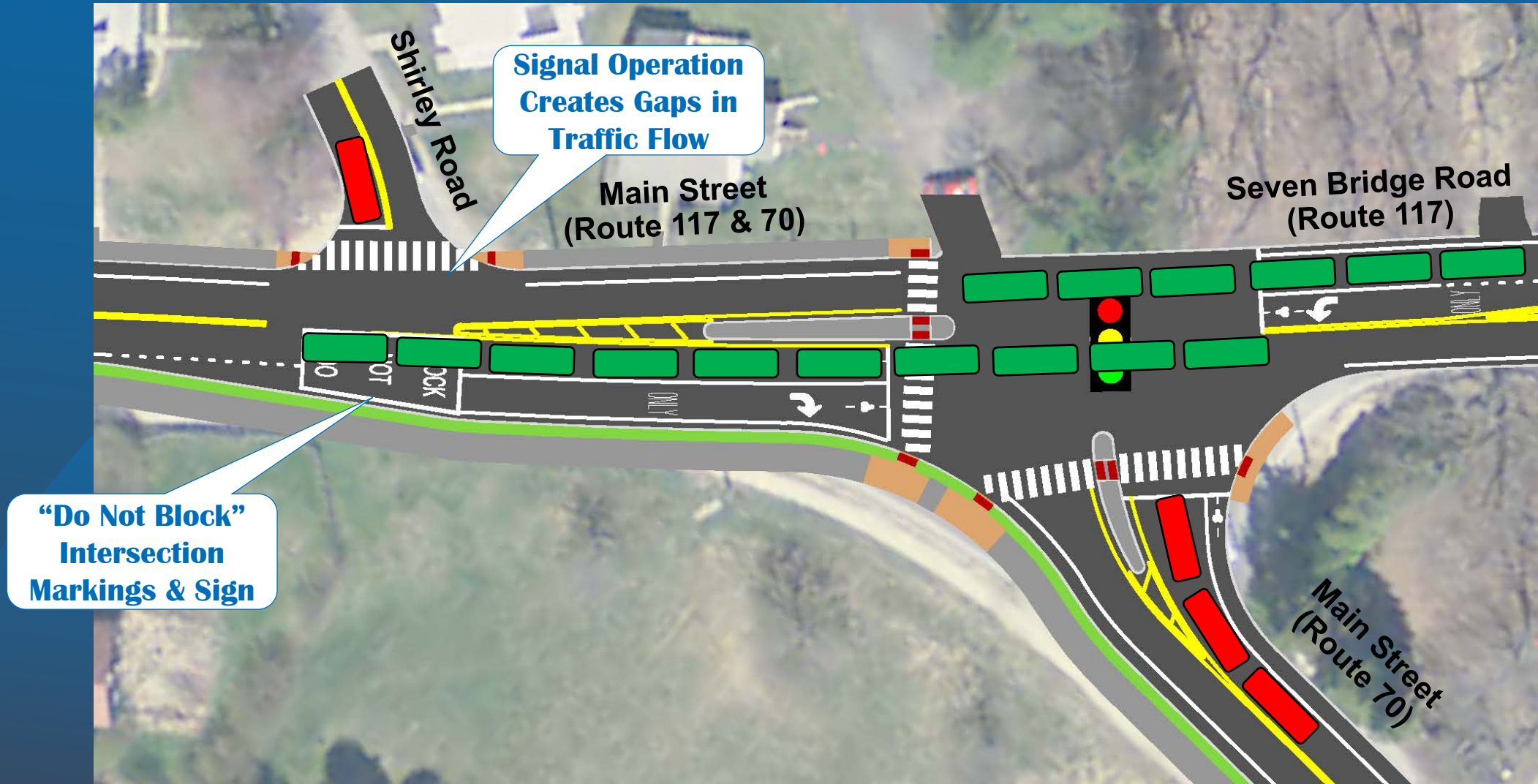




# Proposed Design Modifications Shirley Road Intersection

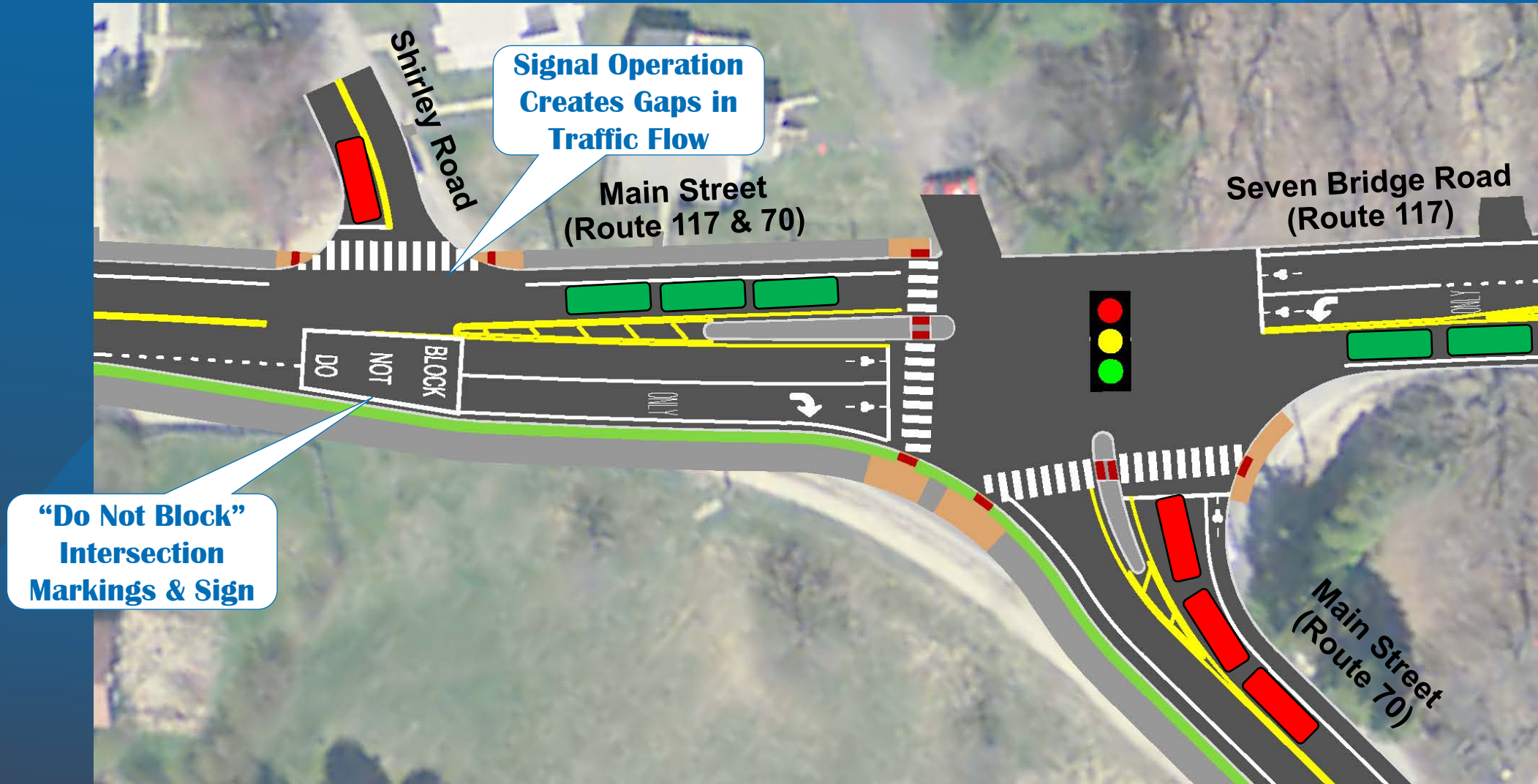


# Proposed Design Modifications Shirley Road Intersection





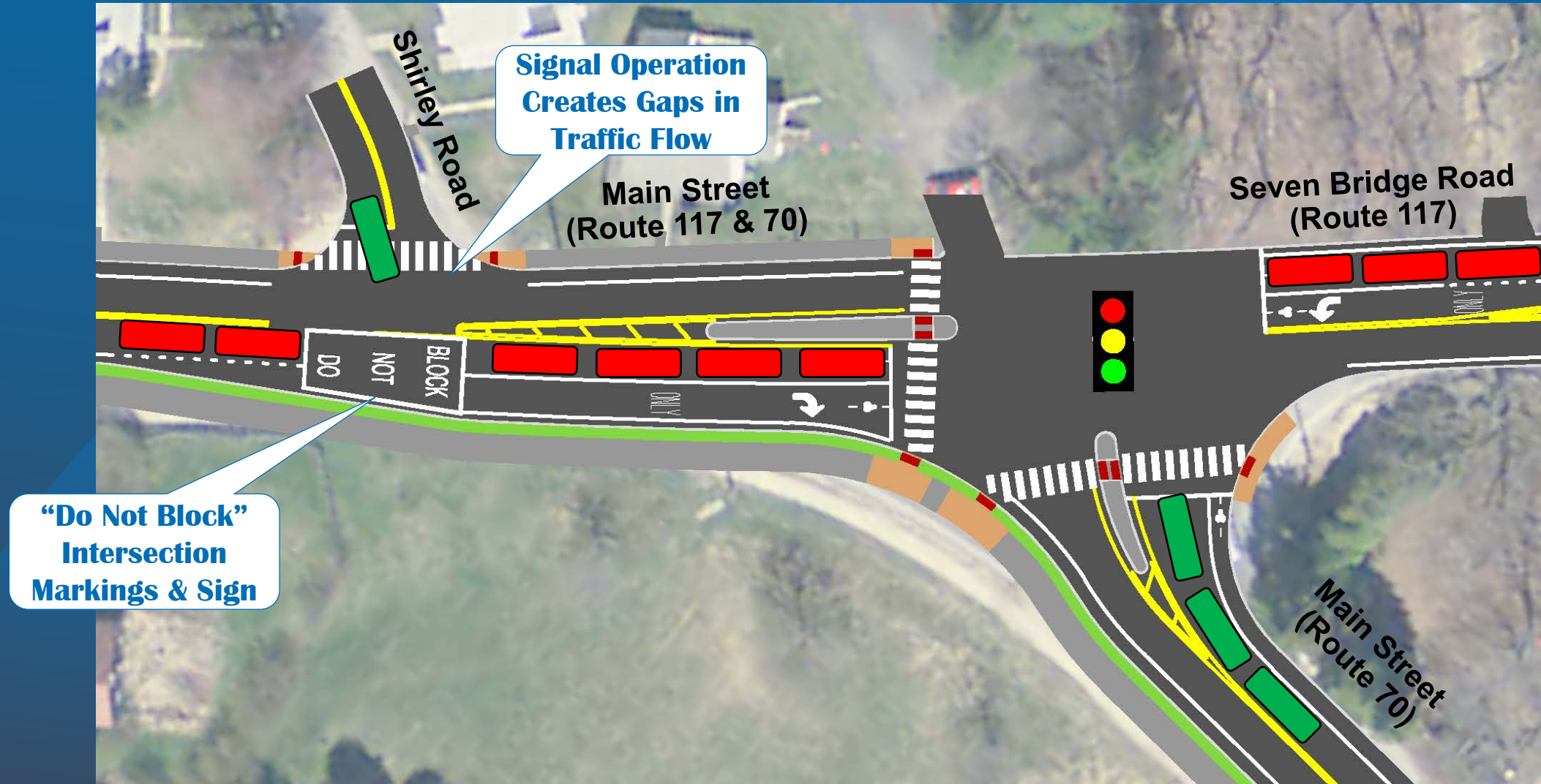
# Proposed Design Modifications Shirley Road Intersection



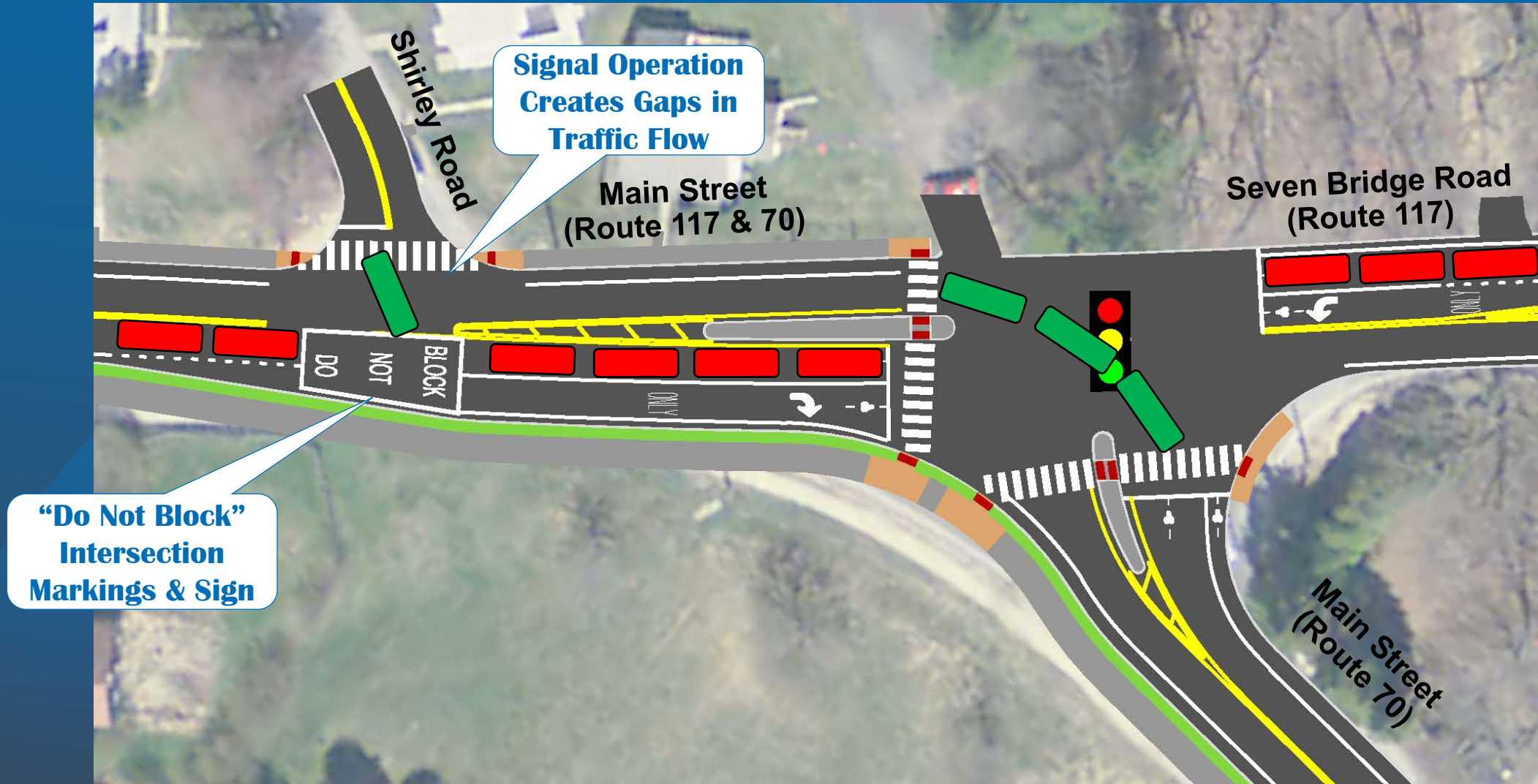




# Proposed Design Modifications Shirley Road Intersection

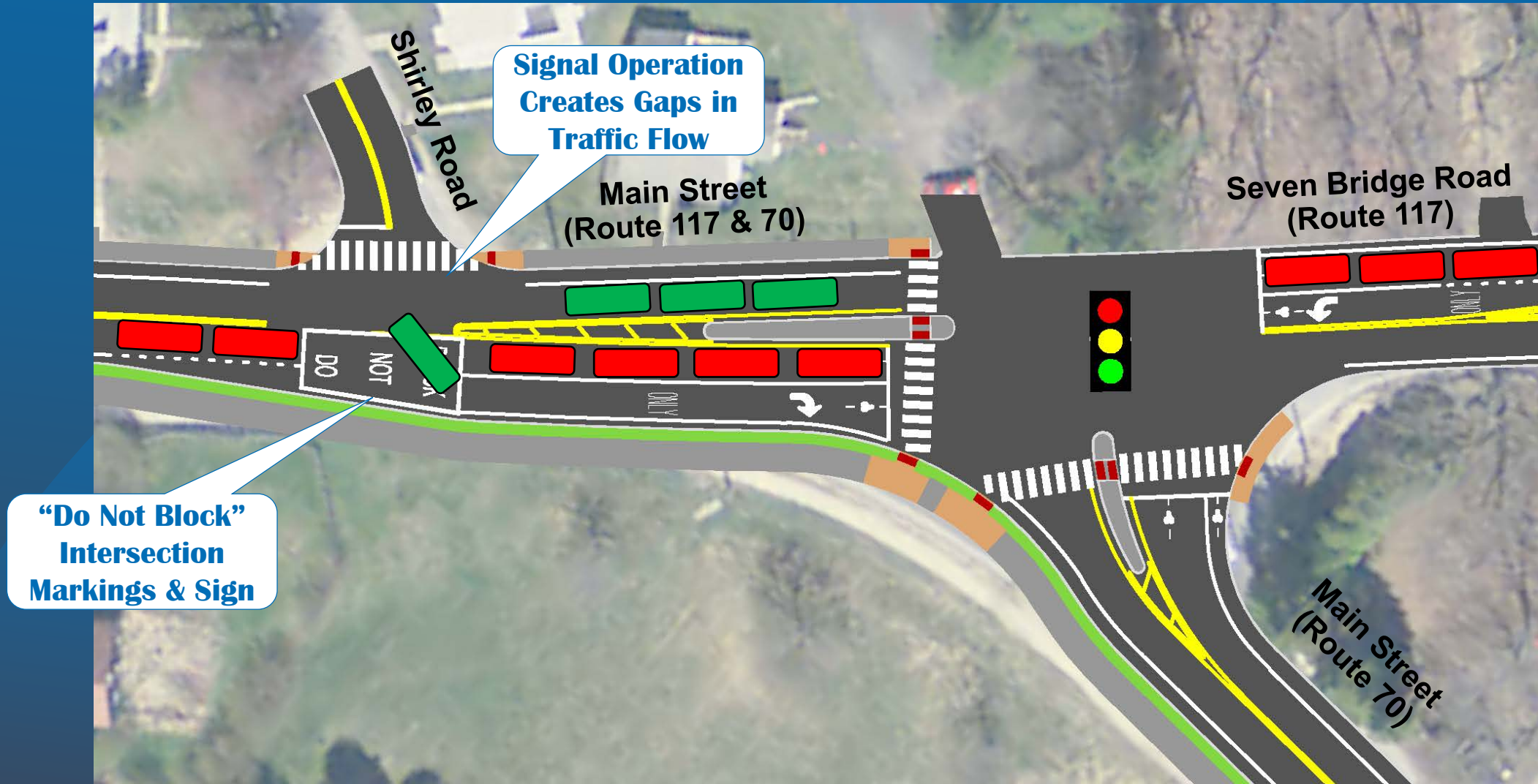


# Proposed Design Modifications Shirley Road Intersection

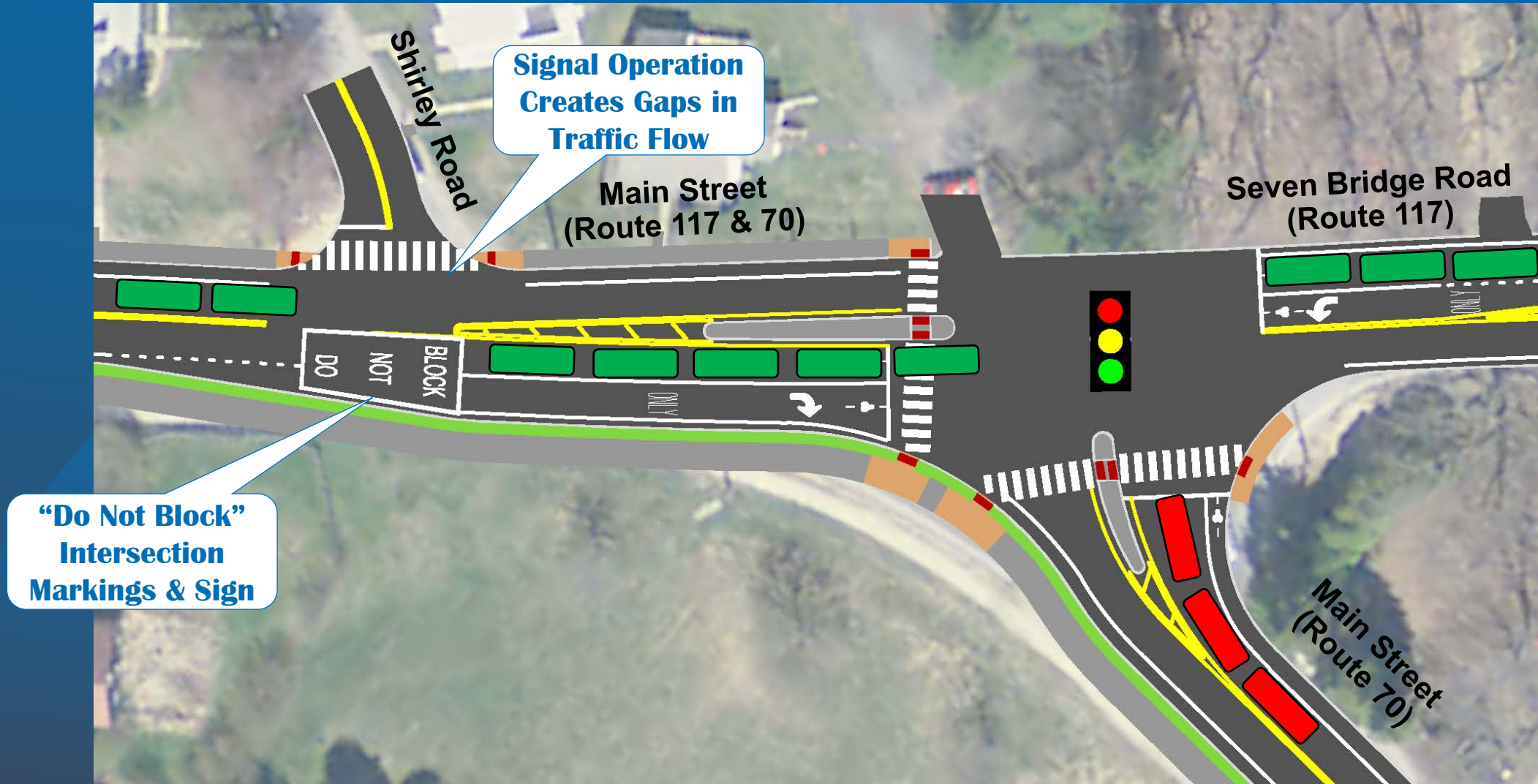




# Proposed Design Modifications Shirley Road Intersection

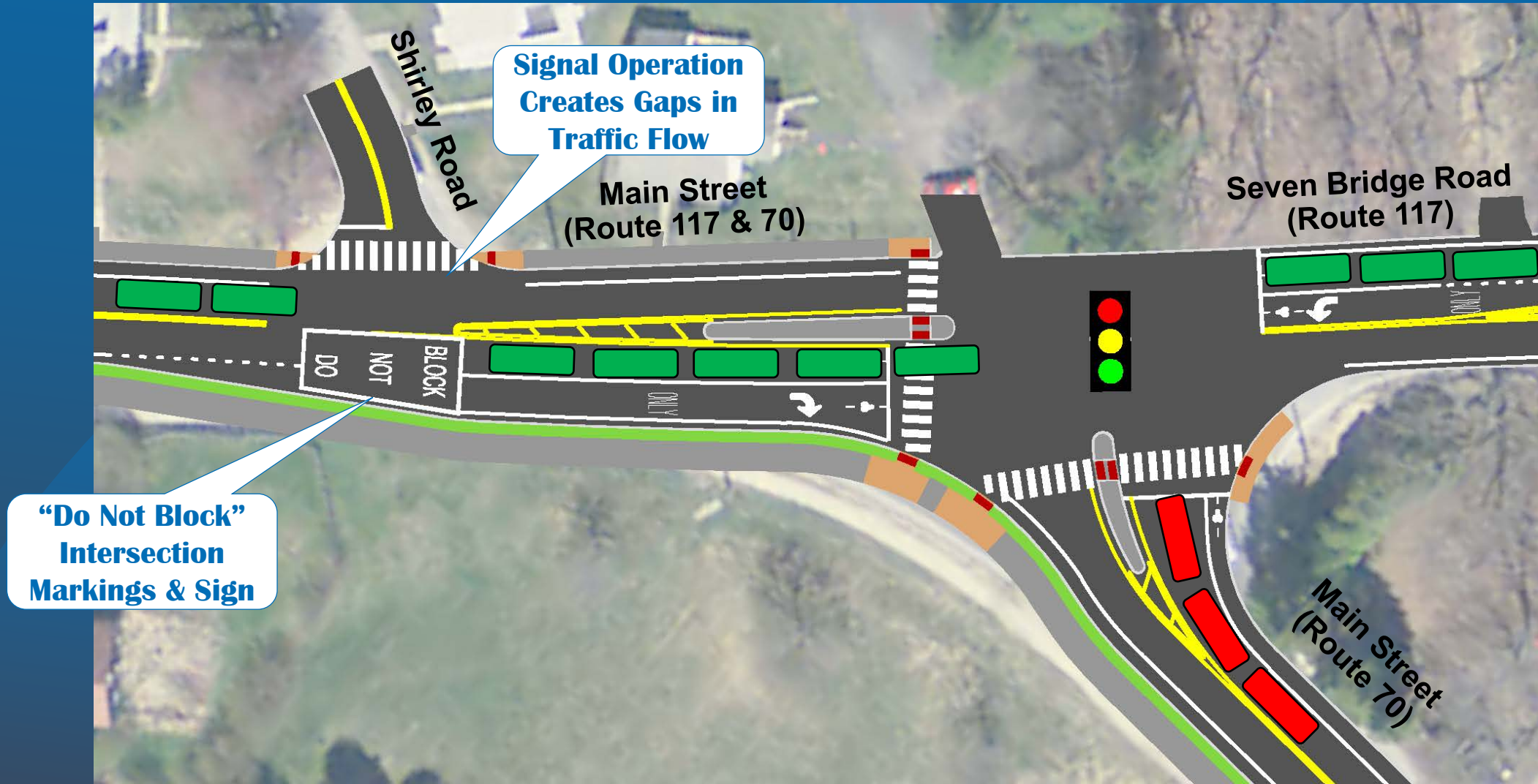


# Proposed Design Modifications Shirley Road Intersection



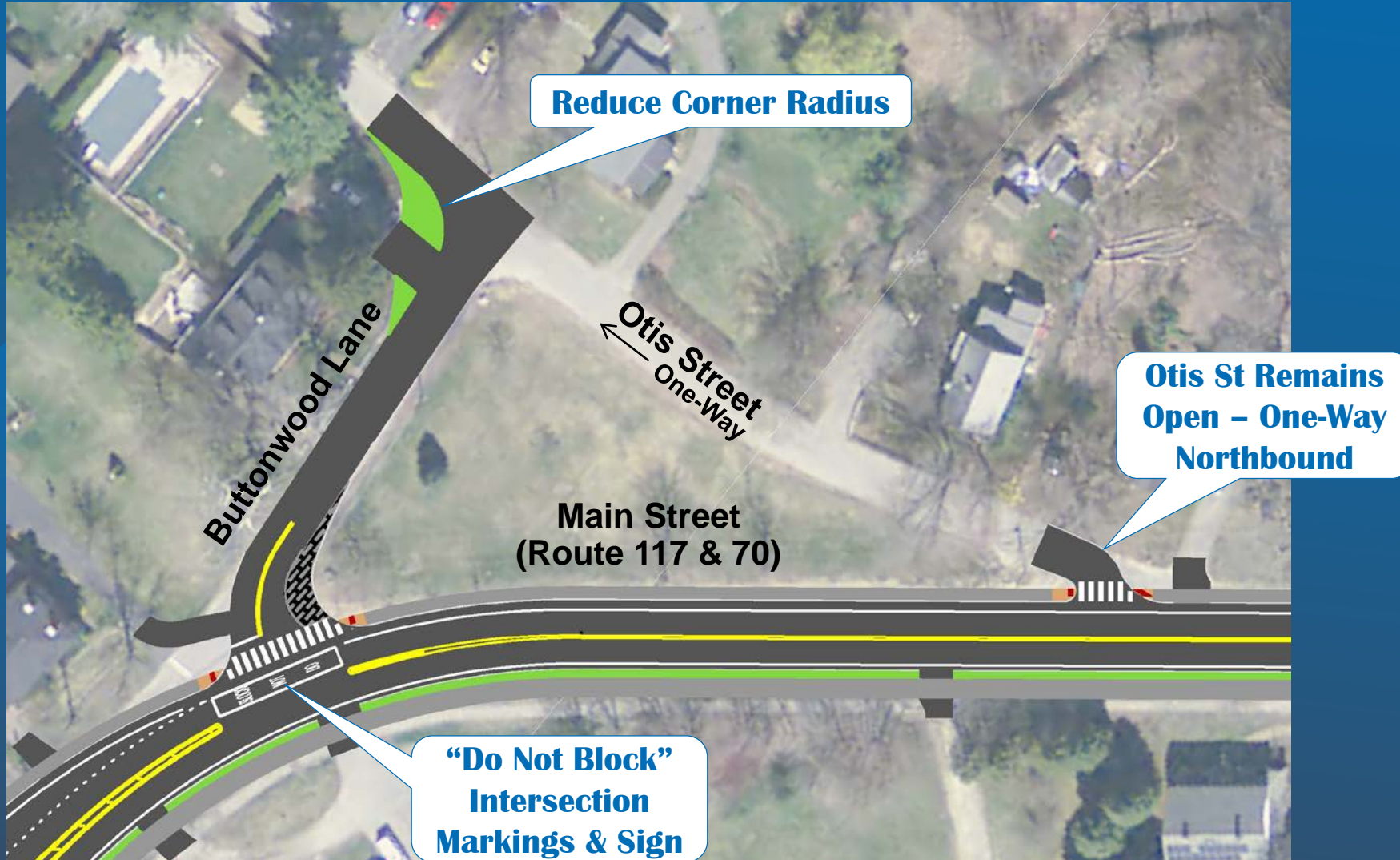


# Proposed Design Modifications Shirley Road Intersection





# Proposed Design Modifications Otis Street & Buttonwood Road



# Next Steps / Schedule

1. Advance to 75% design submission (February 2019)
2. Environmental Permitting (Spring 2019)
3. Town to meet with abutters to acquire easements (Summer 2019)
4. Complete Final PS&E design (Fall 2019)
5. Advertise for construction (Winter 2020)
6. Construction starts (Spring 2020)



## Contact Info:

Albert Miller  
MassDOT Project Manager  
albert.miller@dot.state.ma.us  
857.368.9341

Orlando Pacheco  
Lancaster Town Administrator  
opacheco@lancasterma.net  
774.450.5015

