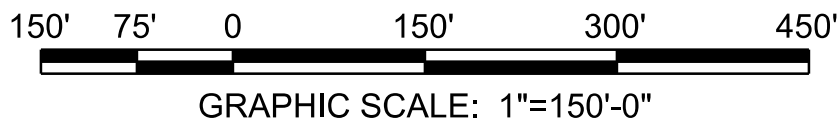
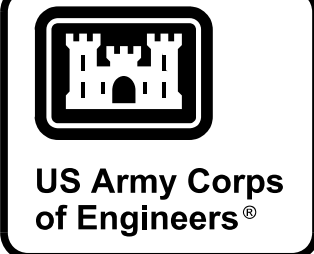
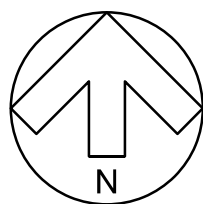


P:\Projects\0131403 CAD_BIM\Sheets\05_Civil\DMPO_CG701.dgn
28-FEB-2020
08:21



GEOGRAPHIC COORDINATE DATA
HORIZONTAL DATUM: NAD83
MASSACHUSETTS STATE PLANE MAINLINE.
VERTICAL DATUM: NAD83.
UNITS OF MEASURE: U.S. SURVEY FEET.
COORDINATES SHOWN IN FORMAT OF
EASTING, NORTHING AND ELEVATION.



MARK	DESCRIPTION	DATE

DESIGNED BY: S. CURRY	ISSUE DATE: MARCH 2020
DRAWN BY: S. CURRY	SOLICITATION NO.: SOLICITATION XXXX
CHECKED BY: M. MAYER	CONTRACT NO.: W912DY-15-D-0013
SUBMITTED BY: C. LOWE	CATEGORY CODE XXX-XX-XX
FILENAME: DMP0_CG701.dgn	

U.S. ARMY CORPS OF ENGINEERS
600 DR MARTIN LUTHER KING JR PL
LOUISVILLE DISTRICT
LOUISVILLE, KENTUCKY

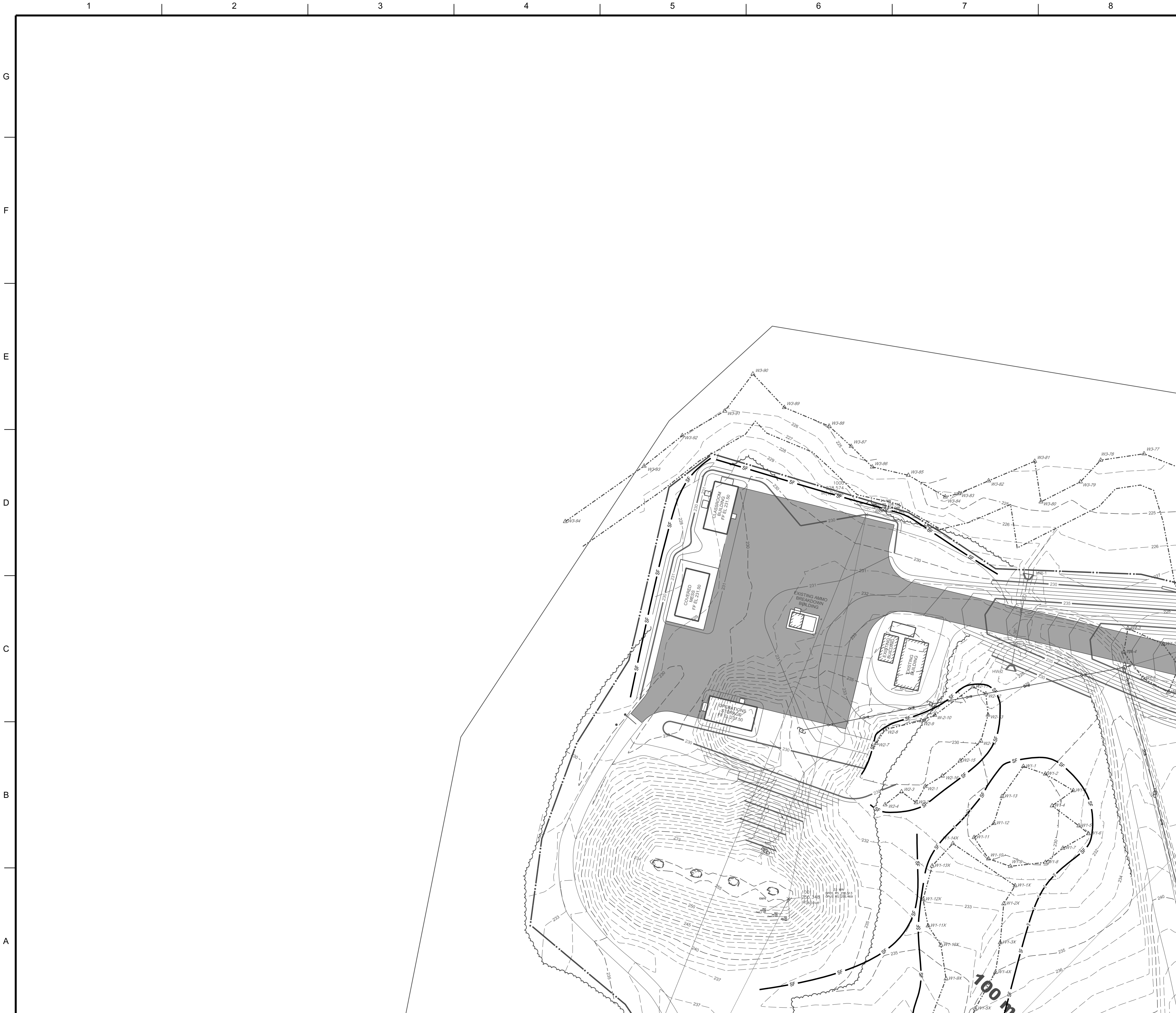
Mason & Hanger
A Day & Zimmermann Company

DEVENS, MASSACHUSETTS
AUTOMATED MULTIPURPOSE MACHINE GUN (MPMG) RANGE
FY21, PN: 088752
SITE

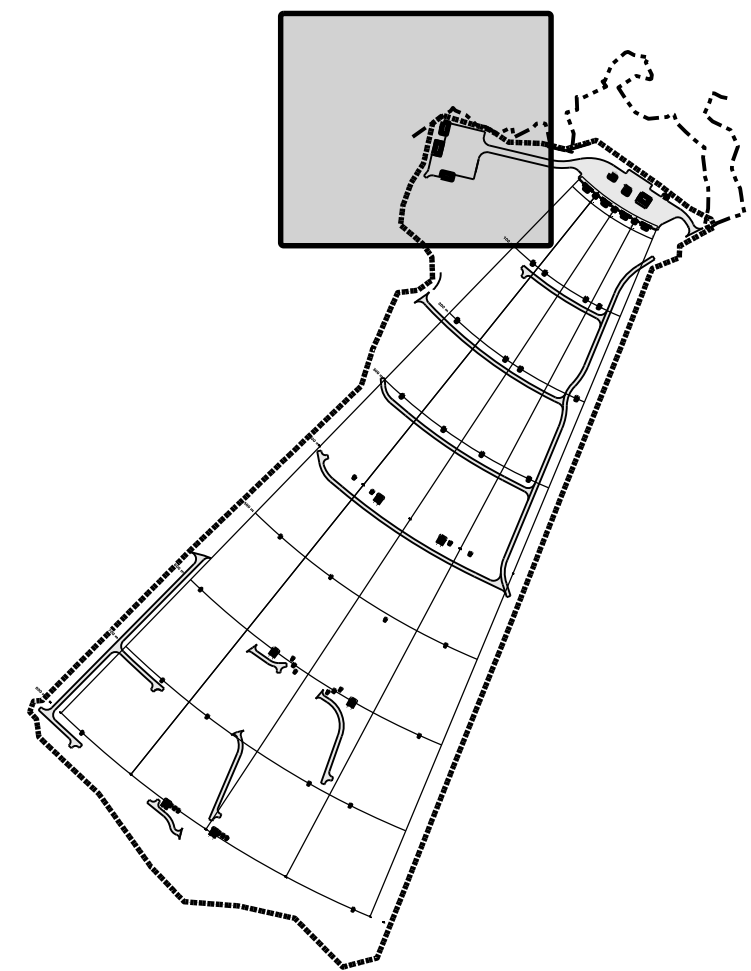
OVERALL SEDIMENT AND EROSION CONTROL

SHEET ID
CG701

P:\Projects\0131403 CAD_BIM\Sheets\05_Civil\DMP0_CG710.dgn
28-FEB-2020
08:21

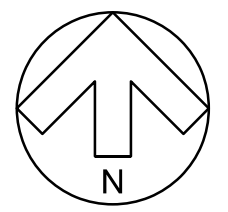
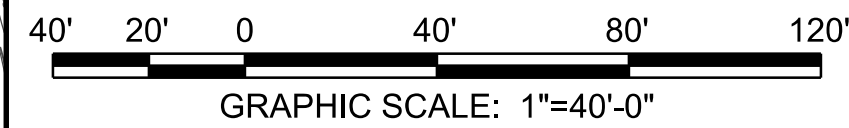


KEYMAP

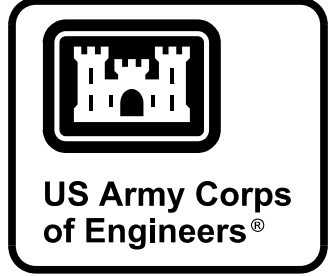


EROSION CONTROL LEGEND

- LIMIT OF CONSTRUCTION/CLEARING
LIMIT/LIMIT OF DISTURBANCE
- SF — SEDIMENT FENCE
REFER TO DETAIL 2, SHEET CG8XX
- TD — TEMPORARY DIVERSION, REFER TO SHEET CG8XX
- ◀ ROCK CHECK DAM
REFER TO DETAIL 1, SHEET CG8XX
- △ DC DUST CONTROL
- CONSTRUCTION ENTRANCE
REFER TO DETAIL 1, SHEET CG8XX
- TREE PROTECTION FENCE
REFER TO DETAIL 2, SHEET CG8XX
- TS TEMPORARY SEEDING
- SKIMMER SEDIMENT BASIN
REFER TO DETAIL 1, SHEET CG8XX
- RR RIPRAP OUTLET STABILIZATION
REFER TO DETAIL 1, SHEET CG8XX
- HARDWARE CLOTH AND GRAVEL INLET
PROTECTION. REFER TO DETAIL 1,
SHEET CG8XX
- RECP SOIL STABILIZATION MATTING
REFER TO SHEET CG806
- GL1 PERMANENT GRASS LINED CHANNEL.
REFER TO DETAIL 1, SHEET CG809
- SL1 RIP RAP LINED CHANNEL. REFER TO
DETAIL 1, SHEET CG809.
- CRS CONSTRUCTION ROAD STABILIZATION
- GROUND COVER FOR AREAS WITH 3:1
SLOPES OR STEEPER MUST BE PROVIDED
WITHIN 7 DAYS OF DISTURBANCE
- ROCK PIPE INLET PROTECTION. REFER
TO DETAIL 2, SHEET CG811.



GEOGRAPHIC COORDINATE DATA
HORIZONTAL DATUM: NAD83
MASSACHUSETTS STATE PLANE MAINLINE.
VERTICAL DATUM: NAD83.
UNITS OF MEASURE: U.S. SURVEY FEET.
COORDINATES SHOWN IN FORMAT OF
EASTING, NORTHING AND ELEVATION.



MARK	DESCRIPTION	DATE

DESIGNED BY: S. CURRY	ISSUE DATE: MARCH 2020	SOLUTION NO.: CG8XX	CONTRACT NO.: XXX-XX-XX	FILENAME: DMP0_CG710.dgn
DRAWN BY: M. MAYER	CHECKED BY: C. LOWE	CONTRACT NO.: XXX-XX-XX	CATEGORY CODE: XXX-XX-XX	ANSID:
U.S. ARMY CORPS OF ENGINEERS 600 DR MARTIN LUTHER KING JR PL LOUISVILLE DISTRICT LOUISVILLE, KENTUCKY				
Mason's Hammer A Division of Environmental Systems				

DEVENS, MASSACHUSETTS
AUTOMATED MULTIPURPOSE MACHINE GUN (MPMG) RANGE
FY21, PN: 088752
SITE

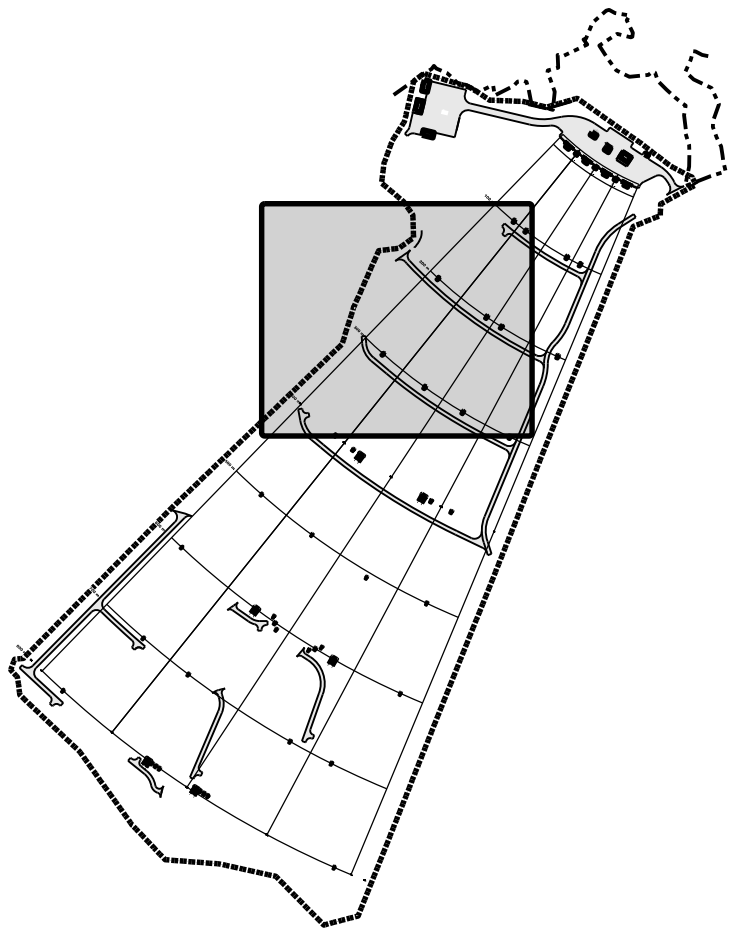
SEDIMENT AND EROSION CONTROL

SHEET ID
CG710

P:\Projects\0131403 CAD_BIM\Sheets\05_Civil\DMPO_CG712.dgn
28-FEB-2020
08:21

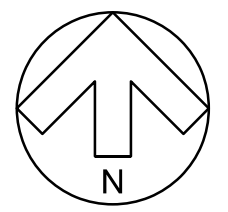
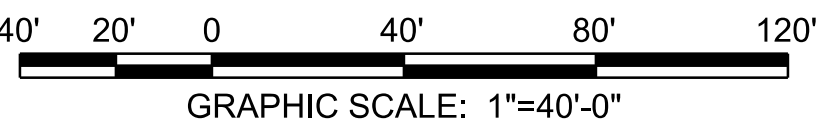


KEYMAP

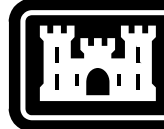


EROSION CONTROL LEGEND

- LIMIT OF CONSTRUCTION/CLEARING
LIMIT/LIMIT OF DISTURBANCE
- SF — SEDIMENT FENCE
REFER TO DETAIL 2, SHEET CG8XX
- TD — TEMPORARY DIVERSION, REFER TO SHEET CG8XX
- ← ROCK CHECK DAM
REFER TO DETAIL 1, SHEET CG8XX
- △ DC DUST CONTROL
- CONSTRUCTION ENTRANCE
REFER TO DETAIL 1, SHEET CG8XX
- TREE PROTECTION FENCE
REFER TO DETAIL 2, SHEET CG8XX
- TS TEMPORARY SEEDING
- SKIMMER SEDIMENT BASIN
REFER TO DETAIL 1, SHEET CG8XX
- RR RIPRAP OUTLET STABILIZATION
REFER TO DETAIL 1, SHEET CG8XX
- HARDWARE CLOTH AND GRAVEL INLET
PROTECTION. REFER TO DETAIL 1,
SHEET CG8XX
- RECP SOIL STABILIZATION MATTING
REFER TO SHEET CG806
- GL1 PERMANENT GRASS LINED CHANNEL.
REFER TO DETAIL 1, SHEET CG809
- SL1 RIP RAP LINED CHANNEL. REFER TO
DETAIL 1, SHEET CG809.
- CRS CONSTRUCTION ROAD STABILIZATION
- GROUNDCOVER FOR AREAS WITH 3:1
SLOPES OR STEEPER MUST BE PROVIDED
WITHIN 7 DAYS OF DISTURBANCE
- ROCK PIPE INLET PROTECTION. REFER
TO DETAIL 2, SHEET CG811.



GEOGRAPHIC COORDINATE DATA
HORIZONTAL DATUM: NAD83
MASSACHUSETTS STATE PLANE MAINLINE.
VERTICAL DATUM: NAD83.
UNITS OF MEASURE: U.S. SURVEY FEET.
COORDINATES SHOWN IN FORMAT OF
EASTING, NORTHING AND ELEVATION.



US Army Corps
of Engineers®

MARK	DESCRIPTION	DATE

DESIGNED BY: S. CURRY	ISSUE DATE: MARCH 2020	SOLUTION NO.: CG8000	CONTRACT NO.: W912DY-15-D-0013	CATEGORY CODE: XXX-XX-XX	FILENAME: DMP0_CG712.dgn
DRAWN BY: M. MAYER	CHECKED BY: C. LOWE	SUBMITTED BY: C. LOWE	SIZE: ANSI D	U.S. ARMY CORPS OF ENGINEERS 600 DR MARTIN LUTHER KING JR PL LOUISVILLE DISTRICT LOUISVILLE, KENTUCKY	Mason's Hammer A Division of Jacobs Engineering Group

DEVENS, MASSACHUSETTS
AUTOMATED MULTIPURPOSE MACHINE GUN (MPMG) RANGE
FY21, PN: 088752
SITE

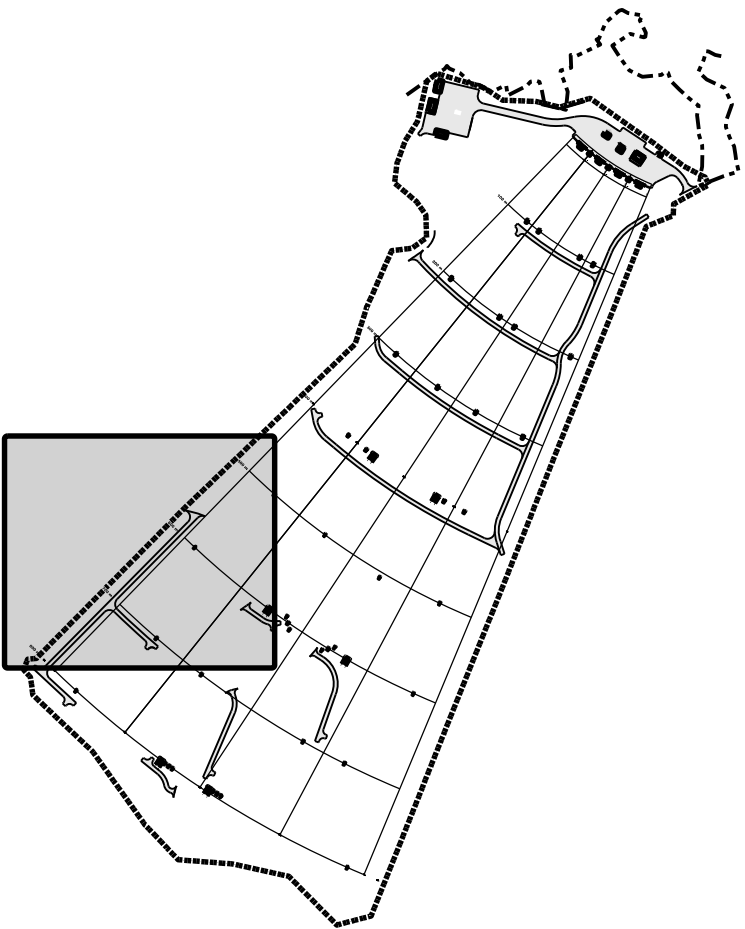
SEDIMENT AND EROSION CONTROL

SHEET ID
CG712

P:\Projects\0131403 CAD_BIM\Sheets\05_Civil\DMP0_CG714.dgn
28-FEB-2020
08:21



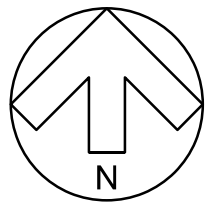
KEYMAP



EROSION CONTROL LEGEND

- LIMIT OF CONSTRUCTION/CLEARING
LIMIT/LIMIT OF DISTURBANCE
- SF — SEDIMENT FENCE
REFER TO DETAIL 2, SHEET CG8XX
- TD — TEMPORARY DIVERSION, REFER TO SHEET CG8XX
- ← ROCK CHECK DAM
REFER TO DETAIL 1, SHEET CG8XX
- △ DC DUST CONTROL
- CONSTRUCTION ENTRANCE
REFER TO DETAIL 1, SHEET CG8XX
- TREE PROTECTION FENCE
REFER TO DETAIL 2, SHEET CG8XX
- TS TEMPORARY SEEDING
- SKIMMER SEDIMENT BASIN
REFER TO DETAIL 1, SHEET CG8XX
- RR RIPRAP OUTLET STABILIZATION
REFER TO DETAIL 1, SHEET CG8XX
- HARDWARE CLOTH AND GRAVEL INLET
PROTECTION. REFER TO DETAIL 1,
SHEET CG8XX
- RECP SOIL STABILIZATION MATTING
REFER TO SHEET CG806
- GL1 PERMANENT GRASS LINED CHANNEL.
REFER TO DETAIL 1, SHEET CG809
- SL1 RIP RAP LINED CHANNEL. REFER TO
DETAIL 1, SHEET CG809.
- CRS CONSTRUCTION ROAD STABILIZATION
- GROUND COVER FOR AREAS WITH 3:1
SLOPES OR STEEPER MUST BE PROVIDED
WITHIN 7 DAYS OF DISTURBANCE
- ROCK PIPE INLET PROTECTION. REFER
TO DETAIL 2, SHEET CG811.

40' 20' 0 40' 80' 120'
GRAPHIC SCALE: 1"=40'-0"



GEOGRAPHIC COORDINATE DATA
HORIZONTAL DATUM: NAD83
MASSACHUSETTS STATE PLANE MAINLINE.
VERTICAL DATUM: NAD83.
UNITS OF MEASURE: U.S. SURVEY FEET.
COORDINATES SHOWN IN FORMAT OF
EASTING, NORTHING AND ELEVATION.



US Army Corps
of Engineers®

MARK	DESCRIPTION	DATE

DESIGNED BY: S. CURRY	ISSUE DATE: MARCH 2020	SOLUTION NO.: CG8XX	CONTRACT NO.: XXX-XX-XX	FILENAME: DMP0_CG714.dgn
DRAWN BY: J. LUTHER KING JR PL	CHECKED BY: M. MAYER	SUBMITTED BY: C. LOWE	SIZE: ANSI D	
LOUISVILLE DISTRICT LOUISVILLE, KENTUCKY				

DEVENS, MASSACHUSETTS
AUTOMATED MULTIPURPOSE MACHINE GUN (MPMG) RANGE
FY21, PN: 088752
SITE

SEDIMENT AND EROSION CONTROL

SHEET ID
CG714

G

F

E

D

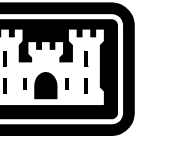
C

B

A

SEDIMENT AND EROSION CONTROL NOTES

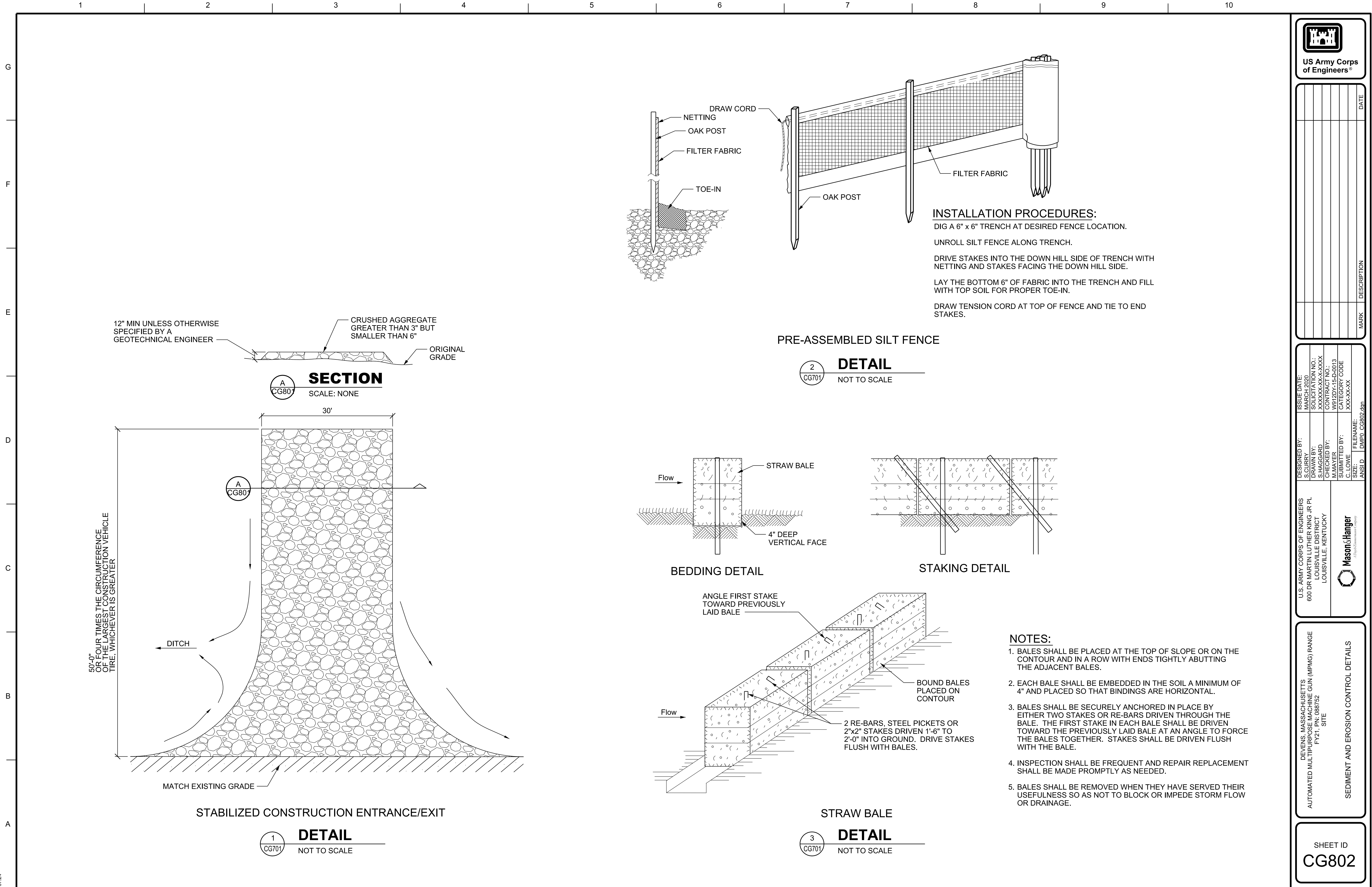
1. THIS STORM WATER POLLUTION PREVENTION PLAN (SWPPP) WAS DEVELOPED AT THE REQUEST OF THE GOVERNMENT. THIS PLAN IDENTIFIES POTENTIAL SOURCES OF POLLUTANTS OF STORM WATER, PRESENTS POLLUTION CONTROL MEASURES, AND ASSISTS IN INSURING IMPLEMENTATION AND MAINTENANCE OF THE BEST MANAGEMENT PRACTICES (BMP'S) INDICATED HEREIN.
2. THIS SWPPP DOES NOT IDENTIFY NON-STORMWATER POLLUTANTS, AS THE EXTENT OF POTENTIAL POLLUTANTS THE CONTRACTOR MAY CREATE IS UNDETERMINED AT THIS TIME. IT IS REQUIRED THAT THE CONTRACTOR READ, UNDERSTAND AND MAINTAIN A COPY OF EITHER THE MASSACHUSETTS STORMWATER BMP HANDBOOK OR THE FIELD MANUAL OF THE MASSACHUSETTS STORMWATER BMP HANDBOOK ON SITE AT ALL TIMES.
3. ALL SUBCONTRACTORS ARE REQUIRED TO BE INFORMED THAT THE JOB SITE IS SUBJECT TO THE REQUIREMENTS OF THIS SWPPP AND ADEQUATELY TRAINED IN THE REQUIREMENTS OF THE SWPPP.
4. PRIOR TO THE INITIATION OF GRADING OPERATIONS, A NOTICE OF INTENT IS TO BE FILED WITH THE STATE OF MASSACHUSETTS WATER RESOURCES CONTROL BOARD SO THAT THIS CONSTRUCTION PROJECT MAY BE COVERED UNDER THE STATE GENERAL PERMIT. THE PERMIT IS A NATIONAL POLLUTION DISCHARGE ELIMINATION SYSTEM (NPDES) GENERAL PERMIT FOR STORM WATER DISCHARGES ASSOCIATED WITH CONSTRUCTION ACTIVITY.
5. IN THE EVENT OF A CHANGE IN OWNERSHIP, A NEW NOTICE OF INTENT SHALL BE FILED WITH THE STATE WATER RESOURCES CONTROL BOARD.
6. THE SWPPP IS REQUIRED TO BE RE-CERTIFIED NOT LATER THAN ONE CALENDAR YEAR FROM FILING THE NOTICE OF INTENT EVERY YEAR UNTIL A NOTICE OF TERMINATION HAS BEEN FILED.
7. THE REGIONAL WATER QUALITY CONTROL BOARD REQUIRES PHOTOGRAPHIC EVIDENCE IN CONJUNCTION WITH THE NOTICE OF TERMINATION ILLUSTRATING THAT THE SITE HAS BEEN PERMANENTLY SECURED FROM EROSION AND NON-STORMWATER POLLUTANTS ONCE CONSTRUCTION IS COMPLETE.
8. IN THE EVENT OF A RELEASE OF A REPORTABLE QUANTITY OF A POLLUTANT, THE CONTRACTOR SHALL ADVISE THE OWNER TO NOTIFY THE REGIONAL WATER QUALITY CONTROL BOARD.
9. CHANGES IN CONSTRUCTION OR IN CONDITIONS WHICH ARE NOT COVERED BY THIS PLAN SHOULD BE BROUGHT TO THE ATTENTION OF THE DESIGNER. IF NECESSARY, THIS POLLUTION PREVENTION PLAN WILL BE REVISED TO REFLECT THE CHANGE IN CONSTRUCTION OR IN CONDITIONS.
10. ALL PREVENTION AND CLEAN UP MEASURES SHOULD BE CONDUCTED IN ACCORDANCE WITH STATE AND FEDERAL REGULATIONS. WASTE MATERIALS SHOULD BE DISPOSED OF IN A LEGAL MANNER. ALL DISCHARGERS OF STORM WATER MUST COMPLY WITH THE LAWFUL REQUIREMENTS OF THE REGIONAL WATER QUALITY CONTROL BOARD AND OTHER LOCAL AGENCIES REGARDING THE DISCHARGES OF STORM WATER TO STORM DRAINS.
11. THIS PLAN DOES NOT COVER THE REMOVAL OF HAZARDOUS OR TOXIC WASTE. IN THE EVENT OF A DISCHARGE OR RELEASE OF A REPORTABLE QUANTITY OF TOXIC WASTE, WORK SHOULD BE STOPPED UNTIL THE SPILL CAN BE ASSESSED AND A MITIGATION REPORT PREPARED BY A QUALIFIED ENVIRONMENTAL CONSULTANT, AND IF NECESSARY, REVIEWED BY THE COUNTY OF SAN LUIS OBISPO AND ANY OTHER AGENCY HAVING JURISDICTION.
12. DURING CONSTRUCTION, THE CONTRACTOR MUST DIRECT ALL RUNOFF TO NON-ERODIBLE LOCATIONS.
13. A STANDBY CREW FOR EMERGENCY WORK SHALL BE AVAILABLE AT ALL TIMES DURING THE RAINY SEASON (OCTOBER 15 THROUGH APRIL 15). NECESSARY MATERIALS SHALL BE AVAILABLE AND STOCKPILED AT CONVENIENT LOCATIONS TO FACILITATE RAPID CONSTRUCTION OF TEMPORARY DEVICES WHEN RAIN IS IMMINENT.
14. THE CONTRACTOR SHALL CONSTRUCT TEMPORARY EROSION CONTROL MEASURES AS SHOWN ON THIS PLAN AND/OR AS DIRECTED BY THE ENGINEER TO CONTROL DRAINAGE WHICH HAS BEEN AFFECTED BY GRADING AND/OR TRENCHING OPERATIONS.
15. AFTER A RAINSTORM, ALL SILT AND DEBRIS SHALL BE REMOVED FROM CHECK DAMS.
16. THE EROSION CONTROL DEVICES ON THIS PLAN ARE A GENERAL CONCEPT OF WHAT MAY BE REQUIRED. EROSION CONTROL DEVICES MAY BE RELOCATED, DELETED OR ADDITIONAL ITEMS MAY BE REQUIRED DEPENDING ON THE ACTUAL SOIL CONDITIONS ENCOUNTERED. CHANGES TO THE EROSION CONTROL PLAN WILL RESULT IN CHANGING OF THE SWPPP.
17. THE CONTRACTOR IS RESPONSIBLE TO KEEP IN FORCE ALL EROSION CONTROL DEVICES AND TO MODIFY THOSE DEVICES AS SITE PROGRESS DICTATES.
18. SILT FENCE SHALL BE INSTALLED AS INDICATED PER MANUFACTURER'S RECOMMENDATIONS.

[illegible][illegible]

DEVENS, MASSACHUSETTS
AUTOMATED MULTIPURPOSE MACHINE GUN (MPMG) RANGE
FY21, PN: 088752
SITE

SHEET ID
CG801

P:\Projects\01531403 CAD_BIM\Sheets\05_Civil\DMPO_CG802.dgn
28-FEB-2020
07:24

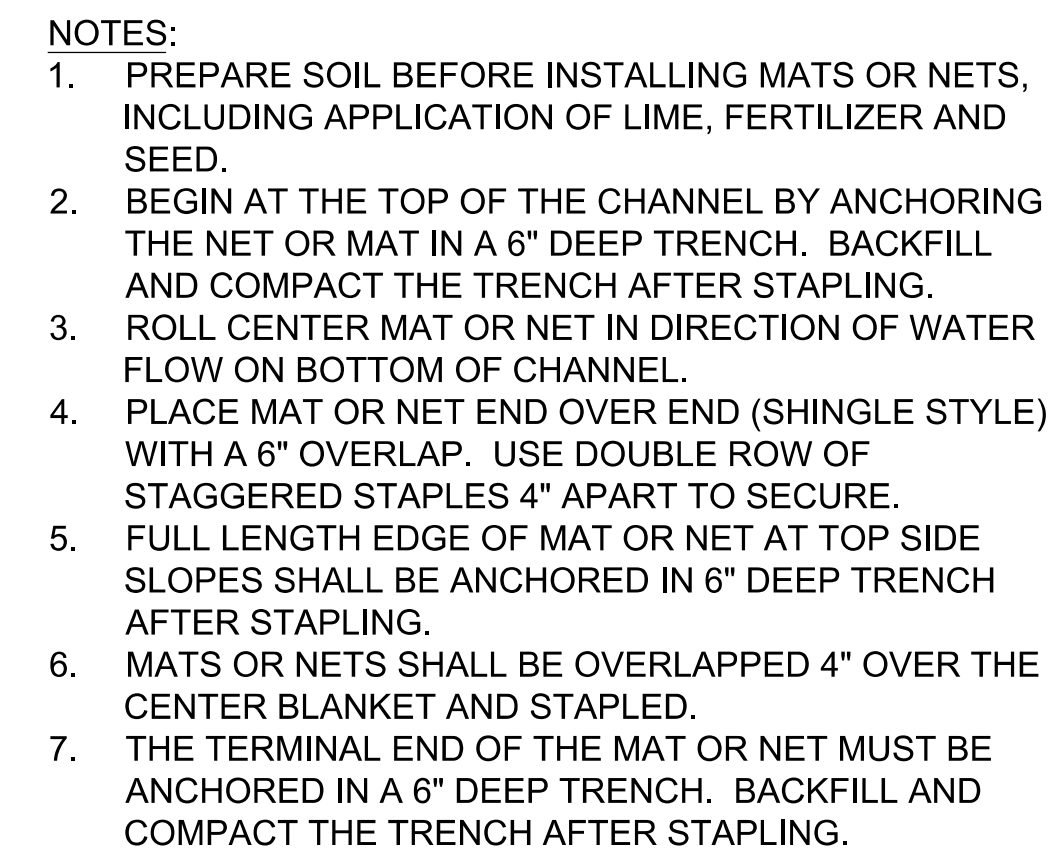




S.CURRY	MARCH 2020
DRAWN BY: S.HAGGARD	SOLICITATION NO.: XXXXXX-XX-X-XXXX
CHECKED BY: M.MAYER	CONTRACT NO.: W912DY-15-D-0013
SUBMITTED BY: C. LOWE	CATEGORY CODE XXX-XX-XX
SIZE:	FILENAME:
ANSI D	DMP0 CG803.dgn

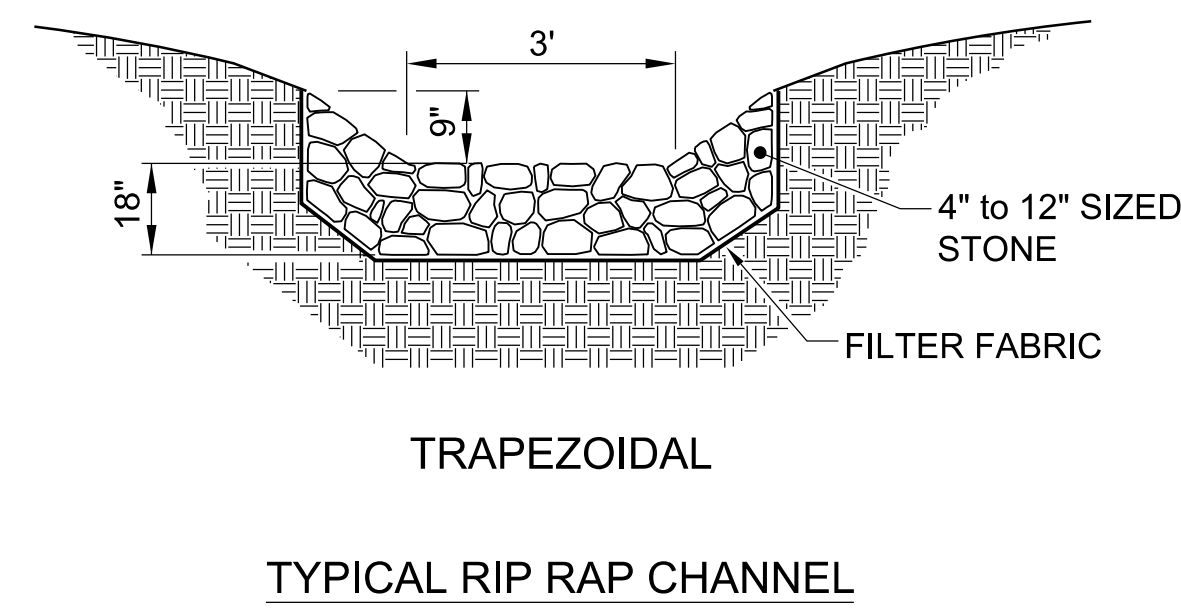
DEVENTS, MASSACHUSETTS
AUTOMATED MULTIPURPOSE MACHINE GUN (MPMG) RANGE
FY21, PN: 088752
SITE

SHEET ID
CG803



CHANNEL DETAIL

DETAIL
NOT TO SCALE



[illegible]

ISSUE DATE:	MARCH 2020
SIGNATURE:	S. CURRY
DESIGNED BY:	S. CURRY
DRAWN BY:	S. HAGGARD
CHECKED BY:	M. MAYER
SUBMITTED BY:	C. LOWE
FILENAME:	DMP0_CG804.dgn

U.S. ARMY CORPS OF ENGINEERS
600 DR MARTIN LUTHER KING JR PL
LOUISVILLE DISTRICT
LOUISVILLE, KENTUCKY



DEVENS, MASSACHUSETTS
AUTOMATED MULTIPURPOSE MACHINE GUN (MPMG) RANGE
FY21, PN: 088752
SITE

SEDIMENT AND EROSION CONTROL DETAILS

SHEET ID

CG804