

P:\Projects\0131403 CAD_BIM\Sheets\05_Civil\DMPO_C-101.dgn
28-FEB-2020
07:16



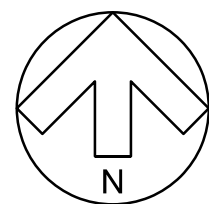
GENERAL SHEET NOTES

1. AN UNEXPLODED ORDNANCE (UXO) SURVEY WAS PERFORMED AT THE SITE AND PORTIONS OF THE CONSTRUCTION FOOTPRINT WERE ASSESSED AS HAVING A [MEDIUM, HIGH] RISK FOR FINDING UXO. [OTHER AREAS WERE ASSESSED TO HAVE A LOW RISK OF FINDING UXO]. A UXO REMOVAL (CLEARANCE) WILL BE PERFORMED AT THE SITE IN THE MEDIUM/HIGH RISK CONSTRUCTION FOOTPRINT AREAS PRIOR TO CONSTRUCTION; HOWEVER, THE COMPLETION OF THESE CLEARANCES DOES NOT COMPLETELY ELIMINATE THE POSSIBILITY OF ENCOUNTERING UXO IN THOSE AREAS. [UXO CLEARANCES WILL NOT BE PERFORMED IN THE LOW RISK AREAS, AND SIMILARLY, WHILE DEEMED UNLIKELY, THE POSSIBILITY OF ENCOUNTERING UXO IN A LOW RISK DOES EXIST.]
2. A BOUNDARY SURVEY WILL BE PROVIDED TO THE CONSTRUCTION CONTRACTOR THAT DEPICTS THE LIMITS OF THE AREAS CLEARED AND THE DEPTH TO WHICH THE AREAS WERE CLEARED.
3. WORK ONLY WITHIN THE CLEARANCE LIMITS AND AREAS INITIALLY CHARACTERIZED AS LOW RISK UNLESS ESCORTED BY CONSTRUCTION SUPPORT PERSONNEL.
4. AT THE COMMENCEMENT OF INTRUSIVE (GROUND DISTURBING) CONSTRUCTION ACTIVITIES THE [MEDIUM, HIGH] RISK AREAS WHICH WERE PREVIOUSLY CLEARED WILL RECEIVE CONSTRUCTION SUPPORT BY [GOVERNMENT UXO CONTRACTOR PERSONNEL, INSTALLATION EOD PERSONNEL]. [AREAS WHICH WERE INITIALLY ASSESSED TO BE LOW RISK WILL ALSO RECEIVE CONSTRUCTION SUPPORT.]
5. SPECIFICALLY "ON-CALL" CONSTRUCTION SUPPORT IN ACCORDANCE WITH DODM 6055.09-M-V7 AND EM385-1-97, CHANGE 1, WILL BE PROVIDED. [GOVERNMENT UXO CONSTRUCTION SUPPORT PERSONNEL WILL BE AT THE PROJECT SITE] [INSTALLATION EOD PERSONNEL WILL BE ON-CALL] AND WILL INVESTIGATE ANY POTENTIAL UXO FINDINGS DURING INTRUSIVE CONSTRUCTION ACTIVITIES.
6. IN THE EVENT THAT AN OBJECT RESEMBLING MILITARY MUNITIONS IS DISCOVERED DURING CONSTRUCTION ACTIVITIES, STOP WORK IN THE IMMEDIATE VICINITY OF THE DISCOVERY AND CONTACT THE CONTRACTING OFFICER AND [GOVERNMENT UXO CONSTRUCTION SUPPORT PERSONNEL] [INSTALLATION EOD PERSONNEL] TO INVESTIGATE THE ITEM. SHOULD A SUSPECT DISCOVERY BE CONFIRMED TO CONTAIN AN EXPLOSIVE HAZARD, THE ITEM WILL BE REMOVED OR DESTROYED, DURING WHICH TIME CONSTRUCTION CONTRACTOR PERSONNEL WILL BE REQUIRED TO MAINTAIN A SAFE DISTANCE FROM THE ITEM AS SPECIFIED BY THE [GOVERNMENT UXO CONSTRUCTION SUPPORT PERSONNEL] [INSTALLATION EOD PERSONNEL].

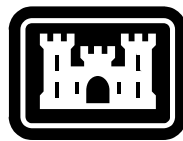
LEGEND

- UXO - SURFACE CLEARED - CONTRACTOR MAY DRIVE OR WALK IN THESE AREAS
- UXO - TO BE SURFACE CLEARED BY THE UXO CONTRACTOR.
- LIMITS OF CONSTRUCTION

150' 75' 0 150' 300' 450'
GRAPHIC SCALE: 1"=150'-0"



GEOINSIGHT FIGURE 3B
OVERALL SITE PLAN



US Army Corps
of Engineers®

DATE	DESCRIPTION	MARK

DESIGNED BY: S. CURRY	ISSUE DATE: MARCH 2020	SOLUTION NO.: XXXX-XXXX	CONTRACT NO.: W912DY-15-D-0013	CATEGORY CODE: XXX-XX-XX	FILENAME: DMPO_C-101.dgn
DRAWN BY: M. MAXER	CHECKED BY: C. LOWE	SUBMITTED BY: C. LOWE	SIZE: ANSI D		
U.S. ARMY CORPS OF ENGINEERS 600 DR MARTIN LUTHER KING JR PL LOUISVILLE DISTRICT LOUISVILLE, KENTUCKY					
Mason & Hanger A Division of Jacobs Engineering Group					

DEVENS, MASSACHUSETTS
AUTOMATED MULTIPURPOSE MACHINE GUN (MPMG) RANGE
FY21, PN: 088752
SITE
UXO COORDINATION PLAN

SHEET ID
C-101