

PRELIMINARY SUBDIVISION PLANS

FOR

McGOVERN BOULEVARD EXTENSION



LOCATION OF SITE

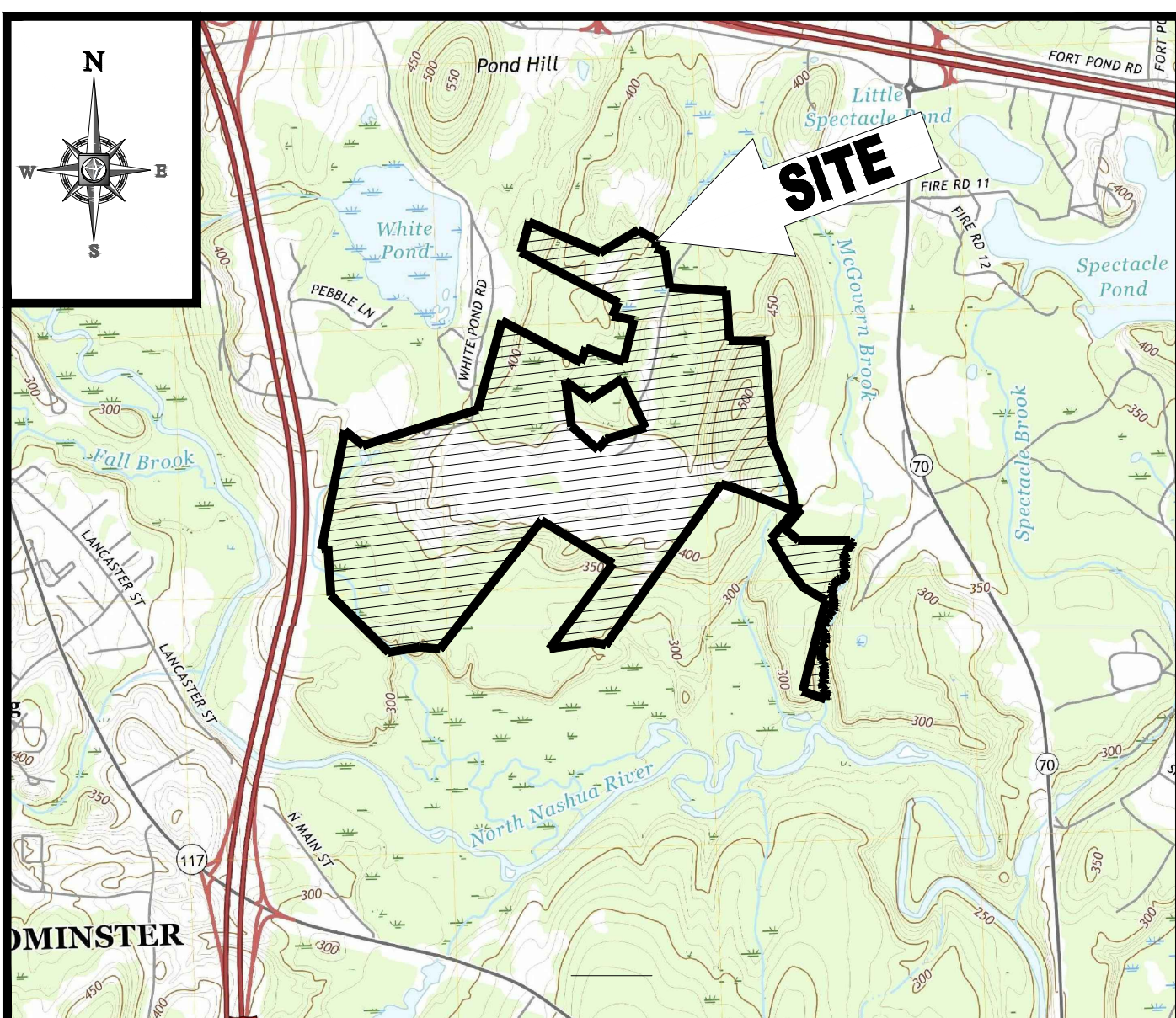
McGOVERN BOULEVARD, TOWN OF LANCASTER
WORCESTER COUNTY, MASSACHUSETTS

MAP 8: LOTS 39C, 42 & 45

MAP 9: LOTS 2, 5 & 8A

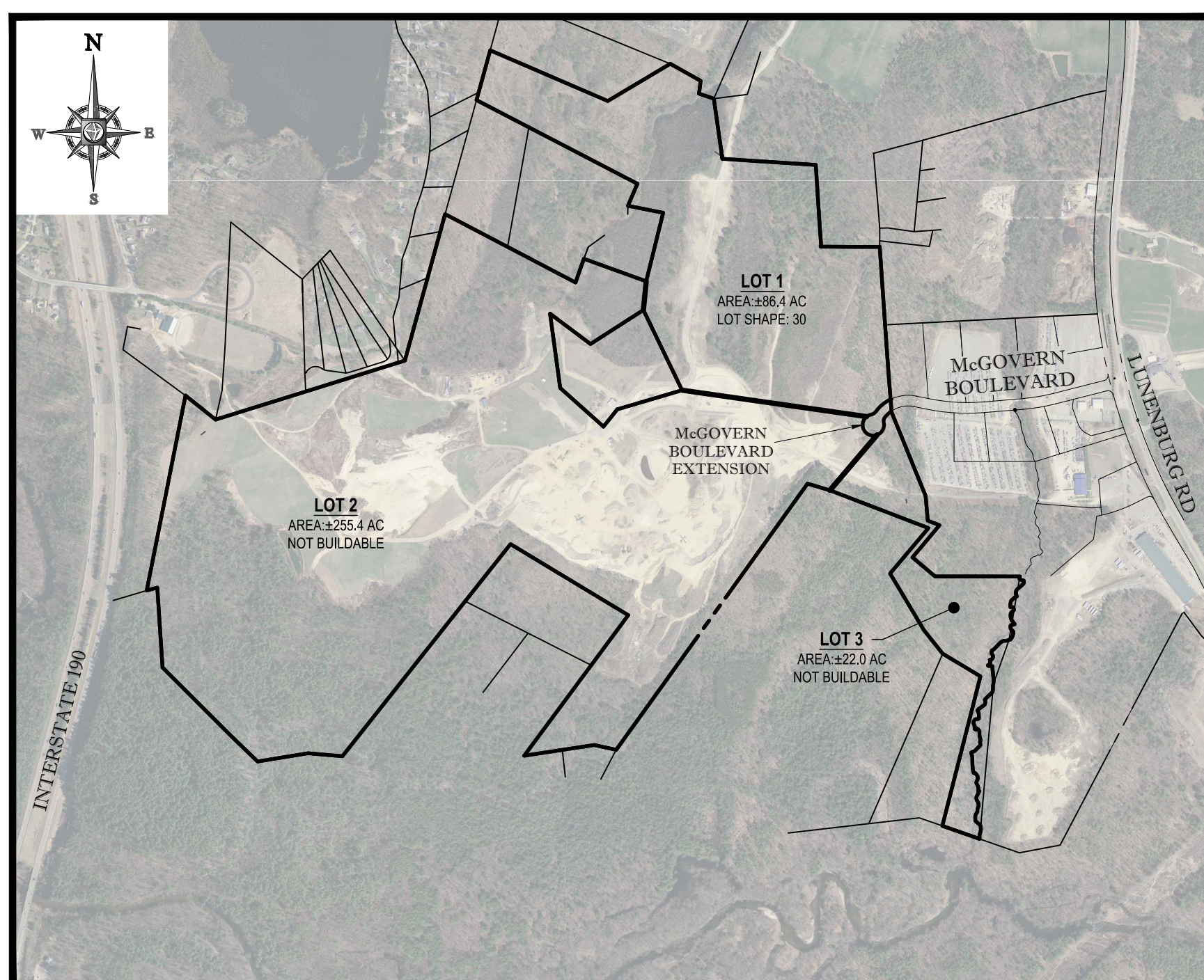
MAP 13: LOTS 2, 3, 4, 7 & 8

MAP 14: LOTS 1, 2, 3, 3A, 3B, 8B, 9D, 11A, 12 & 13, PARCEL B-2 & PARCEL B-



LOCATION MAP

SCALE: 1"=2000'
PLAN REFERENCE: CLINTON AND SHIRLEY USGS QUADRANGLE

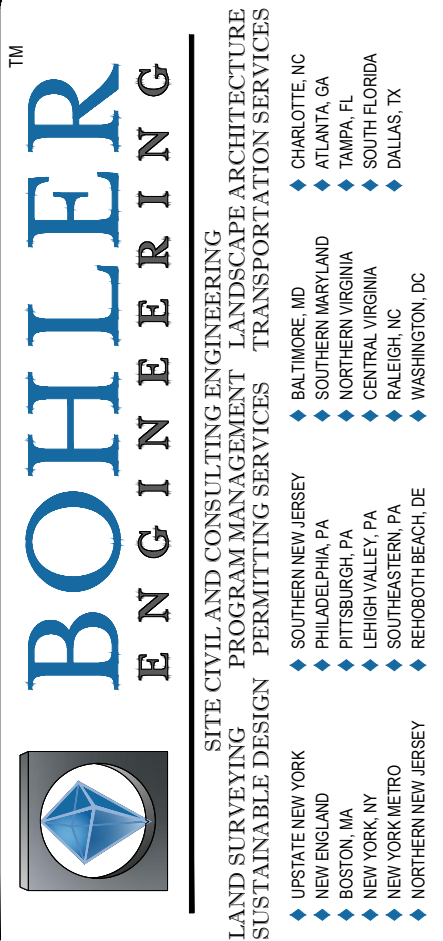


LOCUS PLAN

SCALE: 1" = 1.00'

[illegible]

SHEET INDEX



REVISIONS		
REV	DATE	COMMENT
1		
2		
3		
4		
5		
6		
7		
8		
9		
10		
11		
12		
13		
14		
15		

PRELIMINARY PLAN

PROJECT No.:	W181228
DRAWN BY:	AJS
CHECKED BY:	JAK
DATE:	01/28/2020
SCALE:	AS NOTED
CAD I:W181228_SS0_PRELIMSUB-COV&NOT	

PRELIMINARY
SUBDIVISION
PLANS
—FOR—



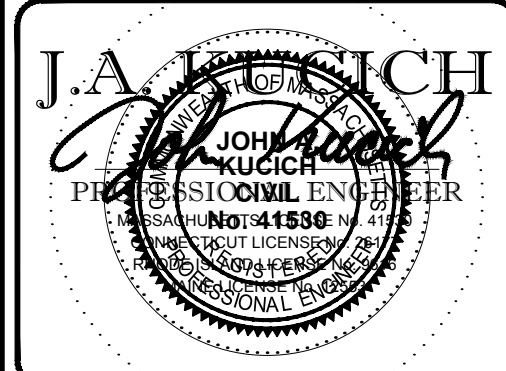
McGOVERN BOULEVARD
EXTENSION

LOCATION OF SITE

McGOVERN BOULEVARD
TOWN OF LANCASTER
WORCESTER COUNTY,
MASSACHUSETTS



352 TURNPIKE ROAD
SOUTHBOROUGH, MA 01772
Phone: (508) 480-9900
Fax: (508) 480-9080



SHEET TITLE:

COVER SHEET

SHEET NUMBER

1
OF 6

REV 0 - 01/28/2020

GENERAL NOTES

CONTRACTOR IS RESPONSIBLE FOR COMPLIANCE WITH THE NOTES AND SPECIFICATIONS CONTAINED HEREIN. CONTRACTOR IS RESPONSIBLE TO ENSURE THAT ALL SUBCONTRACTORS FULLY AND COMPLETELY CONFORM TO AND COMPLY WITH THESE REQUIREMENTS.

- THE FOLLOWING DOCUMENTS ARE INCORPORATED BY REFERENCE AS PART OF THIS SITE PLAN:

- ABBREVIATED NOTICE OF RESOURCE AREA DELINEATION, PREPARED BY CONTROL POINT ASSOCIATES, INC., DATE: 08/29/18, REVISED 01/02/2019.
- DEFINITIVE SUBDIVISION PLAN FOR MCGOVERN PLACE, PREPARED BY HANIGAN ENGINEERING, INC., DATE: 01/23/2014 & REVISED: 02/10/2014.
- PRELIMINARY SUBDIVISION PLANS, PREPARED BY HANIGAN ENGINEERING, INC., DATE: 01/10/2014 & REVISED: 01/28/2014.

PRIOR TO THE START OF CONSTRUCTION, THE CONTRACTOR MUST VERIFY THAT HESHE HAS THE LATEST EDITION OF THE DOCUMENTS REFERENCED ABOVE. THIS IS CONTRACTOR'S RESPONSIBILITY.

- ALL ACCESSIBLE (AKA ADA) PARKING SPACES MUST BE CONSTRUCTED TO MEET, AT A MINIMUM, THE MORE STRINGENT OF THE REQUIREMENTS OF THE "AMERICANS WITH DISABILITIES ACT" (ADA) CODE (42 U.S.C. § 12101 et seq.) AND 42 U.S.C. § 4151 et seq.) OR THE REQUIREMENTS OF THE JURISDICTION WHERE THE PROJECT IS TO BE CONSTRUCTED, AND ANY AND ALL AMENDMENTS TO BOTH WHICH ARE IN EFFECT WHEN THESE PLANS ARE COMPLETED.

PRIOR TO STARTING CONSTRUCTION, THE CONTRACTOR IS RESPONSIBLE TO ENSURE THAT ALL REQUIRED PERMITS AND APPROVALS HAVE BEEN OBTAINED. NO CONSTRUCTION OR FABRICATION SHALL BEGIN UNTIL THE CONTRACTOR HAS RECEIVED AND THOROUGHLY REVIEWED THE COMMENTS TO ALL PLANS AND OTHER DOCUMENTS REVIEWED AND APPROVED BY THE PERMITTING AUTHORITIES AND CONFIRMED THAT ALL NECESSARY OR REQUIRED PERMITS HAVE BEEN OBTAINED. CONTRACTOR MUST HAVE COPIES OF ALL PERMITS AND APPROVALS ON SITE AT ALL TIMES.

- THE OWNER/CONTRACTOR MUST BE FAMILIAR WITH AND RESPONSIBLE FOR THE PROCUREMENT OF ANY AND ALL CERTIFICATIONS REQUIRED FOR THE ISSUANCE OF A CERTIFICATE OF OCCUPANCY.

ALL WORK MUST BE PERFORMED IN ACCORDANCE WITH THESE PLANS, SPECIFICATIONS AND CONDITIONS OF APPROVAL, AND ALL APPLICABLE REQUIREMENTS, RULES, REGULATIONS, STATUTORY REQUIREMENTS, CODES, LAWS AND STANDARDS OF ALL GOVERNMENTAL ENTITIES WITH JURISDICTION OVER THIS PROJECT.

- THE GEOTECHNICAL REPORT AND RECOMMENDATIONS SET FORTH HEREIN ARE A PART OF THE REQUIRED CONSTRUCTION DOCUMENTS AND, IN CASE OF CONFLICT, DISCREPANCY OR AMBIGUITY, THE MORE STRINGENT REQUIREMENTS AND/OR RECOMMENDATIONS CONTAINED IN THE PLANS AND THE GEOTECHNICAL REPORT AND RECOMMENDATIONS SHALL TAKE PRECEDENCE UNLESS SPECIFICALLY NOTED OTHERWISE ON THE PLANS. THE CONTRACTOR MUST NOTIFY THE ENGINEER, IN WRITING, OF ANY SUCH CONFLICT, DISCREPANCY OR AMBIGUITY BETWEEN THE GEOTECHNICAL REPORTS AND PLANS AND SPECIFICATIONS PRIOR TO PROCEEDING WITH ANY FURTHER WORK.

THESE PLANS ARE BASED ON INFORMATION PROVIDED TO BOHLER ENGINEERING BY THE OWNER AND OTHERS PRIOR TO THE TIME OF PLAN PREPARATION. CONTRACTOR MUST FIELD VERIFY EXISTING CONDITIONS AND NOTIFY BOHLER ENGINEERING, IN WRITING, IMMEDIATELY IF ACTUAL SITE CONDITIONS DIFFER FROM THOSE SHOWN ON THE PLAN OR IF THE PROPOSED WORK CONFLICTS WITH ANY OTHER SITE FEATURES.

- ALL DIMENSIONS SHOWN ON THE PLANS MUST BE FIELD VERIFIED BY THE CONTRACTOR PRIOR TO THE START OF CONSTRUCTION. CONTRACTOR MUST NOTIFY ENGINEER, IN WRITING, IF ANY CONFLICTS, DISCREPANCIES, OR AMBIGUITIES EXIST PRIOR TO PROCEEDING WITH CONSTRUCTION. NO EXTRA COMPENSATION WILL BE PAID TO THE CONTRACTOR FOR WORK WHICH HAS TO BE REDONE OR REPAIRED DUE TO DIMENSIONS OR GRADES SHOWN INCORRECTLY ON THESE PLANS PRIOR TO CONTRACTOR GIVING ENGINEER WRITTEN NOTIFICATION OF SAME AND ENGINEER, THEREAFTER, PROVIDING CONTRACTOR WITH WRITTEN AUTHORIZATION TO PROCEED WITH SUCH ADDITIONAL WORK.

CONTRACTOR MUST REFER TO THE ARCHITECTURAL/BUILDING PLANS "OF RECORD" FOR EXACT LOCATIONS AND DIMENSIONS OF ENTRY/EXIT POINTS, ELEVATIONS, PRECISE BUILDING DIMENSIONS, AND EXACT BUILDING UTILITY LOCATIONS.

- PRIOR TO THE START OF CONSTRUCTION, THE CONTRACTOR MUST COORDINATE THE BUILDING LAYOUT BY CAREFUL REVIEW OF THE ENTIRE SITE PLAN AND THE LATEST ARCHITECTURAL PLANS (INCLUDING, BUT NOT LIMITED TO, STRUCTURAL, MECHANICAL, ELECTRICAL, PLUMBING AND FIRE SUPPRESSION PLAN, WHERE APPLICABLE). CONTRACTOR MUST IMMEDIATELY NOTIFY OWNER, ARCHITECT AND SITE ENGINEER, IN WRITING, OF ANY CONFLICTS, DISCREPANCIES OR AMBIGUITIES WHICH EXIST.

ALL DEBRIS MUST NOT BE BURIED ON THE SUBJECT SITE AND ALL UNSUITABLE EXCAVATED MATERIAL AND DEBRIS (SOLID WASTE) MUST BE DISPOSED OF IN ACCORDANCE WITH THE REQUIREMENTS OF ANY AND ALL GOVERNMENTAL AUTHORITIES WHICH HAVE JURISDICTION OVER THIS PROJECT OR OVER CONTRACTOR.

- THE CONTRACTOR IS RESPONSIBLE FOR IDENTIFYING WHEN SHORING IS REQUIRED AND FOR INSTALLING ALL SHORING REQUIRED DURING EXCAVATION (TO BE PERFORMED IN ACCORDANCE WITH CURRENT OSHA STANDARDS) AND ANY ADDITIONAL PRECAUTIONS TO BE TAKEN TO ASSURE THE STABILITY OF ADJACENT, NEARBY AND CONTIGUOUS STRUCTURES AND PROPERTIES.

THE CONTRACTOR IS TO EXERCISE EXTREME CARE WHEN PERFORMING ANY WORK ACTIVITIES ADJACENT TO PAVEMENT, STRUCTURES, ETC. WHICH ARE TO REMAIN EITHER FOR AN INITIAL PHASE OF THE PROJECT OR AS PART OF THE FINAL CONDITION. CONTRACTOR IS RESPONSIBLE FOR TAKING ALL APPROPRIATE PRECAUTIONS REQUIRED TO ENSURE THE STRUCTURAL STABILITY OF SIDEWALKS AND PAVEMENT, UTILITIES, BUILDINGS, AND INFRASTRUCTURE WHICH ARE TO REMAIN, AND TO PROVIDE A SAFE WORK AREA FOR THIRD PARTIES, PEDESTRIANS AND ANYONE INVOLVED WITH THE PROJECT.

- THE CONTRACTOR IS RESPONSIBLE FOR REPAIRING ANY DAMAGE DONE TO ANY NEW OR EXISTING CONSTRUCTION OR PROPERTY DURING THE COURSE OF CONSTRUCTION, INCLUDING BUT NOT LIMITED TO DRAINAGE, UTILITIES, PAVEMENT, STRIPING, CURB, ETC. AND SHALL BEAR ALL COSTS ASSOCIATED WITH SAME TO INCLUDE, BUT NOT BE LIMITED TO, REDESIGN, RE-SURVEY, RE-PERMITTING AND CONSTRUCTION. THE CONTRACTOR IS RESPONSIBLE FOR AND MUST REPLACE ALL SIGNAL, INTERCONNECTION CABLE, WIRING CONDUITS, AND ANY UNDERGROUND ACCESSORY EQUIPMENT DAMAGED DURING CONSTRUCTION AND MUST BEAR ALL COSTS ASSOCIATED WITH SAME. THE REPAIR OF ANY SUCH NEW OR EXISTING CONSTRUCTION OR PROPERTY MUST RESTORE SUCH CONSTRUCTION OR PROPERTY TO A CONDITION EQUIVALENT TO OR BETTER THAN THE CONDITIONS PRIOR TO COMMENCEMENT OF THE CONSTRUCTION, AND IN CONFORMANCE WITH APPLICABLE CODES, LAWS, RULES, REGULATIONS, STATUTORY REQUIREMENTS AND STATUTES. CONTRACTOR MUST BEAR ALL COSTS ASSOCIATED WITH SAME. CONTRACTOR IS RESPONSIBLE TO DOCUMENT ALL EXISTING DAMAGE AND TO NOTIFY THE OWNER AND THE CONSTRUCTION MANAGER PRIOR TO THE START OF CONSTRUCTION.

ALL CONCRETE MUST BE AIR ENTRAINED AND HAVE THE MINIMUM COMPRESSIVE STRENGTH OF 4,000 PSI AT 28 DAYS UNLESS OTHERWISE NOTED ON THE PLANS, DETAILS AND/OR GEOTECHNICAL REPORT.

- THE ENGINEER IS NOT RESPONSIBLE FOR CONSTRUCTION METHODS, MEANS, TECHNIQUES OR PROCEDURES, GENERALLY OR FOR THE CONSTRUCTION MEANS, METHODS, TECHNIQUES OR PROCEDURES FOR COMPLETION OF THE WORK DEPICTED BOTH ON THESE PLANS AND FOR ANY CONFLICTS/SCOPE REVISIONS WHICH RESULT FROM SAME. CONTRACTOR IS RESPONSIBLE FOR DETERMINING THE METHODS/MEANS FOR COMPLETION OF THE WORK PRIOR TO THE COMMENCEMENT OF CONSTRUCTION.

THE ENGINEER OF RECORD IS NOT RESPONSIBLE FOR JOB SITE SAFETY. THE ENGINEER OF RECORD HAS NOT BEEN RETAINED TO PERFORM OR BE RESPONSIBLE FOR JOB SITE SAFETY. SAME BEING WHOLLY OUTSIDE OF ENGINEER'S SERVICES AS RELATED TO THE PROJECT. THE ENGINEER OF RECORD IS NOT RESPONSIBLE TO IDENTIFY OR REPORT ANY JOB SITE SAFETY ISSUES, AT ANY TIME.

- ALL CONTRACTORS MUST CARRY THE SPECIFIED STATUTORY WORKERS COMPENSATION INSURANCE, EMPLOYER'S LIABILITY INSURANCE AND LIMITS OF COMMERCIAL GENERAL LIABILITY INSURANCE. ALL THEIR CO. POLICIES ENDORSED TO NAME BOHLER ENGINEERING, AND ITS PAST, PRESENT AND FUTURE OWNERS, OFFICERS, DIRECTORS, PARTNERS, SHAREHOLDERS, MEMBERS, PRINCIPALS, COMMISSIONERS, AGENTS, SERVANTS, EMPLOYEES, AFFILIATES, SUBSIDIARIES, AND RELATED ENTITIES, AND ITS SUBCONTRACTORS AND SUBCONSULTANTS AS ADDITIONAL NAMED INSURED AND TO PROVIDE CONTRACTUAL LIABILITY COVERAGE SUFFICIENT TO INSURE THIS HOLD HARMLESS AND INDEMNITY OBLIGATIONS ASSUMED BY THE CONTRACTORS. ALL CONTRACTORS MUST FURNISH BOHLER ENGINEERING WITH CERTIFICATIONS OF INSURANCE AS EVIDENCE OF THE REQUIRED INSURANCE PRIOR TO COMMENCING WORK AND UPON RENEWAL OF EACH POLICY DURING THE ENTIRE PERIOD OF CONSTRUCTION AND FOR ONE YEAR AFTER THE COMPLETION OF CONSTRUCTION. IN ADDITION, ALL CONTRACTORS WILL, TO THE FULLEST EXTENT PERMITTED UNDER THE LAW, INDEMNIFY, DEFEND AND HOLD HARMLESS BOHLER ENGINEERING AND ITS PAST, PRESENT AND FUTURE OWNERS, OFFICERS, DIRECTORS, PARTNERS, SHAREHOLDERS, MEMBERS, PRINCIPALS, COMMISSIONERS, AGENTS, SERVANTS, EMPLOYEES, AFFILIATES, SUBSIDIARIES, AND RELATED ENTITIES, AND ITS SUBCONTRACTORS AND SUBCONSULTANTS FROM AND AGAINST ANY DAMAGES, INJURIES, CLAIMS, ACTIONS, PENALTIES, EXPENSES, PUNITIVE DAMAGES, TORT DAMAGES, STATUTORY CLAIMS, STATUTORY CAUSES OF ACTION, LOSSES, CAUSES OF ACTION, LIABILITIES OR COSTS, INCLUDING, BUT NOT LIMITED TO, REASONABLE ATTORNEY'S FEES AND DEFENSE COSTS, ARISING OUT OF OR IN ANY WAY CONNECTED WITH OR TO THE PROJECT, INCLUDING ALL CLAIMS BY EMPLOYEES OF THE CONTRACTORS, ALL CLAIMS BY THIRD PARTIES AND ALL CLAIMS RELATED TO THE PROJECT. CONTRACTOR MUST NOTIFY ENGINEER, IN WRITING, AT LEAST THIRTY (30) DAYS PRIOR TO ANY TERMINATION, SUSPENSION OR CHANGE OF ITS INSURANCE HEREUNDER.

BOHLER ENGINEERING WILL REVIEW OR TAKE OTHER APPROPRIATE ACTION ON THE CONTRACTOR SUBMITTALS, SUCH AS SHOP DRAWINGS, PRODUCT DATA, SAMPLES, AND OTHER DATA, WHICH THE CONTRACTOR IS REQUIRED TO SUBMIT, BUT ONLY FOR THE LIMITED PURPOSE OF CHECKING FOR CONFORMANCE WITH THE DESIGN INTENT AND THE INFORMATION SHOWN IN THE CONSTRUCTION CONTRACT DOCUMENTS. CONSTRUCTION MEANS AND/OR METHODS AND/OR TECHNIQUES OR PROCEDURES, COORDINATION OF THE WORK WITH OTHER TRADES, AND CONSTRUCTION SAFETY PRECAUTIONS ARE THE SOLE RESPONSIBILITY OF THE CONTRACTOR AND BOHLER HAS NO RESPONSIBILITY OR LIABILITY FOR SAME. HEREUNDER, BOHLER ENGINEERING WILL BE CONDUCTED WITH REASONABLE PROMPTNESS WHILE THE CONSTRUCTION OF EACH POLICY DURING THE SUFFICIENT TIME TO PERMIT ADEQUATE REVIEW. REVIEW OF A SPECIFIC ITEM MUST NOT INDICATE THAT BOHLER ENGINEERING HAS REVIEWED THE ENTIRE ASSEMBLY OF WHICH THE ITEM IS A COMPONENT. BOHLER ENGINEERING WILL NOT BE RESPONSIBLE FOR ANY DEVIATIONS FROM THE CONSTRUCTION DOCUMENTS NOT PROMPTLY AND IMMEDIATELY BROUGHT TO ITS ATTENTION, IN WRITING, BY THE CONTRACTOR. BOHLER ENGINEERING WILL NOT BE REQUIRED TO REVIEW PARTIAL SUBMISSIONS OR THOSE FOR WHICH SUBMISSIONS OF CORRELATED ITEMS HAVE NOT BEEN RECEIVED.

NEITHER THE PROFESSIONAL ACTIVITIES OF BOHLER ENGINEERING, NOR THE PRESENCE OF BOHLER ENGINEERING AND/OR ITS PAST, PRESENT AND FUTURE OWNERS, OFFICERS, DIRECTORS, PARTNERS, SHAREHOLDERS, MEMBERS, PRINCIPALS, COMMISSIONERS, AGENTS, SERVANTS, EMPLOYEES, AFFILIATES, SUBSIDIARIES, AND RELATED ENTITIES, AND ITS SUBCONTRACTORS AND SUBCONSULTANTS AT A CONSTRUCTION/PROJECT SITE, SHALL RELIEVE THE GENERAL CONTRACTOR OF ITS OBLIGATIONS, DUTIES AND RESPONSIBILITIES INCLUDING, BUT NOT LIMITED TO, CONSTRUCTION MEANS, METHODS, SEQUENCE, TECHNIQUES OR PROCEDURES NECESSARY FOR PERFORMING, OVERSEEING, SUPERVISING AND COORDINATING THE WORK IN ACCORDANCE WITH THE CONTRACT DOCUMENTS AND COMPLIANCE WITH ANY AND ALL SAFETY PRECAUTIONS REQUIRED BY ANY REGULATORY AGENCIES WITH JURISDICTION OVER THE PROJECT AND/OR PROPERTY. BOHLER ENGINEERING AND ITS PERSONNEL HAVE NO AUTHORITY TO EXERCISE ANY CONTROL OVER ANY CONSTRUCTION CONTRACTOR OR ITS EMPLOYEES IN CONNECTION WITH THEIR WORK OR ANY HEALTH OR SAFETY PROGRAMS OR PROCEDURES. THE GENERAL CONTRACTOR IS SOLELY RESPONSIBLE FOR JOB SITE SAFETY. BOHLER ENGINEERING MUST BE INDEMNIFIED BY THE GENERAL CONTRACTOR AND MUST BE NAMED AN ADDITIONAL INSURED UNDER THE GENERAL CONTRACTOR'S POLICIES OF GENERAL LIABILITY INSURANCE AS DESCRIBED ABOVE IN NOTE 19 FOR JOB SITE SAFETY.

- IF THE CONTRACTOR DEVIATES FROM THE PLANS AND SPECIFICATIONS, INCLUDING THE NOTES CONTAINED HEREIN, WITHOUT FIRST OBTAINING THE PRIOR WRITTEN AUTHORIZATION OF THE ENGINEER FOR SUCH DEVIATIONS, THE CONTRACTOR IS SOLELY RESPONSIBLE FOR THE PAYMENT OF ALL COSTS INCURRED IN CORRECTING ANY WORK DONE WHICH DEVIATES FROM THE PLANS, ALL FINES AND/OR PENALTIES ASSESSED WITH RESPECT THERETO AND ALL COMPENSATORY OR PUNITIVE DAMAGES RESULTING THEREFROM AND, FURTHER, SHALL DEFEND, INDEMNIFY AND HOLD HARMLESS THE ENGINEER, TO THE FULLEST EXTENT PERMITTED UNDER THE LAW, IN ACCORDANCE WITH PARAGRAPH 19 HEREIN, FOR AND FROM ALL FEES, ATTORNEY'S FEES, DAMAGES, COSTS, JUDGMENTS, PENALTIES AND THE LIKE RELATED TO SAME.

CONTRACTOR IS RESPONSIBLE FOR MAINTENANCE AND PROTECTION OF TRAFFIC PLAN FOR ALL WORK THAT AFFECTS PUBLIC TRAVEL, EITHER IN THE R.O.W. OR ON SITE. THE COST FOR THIS ITEM MUST BE INCLUDED IN THE CONTRACTOR'S PRICE.

- ALL SIGNING AND PAVEMENT STRIPING MUST CONFORM TO MANUAL ON UNIFORM TRAFFIC CONTROL DEVICES OR LOCALLY APPROVED SUPPLEMENT.

ENGINEER IS NOT RESPONSIBLE FOR ANY INJURY OR DAMAGES RESULTING FROM CONTRACTOR'S FAILURE TO BUILD OR CONSTRUCT IN STRICT ACCORDANCE WITH THE APPROVED PLANS. IF CONTRACTOR AND/OR OWNER FAIL TO BUILD OR CONSTRUCT IN STRICT ACCORDANCE WITH APPROVED PLANS, THEY AGREE TO JOINTLY AND SEVERALLY INDEMNIFY AND HOLD ENGINEER HARMLESS FOR ALL INJURIES AND DAMAGES THAT ENGINEER SUFFERS AND COSTS THAT ENGINEER INCURS.

OWNER MUST MAINTAIN AND PRESERVE ALL PHYSICAL SITE FEATURES AND DESIGN FEATURES DEPICTED ON THE PLANS AND RELATED DOCUMENTS, IN STRICT ACCORDANCE WITH THE APPROVED PLAN(S) AND DESIGN AND, FURTHER ENGINEER IS NOT RESPONSIBLE FOR ANY FAILURE TO MAINTAIN OR PRESERVE SITE AND/OR DESIGN FEATURES. IF OWNER FAILS TO MAINTAIN AND/OR PRESERVE ALL PHYSICAL SITE FEATURES AND/OR DESIGN FEATURES DEPICTED ON THE PLANS AND RELATED DOCUMENTS, OWNER AGREES TO INDEMNIFY AND HOLD ENGINEER HARMLESS FOR ALL INJURIES AND DAMAGES THAT ENGINEER SUFFERS AND COSTS THAT ENGINEER INCURS AS A RESULT OF SAID FAILURE.

- ALL DIMENSIONS MUST BE TO FACE OF CURB, EDGE OF PAVEMENT, OR EDGE OF BUILDING, UNLESS NOTED OTHERWISE.

ALL CONSTRUCTION AND MATERIALS MUST COMPLY WITH AND CONFORM TO APPLICABLE FEDERAL, STATE AND LOCAL REGULATIONS, LAWS, ORDINANCES, RULES AND CODES, AND ALL APPLICABLE OSHA REQUIREMENTS.

CONTRACTOR AND OWNER MUST INSTALL ALL ELEMENTS AND COMPONENTS IN STRICT COMPLIANCE WITH AND ACCORDANCE WITH MANUFACTURER'S STANDARDS AND RECOMMENDED INSTALLATION CRITERIA AND SPECIFICATIONS. IF CONTRACTOR AND/OR OWNER FAIL TO DO SO, THEY AGREE TO JOINTLY AND SEVERALLY INDEMNIFY AND HOLD ENGINEER HARMLESS FOR ALL INJURIES AND DAMAGES THAT ENGINEER SUFFERS AND COSTS THAT ENGINEER INCURS AS A RESULT OF SAID FAILURE.

CONTRACTOR IS RESPONSIBLE TO MAINTAIN ON SITE STORMWATER POLLUTION PREVENTION PLAN (SWPPP) IN COMPLIANCE WITH EPA REQUIREMENTS FOR SITES WHERE ONE (1) ACRE OR MORE (UNLESS THE LOCAL JURISDICTION REQUIRES FEWER) IS DISTURBED BY CONSTRUCTION ACTIVITIES. CONTRACTOR IS RESPONSIBLE TO ENSURE THAT ALL ACTIVITIES, INCLUDING THOSE OF SUBCONTRACTORS, ARE IN COMPLIANCE WITH THE SWPPP, INCLUDING BUT NOT LIMITED TO LOGGING ACTIVITIES (MINIMUM ONCE PER WEEK AND AFTER RAINFALL EVENTS) AND CORRECTIVE MEASURES, AS APPROPRIATE.

AS CONTAINED IN THESE DRAWINGS AND ASSOCIATED APPLICATION DOCUMENTS PREPARED BY THE SIGNATORY PROFESSIONAL ENGINEER, THE USE OF THE WORDS "CERTIFY" OR "CERTIFICATION" CONSTITUTES AN EXPRESSION OF PROFESSIONAL OPINION REGARDING THE INFORMATION WHICH IS THE SUBJECT OF THE UNDERGROUND UTILITIES. THE PROFESSIONAL ENGINEER'S KNOWLEDGE OR BELIEF AND IN ACCORDANCE WITH COMMON ACCEPTED PROCEDURE CONSISTENT WITH THE APPLICABLE STANDARDS OF PRACTICE, AND DOES NOT CONSTITUTE A WARRANTY OR GUARANTEE, EITHER EXPRESSED OR IMPLIED.

GENERAL GRADING & UTILITY PLAN NOTES

- LOCATIONS OF ALL EXISTING AND PROPOSED SERVICES ARE APPROXIMATE AND MUST BE INDEPENDENTLY CONFIRMED WITH LOCAL UTILITY COMPANIES PRIOR TO COMMENCEMENT OF ANY CONSTRUCTION OR EXCAVATION. SANITARY SEWER AND ALL OTHER UTILITY SERVICE CONNECTION POINTS MUST BE INDEPENDENTLY CONFIRMED BY THE CONTRACTOR IN THE FIELD PRIOR TO THE COMMENCEMENT OF CONSTRUCTION. ALL DISCREPANCIES MUST IMMEDIATELY BE REPORTED, IN WRITING, TO THE ENGINEER. CONSTRUCTION MUST COMMENCE BEGINNING AT THE LOWEST INVERT (POINT OF CONNECTION) AND PROGRESS UP GRADIENT. PROPOSED INTERFACE POINTS (CROSSINGS) WITH EXISTING UNDERGROUND UTILITIES SHALL BE FIELD VERIFIED BY TEST PIT PRIOR TO COMMENCEMENT OF CONSTRUCTION.

CONTRACTOR MUST VERTICALLY AND HORIZONTALLY LOCATE ALL UTILITIES AND SERVICES INCLUDING, BUT NOT LIMITED TO, GAS, WATER, ELECTRIC, SANITARY AND STORM SEWER, TELEPHONE, CABLE, FIBER OPTIC CABLE, ETC. WITHIN THE LIMITS OF DISTURBANCE OR WORK SPACE, WHICHEVER IS GREATER. THE CONTRACTOR MUST USE, REFER TO, AND COMPLY WITH THE REQUIREMENTS OF THE APPLICABLE UTILITY NOTIFICATION SYSTEM TO LOCATE ALL THE UNDERGROUND UTILITIES. THE CONTRACTOR IS RESPONSIBLE FOR REPAIRING AND/OR DAMAGE TO ANY EXISTING UTILITIES DURING CONSTRUCTION, AT NO COST TO THE OWNER. CONTRACTOR SHALL BEAR ALL COSTS ASSOCIATED WITH DAMAGE TO ANY EXISTING UTILITIES DURING CONSTRUCTION.

- IT IS THE CONTRACTOR'S RESPONSIBILITY TO REVIEW ALL CONSTRUCTION CONTRACT DOCUMENTS INCLUDING, BUT NOT LIMITED TO, ALL OF THE DRAWINGS AND SPECIFICATIONS ASSOCIATED WITH THE PROJECT WORK SPACE PRIOR TO THE INITIATION AND COMMENCEMENT OF CONSTRUCTION. SHOULD THE CONTRACTOR FIND A CONFLICT AND/OR DISCREPANCY BETWEEN THE DOCUMENTS RELATIVE TO THE SPECIFICATIONS OR THE RELATIVE OR APPLICABLE CODES, REGULATIONS, LAWS, RULES, STATUTES AND/OR ORDINANCES, IT IS THE CONTRACTOR'S SOLE RESPONSIBILITY TO NOTIFY THE PROJECT ENGINEER OF RECORD, IN WRITING, OF SAID CONFLICT AND/OR DISCREPANCY PRIOR TO THE START OF CONSTRUCTION. CONTRACTOR'S FAILURE TO NOTIFY THE PROJECT ENGINEER SHALL CONSTITUTE CONTRACTOR'S FULL AND COMPLETE ACCEPTANCE OF ALL RESPONSIBILITY TO COMPLETE THE SCOPE OF WORK AS DEFINED BY THE DRAWINGS AND IN FULL COMPLIANCE WITH ALL FEDERAL, STATE AND LOCAL REGULATIONS, LAWS, STATUTES, ORDINANCES AND CODES AND, FURTHER, CONTRACTOR SHALL BE RESPONSIBLE FOR ALL COSTS ASSOCIATED WITH SAME.

THE CONTRACTOR MUST LOCATE AND CLEARLY AND UNAMBIGUOUSLY DEFINE VERTICALLY AND HORIZONTALLY ALL ACTIVE AND INACTIVE UTILITY AND/OR SERVICE SYSTEMS THAT ARE TO BE REMOVED. THE CONTRACTOR IS RESPONSIBLE TO PROTECT AND MAINTAIN ALL ACTIVE AND INACTIVE SYSTEMS THAT ARE NOT BEING REMOVED/RELOCATED DURING SITE ACTIVITY.

- THE CONTRACTOR MUST FAMILIARIZE ITSELF WITH THE APPLICABLE UTILITY SERVICE PROVIDER REQUIREMENTS AND IS RESPONSIBLE FOR ALL COORDINATION REGARDING UTILITY DEMOLITION AS IDENTIFIED OR REQUIRED FOR THE PROJECT. THE CONTRACTOR MUST PROVIDE THE OWNER WITH WRITTEN NOTIFICATION THAT THE EXISTING UTILITIES AND SERVICES HAVE BEEN TERMINATED AND ABANDONED IN ACCORDANCE WITH THE JURISDICTION AND UTILITY COMPANY REQUIREMENTS AND ALL OTHER APPLICABLE REQUIREMENTS, RULES, STATUTES, LAWS, ORDINANCES AND CODES.

THE CONTRACTOR MUST INSTALL ALL STORM SEWER AND SANITARY SEWER COMPONENTS WHICH FUNCTION BY GRAVITY PRIOR TO THE INSTALLATION OF ALL OTHER UTILITIES.

- CONTRACTOR IS RESPONSIBLE FOR COORDINATION OF SITE PLAN DOCUMENTS AND ARCHITECTURAL DESIGN FOR EXACT BUILDING UTILITY CONNECTION LOCATIONS, GREASE TRAP REQUIREMENTS, AND DOOR ACCESS, AND EXTERIOR GRADING. THE ARCHITECT WILL DETERMINE THE UTILITY SERVICE SIZES. THE CONTRACTOR MUST COORDINATE INSTALLATION OF UTILITIES/SERVICES WITH THE INDIVIDUAL COMPANIES TO AVOID CONFLICTS AND TO ENSURE THAT PROPER DEPTHS ARE ACHIEVED. THE CONTRACTOR IS RESPONSIBLE FOR ENSURING THAT INSTALLATION OF ALL IMPROVEMENTS COMPLIES WITH ALL UTILITY REQUIREMENTS WITH JURISDICTION AND/OR CONTROL OF THE SITE, AND ALL OTHER APPLICABLE REQUIREMENTS, RULES, STATUTES, LAWS, ORDINANCES AND CODES. THE CONTRACTOR IS RESPONSIBLE FOR COORDINATING THE UTILITY CONNECTIONS PRIOR TO CONNECTING TO THE EXISTING UTILITY/SERVICE WHERE A CONFLICT EXISTS BETWEEN THESE SITE PLANS AND THE ARCHITECTURAL PLANS, OR WHERE ARCHITECTURAL PLAN UTILITY CONNECTION POINTS DIFFER, THE CONTRACTOR MUST IMMEDIATELY NOTIFY THE ENGINEER, IN WRITING, AND PRIOR TO CONSTRUCTION, RESOLVE SAME.

WEATHER SERVICES MATERIALS, BURIAL DEPTH, AND COVER REQUIREMENTS MUST BE SPECIFIED BY THE LOCAL UTILITY COMPANY. CONTRACTOR'S PRICE FOR WATER SERVICE MUST INCLUDE ALL FEES, COSTS AND APPURTENANCES REQUIRED BY THE UTILITY TO PROVIDE FULL AND COMPLETE WORKING SERVICE. CONTRACTOR MUST CONTACT THE APPLICABLE MUNICIPALITY TO CONFIRM THE PROPER WATER METER AND VAULT, PRIOR TO COMMENCING CONSTRUCTION.

- ALL NEW UTILITIES/SERVICES, INCLUDING ELECTRIC, TELEPHONE, CABLE, TV, ETC. ARE TO BE INSTALLED UNDERGROUND. ALL NEW UTILITIES/SERVICES MUST BE INSTALLED IN ACCORDANCE WITH THE UTILITY/SERVICE PROVIDER INSTALLATION SPECIFICATIONS AND STANDARDS.

SITE GRADING MUST BE PERFORMED IN ACCORDANCE WITH THESE PLANS AND SPECIFICATIONS AND THE RECOMMENDATIONS SET FORTH IN THE GEOTECHNICAL REPORT REFERENCED IN THIS PLAN SET. THE CONTRACTOR IS RESPONSIBLE FOR REMOVING AND REPLACING UNSUITABLE MATERIALS WITH SUITABLE MATERIALS AS SPECIFIED IN THE GEOTECHNICAL REPORT. ALL EXCAVATED OR FILLED AREAS MUST BE COMPACTED AS OUTLINED IN THE GEOTECHNICAL REPORT. MOISTURE CONTENT AT TIME OF PLACEMENT MUST BE SUBMITTED IN A COMPACTION REPORT PREPARED BY A QUALIFIED GEOTECHNICAL ENGINEER, REGISTERED WITH THE STATE WHERE THE WORK IS BEING PERFORMED, VERIFYING THAT ALL FILLED AREAS AND SUBGRADE AREAS WITHIN THE BUILDING PAD AREA AND AREAS TO BE PAVED HAVE BEEN COMPACTED IN ACCORDANCE WITH THESE PLANS, SPECIFICATIONS AND THE RECOMMENDATIONS SET FORTH IN THE GEOTECHNICAL REPORT AND ALL APPLICABLE REQUIREMENTS, RULES, STATUTES, LAWS, ORDINANCES AND CODES. SUBBASE MATERIAL FOR SIDEWALKS, CURB, OR ASPHALT MUST BE FREE OF ORGANICS AND OTHER UNSUITABLE MATERIALS. SHOULD SUBBASE BE DETERMINED UNSUITABLE BY OWNER/DEVELOPER REPRESENTATIVE, SUBBASE IS TO BE REMOVED AND FILLED WITH APPROVED FILL. THE CONTRACTOR MUST IMMEDIATELY NOTIFY THE PROJECT ENGINEER, IN WRITING, OF ANY CONFLICTS, DISCREPANCIES OR AMBIGUITIES WHICH EXIST WITH THE RECOMMENDATIONS IN THE GEOTECHNICAL REPORT AND ALL APPLICABLE REQUIREMENTS, RULES, STATUTES, LAWS, ORDINANCES AND CODES. EARTHWORK ACTIVITIES MUST COMPLY WITH THE STANDARD STATE DOT SPECIFICATIONS FOR ROADWAY CONSTRUCTION (LATEST EDITION) AND ANY AMENDMENTS OR REVISIONS THERETO.

- ALL FILL, COMPACTION, AND BACKFILL MATERIALS REQUIRED FOR UTILITY INSTALLATION MUST BE AS PER THE RECOMMENDATIONS PROVIDED IN THE GEOTECHNICAL REPORT AND MUST BE COORDINATED WITH THE APPLICABLE UTILITY COMPANY SPECIFICATIONS. WHEN THE PROJECT DOES NOT HAVE GEOTECHNICAL RECOMMENDATIONS, FILL AND COMPACTION MUST, AT A MINIMUM, COMPLY WITH THE STATE DOT REQUIREMENTS AND SPECIFICATIONS AND CONSULTANT SHALL HAVE NO LIABILITY OR RESPONSIBILITY FOR OR AS RELATED TO FILL, COMPACTION AND BACKFILL. FURTHER, CONTRACTOR IS FULLY RESPONSIBLE FOR EARTHWORK BACKFILL.

THE CONTRACTOR MUST COMPLY, TO THE FULLEST EXTENT, WITH THE LATEST OSHA STANDARDS AND REGULATIONS, AND/OR ANY OTHER AGENCY WITH JURISDICTION FOR EXCAVATION AND TRENCHING PROCEDURES. THE CONTRACTOR IS RESPONSIBLE FOR DETERMINING THE "MEANS AND METHODS" REQUIRED TO MEET THE INTENT AND PERFORMANCE CRITERIA OF OSHA, AS WELL AS ANY OTHER ENTITY THAT HAS JURISDICTION FOR EXCAVATION AND/OR TRENCHING PROCEDURES AND CONSULTANT SHALL HAVE NO RESPONSIBILITY FOR OR AS RELATED FOR OR AS RELATED TO EXCAVATION AND TRENCHING PROCEDURES.

PAVEMENT MUST BE SAW CUT IN STRAIGHT LINES, AND EXCEPT FOR EDGE OF BUTT JOINTS, MUST EXTEND TO THE FULL DEPTH OF THE EXISTING PAVEMENT. ALL DEBRIS FROM REMOVAL OPERATIONS MUST BE REMOVED FROM THE SITE AT THE TIME OF EXCAVATION. STOCKPILING OF DEBRIS WILL NOT BE PERMITTED.

- THE TOPS OF EXISTING MANHOLES, INLET STRUCTURES, AND SANITARY CLEANOUT TOPS MUST BE ADJUSTED, AS NECESSARY, TO MATCH PROPOSED GRADES IN ACCORDANCE WITH ALL APPLICABLE STANDARDS, REQUIREMENTS, RULES, STATUTES, LAWS, ORDINANCES AND CODES.

DURING THE INSTALLATION OF SANITARY SEWER, STORM SEWER, AND ALL UTILITIES, THE CONTRACTOR MUST MAINTAIN A CONTEMPORANEOUS AND THOROUGH RECORD OF CONSTRUCTION TO RECORD THE AS-INSTALLED LOCATIONS OF ALL UNDERGROUND INFRASTRUCTURE. THE CONTRACTOR MUST CAREFULLY NOTE ANY INSTALLATIONS THAT DEVIATE FROM THE INFORMATION CONTAINED IN THE UTILITY PLAN. THIS RECORD MUST BE KEPT ON A CLEAN COPY OF THE DRAINAGE OR UTILITY PLAN, WHICH CONTRACTOR MUST PROMPTLY PROVIDE TO THE OWNER AT THE COMPLETION OF WORK.

WHEN THE SITE IMPROVEMENT PLANS INVOLVE MULTIPLE BUILDINGS, SOME OF WHICH MAY BE BUILT AT A LATER DATE, THE CONTRACTOR MUST EXTEND ALL LINES, INCLUDING BUT NOT LIMITED TO STORM SEWER, SANITARY SEWER, UTILITIES, AND IRRIGATION LINE, TO A POINT AT LEAST FIVE (5) FEET BEYOND THE PAVED AREAS FOR WHICH THE CONTRACTOR IS RESPONSIBLE. CONTRACTOR MUST CAP ENDS AS APPROPRIATE, MARK LOCATIONS WITH A 2X4, AND MUST NOTE THE LOCATION OF ALL OF THE ABOVE ON A CLEAN COPY OF THE DRAINAGE OR UTILITY PLAN, WHICH CONTRACTOR MUST PROMPTLY PROVIDE TO THE OWNER UPON COMPLETION OF THE WORK.

- THE CONTRACTOR IS FULLY RESPONSIBLE FOR VERIFICATION OF EXISTING TOPOGRAPHIC INFORMATION AND UTILITY INVERT ELEVATIONS PRIOR TO COMMENCING ANY CONSTRUCTION. CONTRACTOR MUST CONFIRM AND ENSURE 0.75% MINIMUM SLOPE AGAINST ALL ISLANDS, CUTTERS, AND CURBS, 1.0% ON ALL CONCRETE SURFACES, AND 1.5% MINIMUM ON ASPHALT (EXCEPT WHERE ADA REQUIREMENTS OR EXISTING TOPOGRAPHY LIMIT GRADIENTS). TO PREVENT PONDING, CONTRACTOR MUST IMMEDIATELY NOTIFY THE ENGINEER, ANY DISCREPANCIES THAT MAY OR COULD AFFECT THE PUBLIC SAFETY, HEALTH OR GENERAL WELFARE, OR PROJECT COST, IF CONTRACTOR PROCEEDS WITH CONSTRUCTION WITHOUT PROVIDING PROPER NOTIFICATION, MUST BE AT THE CONTRACTOR'S OWN RISK AND, FURTHER, CONTRACTOR SHALL INDEMNIFY, DEFEND AND HOLD HARMLESS THE DESIGN ENGINEER FOR ANY DAMAGES, COSTS, INJURIES, ATTORNEY'S FEES AND THE LIKE WHICH RESULT FROM SAME.

PROPOSED TOP OF CURB ELEVATIONS ARE GENERALLY 6" ABOVE EXISTING LOCAL ASPHALT GRADE UNLESS OTHERWISE NOTED. FIELD ADJUST TO CREATE A MINIMUM OF .07% GUTTER GRADE ALONG CURB FACE. IF IT IS CONTRACTOR'S OBLIGATION TO ENSURE THAT DESIGN ENGINEER APPROVES FINAL CURBING CUT SHEETS PRIOR TO INSTALLATION OF SAME.

REFER TO THIS SHEET FOR ADDITIONAL NOTES.

IN THE EVENT OF DISCREPANCIES AND/OR CONFLICTS BETWEEN PLANS OR RELATIVE TO OTHER PLANS, THE SITE PLAN WILL TAKE PRECEDENCE AND CONTROL. CONTRACTOR MUST IMMEDIATELY NOTIFY THE DESIGN ENGINEER, IN WRITING, OF ANY DISCREPANCIES AND/OR CONFLICTS.

CONTRACTOR IS REQUIRED TO SECURE ALL NECESSARY AND/OR REQUIRED PERMITS AND APPROVALS FOR ALL OFF SITE MATERIAL SOURCES AND DISPOSAL FACILITIES. CONTRACTOR MUST SUPPLY A COPY OF APPROVALS TO ENGINEER AND OWNER PRIOR TO INITIATING ANY WORK.

WHERE RETAINING WALLS (WHETHER OR NOT THEY MEET THE JURISDICTIONAL DEFINITION) ARE IDENTIFIED ON PLANS, ELEVATIONS IDENTIFIED ARE FOR THE EXPOSED PORTION OF THE WALL. FOUNDATION ELEVATIONS ARE NOT IDENTIFIED AND ARE TO BE DETERMINED BY THE CONTRACTOR BASED ON FINAL STRUCTURAL DESIGN SHOP DRAWINGS PREPARED BY THE APPROPRIATE PROFESSIONAL LICENSED IN THE STATE WHERE THE CONSTRUCTION OCCURS.

- STORM DRAINAGE PIPES UNLESS INDICATED OTHERWISE, ALL STORM SEWER PIPE MUST BE REINFORCED CONCRETE PIPE (RCP) CLASS III WITH SLT TIGHT JOINTS. WHEN HIGH-DENSITY POLYETHYLENE (HDPE) PIPE IS USED, THE CONTRACTOR MUST PROVIDE A SLOPE OF 1.0% TO MAINTAIN A MINIMUM OF 1.0% SLOPE WITH INTERIOR WITH ANGULAR CORRUGATIONS WITH GASKET FOR SLT TIGHT JOINT. PVC PIPE FOR ROOF DRAIN CONNECTION MUST BE SDR 26 OR SCHEDULE 40 UNLESS INDICATED OTHERWISE.

UNLESS INDICATED OTHERWISE ON THE DRAWINGS, SANITARY SEWER PIPE SHALL BE AS FOLLOWS:

- FOR PIPES LESS THAN 12 FT. DEEP: POLYVINYL CHLORIDE (PVC) SDR 35 PER ASTM D3034.
- FOR PIPES MORE THAN 12 FT. DEEP: POLYVINYL CHLORIDE (PVC) SDR 26 PER ASTM D3034.
- FOR PIPE WITHIN 10 FT. OF BUILDING, PIPE MATERIAL SHALL COMPLY WITH APPLICABLE BUILDING AND PLUMBING CODES. CONTRACTOR TO VERIFY WITH LOCAL OFFICIALS.

STORM AND SANITARY SEWER PIPE LENGTHS INDICATED ARE NOMINAL AND MEASURED CENTER OF INLET AND/OR MANHOLES STRUCTURE TO CENTER OF STRUCTURE.

STORMWATER ROOF DRAIN LOCATIONS ARE BASED ON PRELIMINARY ARCHITECTURAL PLANS. CONTRACTOR IS RESPONSIBLE TO AND FOR VERIFYING LOCATIONS OF SAME BASED ON FINAL ARCHITECTURAL PLANS.

SEWERS CROSSING STREAMS AND/OR LOCATION WITHIN 10 FEET OF THE STREAM EMBANKMENT, OR WHERE SITE CONDITIONS SO INDICATE, MUST BE CONSTRUCTED OF STEEL, REINFORCED CONCRETE, DUCTILE IRON OR NON-FLAMMABLE FIBER-REINFORCED PLASTIC. SEWERS CONVEYING SANITARY FLOW COMBINED SANITARY AND STORMWATER FLOW OR INDUSTRIAL FLOW MUST BE SEPARATED FROM WATER MAINS BY A DISTANCE OF AT LEAST 10 FEET HORIZONTALLY. IF SUCH LATERAL SEPARATION IS NOT POSSIBLE, THE PIPES MUST BE IN SEPARATE TRENCHES WITH THE SEWER AT LEAST 18 INCHES BELOW THE BOTTOM OF THE WATER MAIN, OR SUCH OTHER SEPARATION AS APPROVED BY THE GOVERNMENT AGENCY WITH JURISDICTION OVER SAME.

- WHERE APPROPRIATE SEPARATION FROM A WATER MAIN IS NOT POSSIBLE, THE SEWER MUST BE ENCASED IN CONCRETE OR CONSTRUCTED OF DUCTILE IRON PIPE USING MECHANICAL OR SLIP-ON JOINTS FOR A DISTANCE OF AT LEAST 10 FEET ON EITHER SIDE OF THE CROSSING. IN ADDITION, ONE FULL LENGTH OF SEWER PIPE SHOULD BE LOCATED SO BOTH JOINTS WILL BE AS FAR FROM THE WATER LINE AS POSSIBLE. WHERE A WATER MAIN CROSSES UNDER A SEWER, ADEQUATE STRUCTURAL SUPPORT FOR THE SEWER MUST BE PROVIDED.

WATER MAIN PIPING MUST BE INSTALLED IN ACCORDANCE WITH THE REQUIREMENTS AND SPECIFICATIONS OF THE LOCAL WATER PURVEYOR. IN THE ABSENCE OF SUCH REQUIREMENTS, WATER MAIN PIPING MUST BE CEMENT-LINED DUCTILE IRON (DIP) MINIMUM CLASS 52 THICKNESS. ALL PIPE AND APPURTENANCES MUST COMPLY WITH THE APPLICABLE AWWA STANDARDS IN EFFECT AT THE TIME OF APPLICATION.

CONTRACTOR MUST ENSURE THAT ALL UTILITY TRENCHES LOCATED IN EXISTING PAVED ROADWAYS INCLUDING SEWER, WATER AND STORM SYSTEMS, MUST BE REPAIRED IN ACCORDANCE WITH REFERENCED MUNICIPAL, COUNTY AND/OR DOT DETAILS AS APPLICABLE. CONTRACTOR MUST COORDINATE INSPECTION AND APPROVAL OF COMPLETED WORK WITH THE AGENCY WITH JURISDICTION OVER SAME.

- LOCATION OF PROPOSED UTILITY POLE RELOCATION IS AT THE SOLE DISCRETION OF UTILITY COMPANY.

CONSULTANT IS NEITHER LIABLE NOR RESPONSIBLE FOR ANY SUBSURFACE CONDITIONS AND FURTHER, SHALL HAVE NO LIABILITY FOR ANY HAZARDOUS MATERIALS, HAZARDOUS SUBSTANCES, OR POLLUTANTS ON, ABOUT OR UNDER THE PROPERTY.

RESIDENTIAL NOTES

- WHERE BASEMENTS ARE TO BE PROVIDED FOR PROPOSED DWELLING UNITS, THE DEVELOPER SHALL, BY BORING OR BY TEST PIT, DETERMINE THE DEPTH TO GROUNDWATER AT THE LOCATION OF THE PROPOSED DWELLINGS. WHERE GROUNDWATER IS ENCOUNTERED IN THE BASEMENT AREA, BASEMENTS WILL NOT BE INSTALLED UNLESS SPECIAL CONSTRUCTION METHODS ARE UTILIZED, TO BE REVIEWED AND APPROVED BY THE MUNICIPAL CONSTRUCTION CODE OFFICIAL. IF AND WHERE SUMP PUMPS ARE INSTALLED, ALL DISCHARGES MUST BE CONNECTED TO THE STORM SEWER. A CLEANOUT MUST BE PROVIDED PRIOR TO THE CONNECTION TO THE STORM DRAIN IN ORDER THAT BLOCKAGES CAN BE ADDRESSED.

FOR SINGLE AND TWO-FAMILY RESIDENTIAL PROJECTS, WHERE THE PROPOSED DWELLING AND ADJACENT SPOT ELEVATIONS ARE SCHEMATIC FOR GENERIC BUILDING FOOTPRINT, GRADES MUST BE ADJUSTED BASED ON FINAL ARCHITECTURAL PLANS TO PROVIDE A MINIMUM OF SIX (6) INCHES BELOW TOP OF BLOCK AND/OR SIX (6) INCHES BELOW SIDING, WHICHEVER IS LOWER, AND MUST PROVIDE POSITIVE DRAINAGE (2% MIN) AWAY FROM DWELLING. ALL CONSTRUCTION, INCLUDING GRADING, MUST COMPLY WITH THE LATEST LOCAL AND STATE BUILDING CODE AND ALL OTHER APPLICABLE REQUIREMENTS, RULES, STATUTES, LAWS, ORDINANCES AND CODES.

GENERAL DEMOLITION NOTES

- THIS PLAN REFERENCES DOCUMENTS AND INFORMATION BY:

- ABBREVIATED NOTICE OF RESOURCE AREA DELINEATION, PREPARED BY CONTROL POINT ASSOCIATES, INC., DATE: 08/29/18, REVISED 01/02/2019.

CONTRACTOR SHALL PERFORM ALL WORK IN ACCORDANCE WITH THE REQUIREMENTS OF THE OCCUPATIONAL SAFETY AND HEALTH ACT OF 1970, (29 U.S.C. § 651 et seq.), AS AMENDED AND ANY MODIFICATIONS, AMENDMENTS OR REVISIONS TO SAME.

BOHLER ENGINEERING HAS NO CONTRACTUAL, LEGAL, OR OTHER RESPONSIBILITY FOR JOB SITE SAFETY OR JOB SITE SUPERVISION, OR ANYTHING RELATED TO SAME.

THE DEMOLITION PLAN IS INTENDED TO PROVIDE GENERAL INFORMATION, ONLY. REGARDING ITEMS TO BE DEMOLISHED AND/OR REMOVED, THE CONTRACTOR MUST ALSO REVIEW THE OTHER SITE PLAN DRAWINGS AND INCLUDE IN DEMOLITION ACTIVITIES ALL INCIDENTAL WORK NECESSARY FOR THE CONSTRUCTION OF THE NEW SITE IMPROVEMENTS.

- CONTRACTOR MUST RAISE ANY QUESTIONS CONCERNING THE ACCURACY OR INTENT OF THESE PLANS OR SPECIFICATIONS, CONCERNS REGARDING THE APPLICABLE SAFETY STANDARDS, OR THE SAFETY OF THE CONTRACTOR OR THIRD PARTIES IN PERFORMING THE WORK ON THIS PROJECT, WITH BOHLER ENGINEERING, IN WRITING, AND RESPONDED TO BY BOHLER, IN WRITING, PRIOR TO THE INITIATION OF ANY SITE ACTIVITY AND ANY DEMOLITION ACTIVITY. ALL DEMOLITION ACTIVITIES MUST BE PERFORMED IN ACCORDANCE WITH THE REQUIREMENTS OF THESE PLANS AND SPECIFICATIONS AND ALL APPLICABLE FEDERAL, STATE AND LOCAL REGULATIONS, RULES, REQUIREMENTS, STATUTES, ORDINANCES AND CODES.

PRIOR TO STARTING ANY DEMOLITION, CONTRACTOR IS RESPONSIBLE FOR TO:

A. OBTAINING ALL REQUIRED PERMITS AND MAINTAINING THE SAME ON SITE FOR REVIEW BY THE ENGINEER AND OTHER PUBLIC AGENCIES WITH JURISDICTION THROUGHOUT THE DURATION OF THE PROJECT, SITE WORK, AND DEMOLITION WORK.

B. NOTIFYING, AT A MINIMUM, THE MUNICIPAL ENGINEER, DESIGN ENGINEER, AND LOCAL SOIL CONSERVATION DISTRICT, 72 HOURS PRIOR TO THE START OF WORK.

C. INSTALLING THE REQUIRED SOIL EROSION AND SEDIMENT CONTROL MEASURES PRIOR TO SITE DISTURBANCE.

D. IN ACCORDANCE WITH STATE LAW, THE CONTRACTOR MUST CALL THE STATE ONE-CALL DAMAGE PROTECTION SYSTEM FOR UTILITY MARKOUT, IN ADVANCE OF ANY EXCAVATION.

E. LOCATING AND PROTECTING ALL UTILITIES AND SERVICES, INCLUDING BUT NOT LIMITED TO GAS, WATER, ELECTRIC, SANITARY AND STORM SEWER, TELEPHONE, CABLE, FIBER OPTIC CABLE, ETC. WITHIN AND ADJACENT TO THE LIMITS OF PROJECT ACTIVITIES. THE CONTRACTOR MUST USE AND COMPLY WITH THE REQUIREMENTS OF THE APPLICABLE UTILITY NOTIFICATION SYSTEM TO LOCATE ALL THE UNDERGROUND UTILITIES.

F. PROTECTING AND MAINTAINING IN OPERATION, ALL ACTIVE UTILITIES AND SYSTEMS THAT ARE NOT BEING REMOVED DURING ALL DEMOLITION ACTIVITIES.

G. ARRANGING FOR AND COORDINATING WITH THE APPLICABLE UTILITY SERVICE PROVIDER(S) FOR THE TEMPORARY OR PERMANENT TERMINATION OF SERVICE REQUIRED BY THE PROJECT PLANS AND SPECIFICATIONS. THE CONTRACTOR MUST PROVIDE THE UTILITY ENGINEER AND OWNER WRITTEN NOTIFICATION THAT THE EXISTING UTILITIES AND SERVICES HAVE BEEN TERMINATED AND ABANDONED IN ACCORDANCE WITH JURISDICTIONAL AND UTILITY COMPANY REQUIREMENTS.

H. COORDINATION WITH UTILITY COMPANIES REGARDING WORKING "OFF-PEAK" HOURS OR ON WEEKENDS AS MAY BE REQUIRED TO MINIMIZE THE IMPACT ON THE AFFECTED PARTIES. WORK REQUIRED TO BE DONE "OFF-PEAK" IS TO BE DONE AT NO ADDITIONAL COST TO THE OWNER.

I. IN THE EVENT THE CONTRACTOR DISCOVERS ANY HAZARDOUS MATERIAL, THE REMOVAL OF WHICH IS NOT ADDRESSED IN THE PROJECT PLANS AND SPECIFICATIONS, THE CONTRACTOR MUST IMMEDIATELY CEASE ALL WORK AND IMMEDIATELY NOTIFY THE OWNER AND ENGINE



REVISIONS			
REV	DATE	COMMENT	B'Y
1			
2			
3			
4			
5			
6			
7			
8			
9			
10			
11			
12			
13			
14			
15			


PROJECT No.:	W181222
DRAWN BY:	AJY
CHECKED BY:	JA
DATE:	01/28/2022
SCALE:	AS NOTE
CAD I.D.:	W181228_SS0_PRELIMSU

CAPITAL GROUP
PROPERTIES

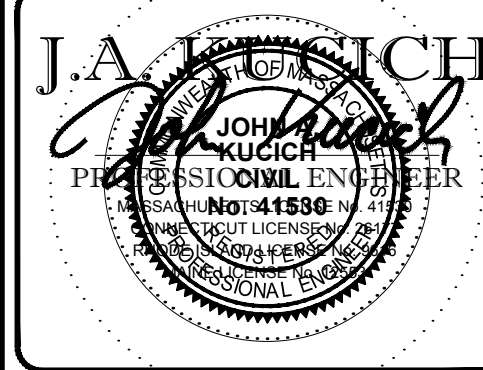
McGOVERN BOULEVARD
EXTENSION

LOCATION OF SITE

McGOVERN BOULEVARD
TOWN OF LANCASTER
WORCESTER COUNTY,
MASSACHUSETTS

 **BOHLER**
ENGINEERING

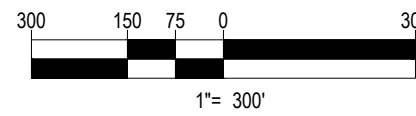
352 TURNPIKE ROAD
SOUTHBOROUGH, MA 01772
Phone: (508) 480-9900
Fax: (508) 480-9080
www.BohlerEngineering.com



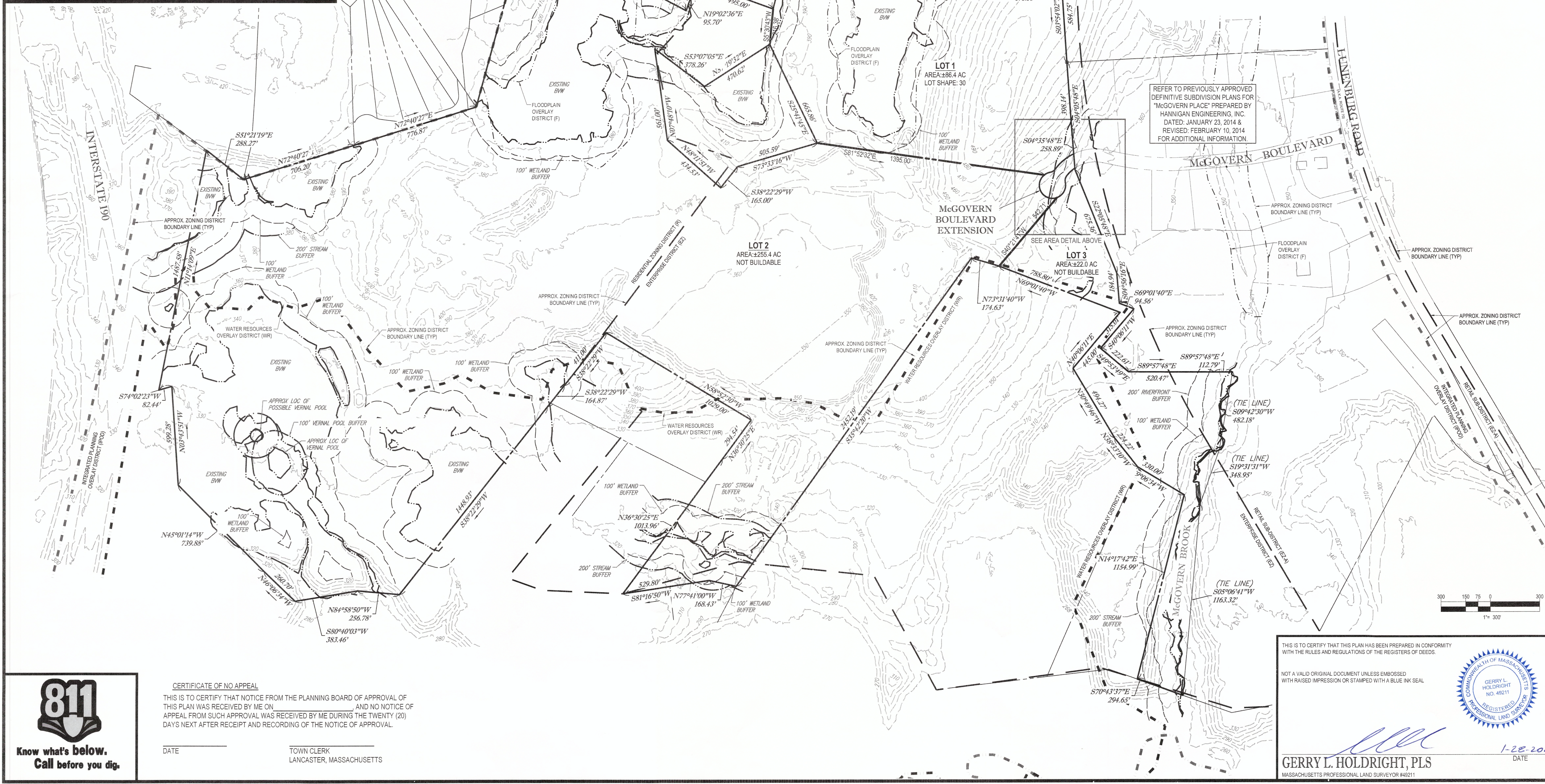
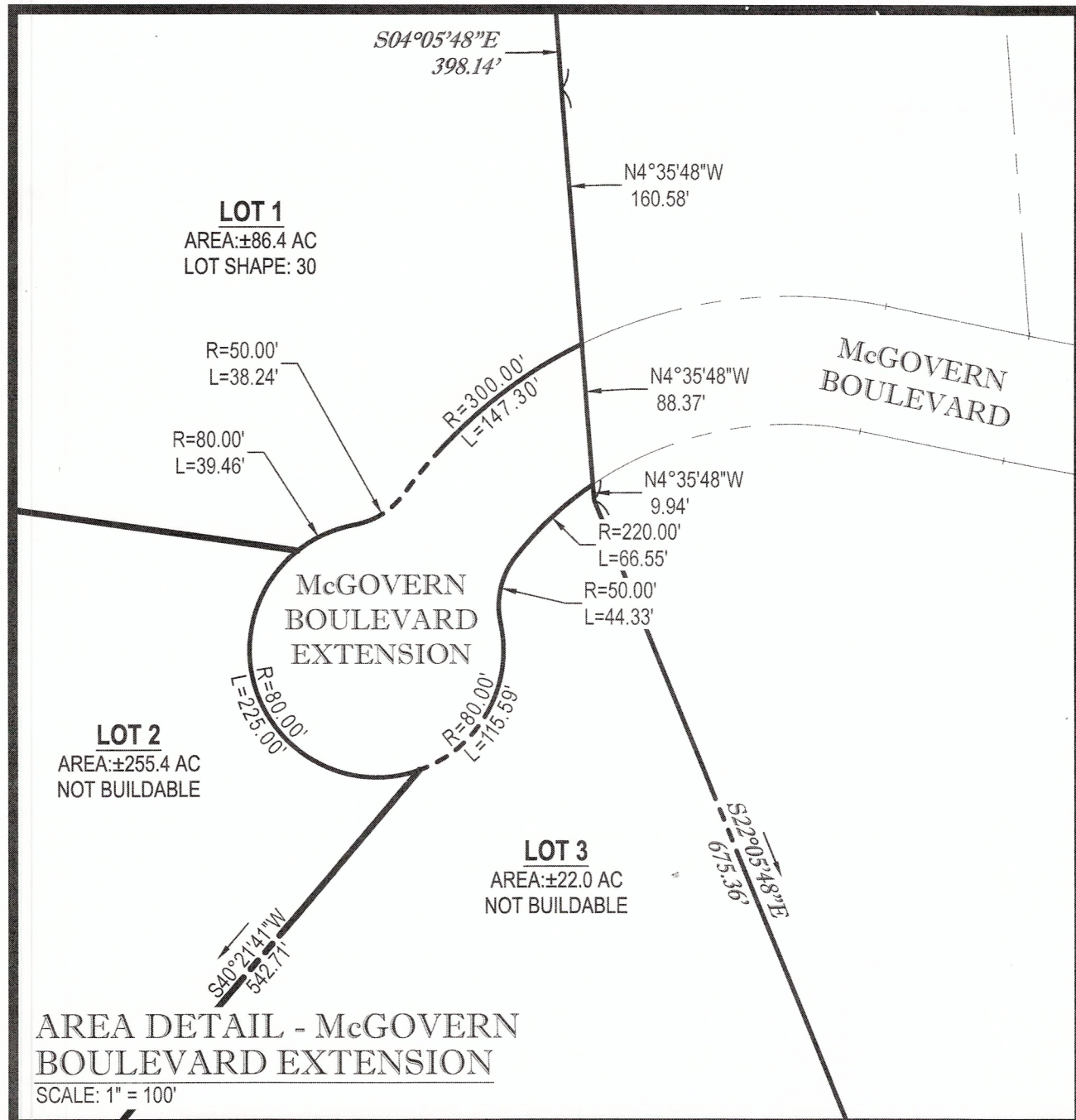
SHEET TITLE: **ABUTTING
PROPERTY
PLAN**

SHEET NUMBER: 3 OF 6

REV 0 - 01/28/2020



P:\18\181226 Drawings\Plan Set\05 Prelim Subdiv\181226_05_PrelimSub.dwg, 04-Overall Site, 10/02/2014, 4:28:00 PM, mshelmer, Xerox 510 10560M, User02, 1:20



APPROVAL UNDER THE SUBDIVISION
CONTROL LAW REQUIRED

TOWN OF LANCASTER PLANNING BOARD

CHAIRMAN

DATE

LAND USE / ZONING INFORMATION & NOTES

- OWNER / APPLICANT:
720 LLC
299 TURNPIKE ROAD, SUITE 100
SOUTHBOROUGH, MA 01772
- PARCEL(S):
MAP 8: LOTS 39C, 42 & 45
MAP 9: LOTS 2, 5 & 8A
MAP 13: LOTS 2, 3, 4, 7 & 8
MAP 14: LOTS 1, 2, 3, 4A, 3B, 8B, 9D, 11A, 12 & 13, PARCEL B-2 & PARCEL B-4

ZONING ANALYSIS TABLE

ZONING DISTRICT	INTEGRATED PLANNING OVERLAY DISTRICT (POD)			
	REQUIRED	LOT 1	LOT 2	LOT 3
MINIMUM LOT AREA - RESIDENTIAL (R)	2 AC	±86.4 AC	±225.4 AC	±22.0 AC
MINIMUM LOT FRONTAGE - ALL DISTRICTS	225'	225'	225'	225.47'
MAX. BUILDING COVERAGE	-	N/A	N/A	N/A
LOT SHAPE LOTS IN EXCESS OF 80,000 SF	30	30	NOT BUILDABLE	NOT BUILDABLE
MIN. FRONT SETBACK - COLLECTOR ST	60'	N/A	N/A	N/A
MIN. SIDE SETBACK	20'	N/A	N/A	N/A
MIN. REAR SETBACK	20'	N/A	N/A	N/A

N/A - NOT APPLICABLE
N/S - NOT SPECIFIED
(V) - VARIANCE REQUESTED
(W) - WAIVER REQUESTED
(E) - EXISTING NON-CONFORMANCE
(1) -

BOHLER ENGINEERING

SITE CIVIL AND CONSULTING ENGINEERING
LAND SURVEYING PROGRAM MANAGEMENT LANDSCAPE ARCHITECTURE
SUSTAINABLE DESIGN PERMITTING SERVICES TRANSPORTATION SERVICES

NEW YORK
NEW JERSEY
NEW HAMPSHIRE
MASSACHUSETTS
CONNECTICUT
VIRGINIA
FLORIDA
ALABAMA
LOUISIANA
MISSISSIPPI
ARKANSAS
OKLAHOMA
KANSAS
NEBRASKA
MINNESOTA
IOWA
MICHIGAN
INDIANA
ILLINOIS
OHIO
PENNSYLVANIA
DELAWARE
MARYLAND
DISTRICT OF COLUMBIA
WASHINGTON, DC

REVISIONS			
REV	DATE	COMMENT	BY
1			
2			
3			
4			
5			
6			
7			
8			
9			
10			
11			
12			
13			
14			
15			

PRELIMINARY PLAN

PROJECT No.: W181228
DRAWN BY: AJS
CHECKED BY: JAK
DATE: 01/28/2020
SCALE: AS NOTED
CAD I.D.: W181228_S50_PRELIMSUB

PRELIMINARY SUBDIVISION PLANS FOR

CAPITAL GROUP

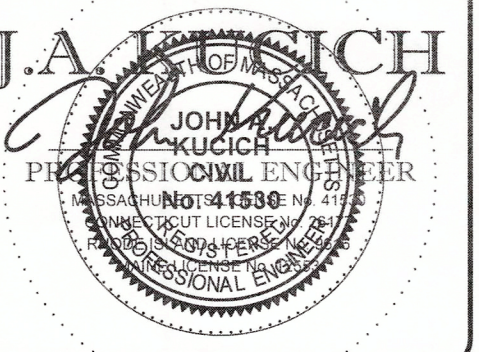
McGOVERN BOULEVARD
EXTENSION

LOCATION OF SITE

McGOVERN BOULEVARD
TOWN OF LANCASTER
WORCESTER COUNTY,
MASSACHUSETTS

BOHLER ENGINEERING

352 TURNPIKE ROAD
SOUTHBOROUGH, MA 01772
Phone: (508) 480-9900
Fax: (508) 480-9900
www.BohlerEngineering.com



OVERALL PRELIMINARY SUBDIVISION PLAN

SHEET NUMBER: 4
OF 6

REV 0 - 01/28/2020

CERTIFICATE OF NO APPEAL

THIS IS TO CERTIFY THAT NOTICE FROM THE PLANNING BOARD OF APPROVAL OF THIS PLAN WAS RECEIVED BY ME ON _____ AND NO NOTICE OF APPEAL FROM SUCH APPROVAL WAS RECEIVED BY ME DURING THE TWENTY (20) DAYS NEXT AFTER RECEIPT AND RECORDING OF THE NOTICE OF APPROVAL.

DATE

TOWN CLERK
LANCASTER, MASSACHUSETTS



Know what's below.
Call before you dig.

THIS IS TO CERTIFY THAT THIS PLAN HAS BEEN PREPARED IN CONFORMITY WITH THE RULES AND REGULATIONS OF THE REGISTERS OF DEEDS.

NOT A VALID ORIGINAL DOCUMENT UNLESS EMBOSSED WITH RAISED IMPRESSION OR STAMPED WITH A BLUE INK SEAL



GERRY L. HOLDRIGHT, PLS
MASSACHUSETTS PROFESSIONAL LAND SURVEYOR #4921

1-28-2020
DATE



LOT 2
AREA: ±255.4 AC
NOT BUILDABLE

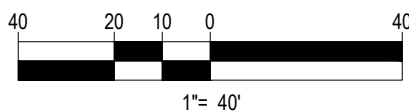
LOT 3
AREA:±22.0 AC
NOT BUILDABLE

APPROX. EXIST. EOP PER PRELIMINARY SUBDIVISION PLAN IN
LANCASTER, MA PREPARED BY HANNIGAN ENGINEERING, INC.
JANUARY 10, 2014 & REVISED JANUARY 28, 2014.

McGOVERN
BOULEVARD

RETAIL SUBDISTRICT (E2A)
[REDACTED]
HOUSE DISTRICT (E)

THIS PLAN TO BE UTILIZED FOR SITE
LAYOUT PURPOSES ONLY



PRELIMINARY PLAN

PROJECT No.:	W181228
DRAWN BY:	AJS
CHECKED BY:	JAK
DATE:	01/28/2020
SCALE:	AS NOTED
CADD 181228 SS0 PRELIM SUB SITE & GRAD	


PRELIMINARY
SUBDIVISION
PLANS
—FOR—

CAPITAL GROUP
PROPERTIES

McGOVERN BOULEVARD
EXTENSION

LOCATION OF SITE

McGOVERN BOULEVARD
TOWN OF LANCASTER
WORCESTER COUNTY,
MASSACHUSETTS

 **BOHLER**
ENGINEERING

352 TURNPIKE ROAD
SOUTHBOROUGH, MA 01772

Phone: (508) 480-9900
Fax: (508) 480-9080

www.BohlerEngineering.com



SHEET TITLE: PRELIMINARY
PRELIMINARY
SITE PLAN
SHEET NUMBER:
5
OF 6
REV 0 - 01/28/2020



**Know what's below.
Call before you dig.**

