

**LIGHTING SCHEDULE**

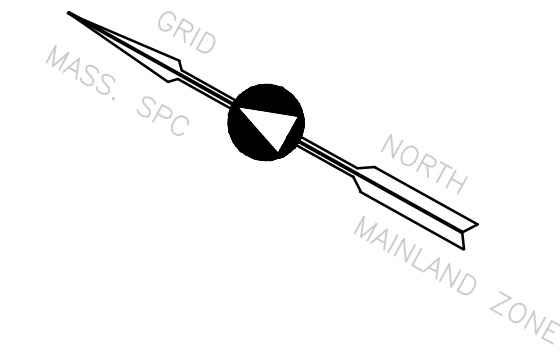
Symbol	Qty	Label	Arrangement	LLF	Luminaire Lumens	Luminaire Watts
	4	ASPEN12 32W 3K TYPE IV	Single	0.970	3143	35.45

**Luminaire Location Summary**

LumNo	Label	Insertion Point			Orient	Tilt
		X	Y	Z		
1	ASPEN12 32W 3K TYPE IV	609712.797	2990024.681	14	21.994	0
2	ASPEN12 32W 3K TYPE IV	609728.783	2989971.568	14	19.403	0
3	ASPEN12 32W 3K TYPE IV	609726.966	2989946.311	14	291.494	0
4	ASPEN12 32W 3K TYPE IV	609684.691	2989930.823	14	292.66	0

**LIGHTING NOTES**

1. CALCULATIONS SHOWN HERE ARE BASED ON A 14' MOUNTING HEIGHT.
2. CONTRACTOR TO SUBMIT PROPOSED LIGHTING FIXTURE SPECIFICATIONS TO LOCAL INSPECTOR TO ENSURE COMPLIANCE WITH THIS PLAN.



PROJECT NAME:

# NECK FARM

PROJECT ADDRESS:

13 Neck Road  
Lancaster, Massachusetts 01523

PREPARED FOR:

Neck Farm, LLC

66 West Street, Ste 1F  
Leominster, Massachusetts 01453

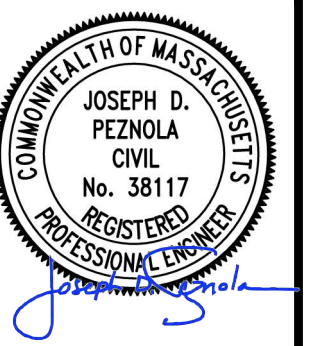
## HANCOCK ASSOCIATES

Civil Engineers

Land Surveyors

Environmental Consultants

34 CHELMSFORD STREET, CHELMSFORD, MA 01824  
VOICE (978) 244-0110, FAX (978) 244-1133  
WWW.HANCOCKASSOCIATES.COM



**FIXTURE SPECIFICATION**

AREA LIGHTING | WALL MOUNT

**ASPEN12 SERIES**

**FEATURES + BENEFITS**

- Industry leading LED systems
- High efficiency & energy savings
- Environmentally friendly
- Reliable & low-maintenance
- 5-year limited warranty
- UL Listed electrical components
- Suitable for wet conditions

**SPECIFICATIONS**

LUMINAIRE: All aluminum construction

LIGHT SOURCE: 32W LED 3000K

DRIVER: Electronic LED Driver, 120V-277V, 480V Available.  
Dimming Leads Optional 0-10V

DIFFUSER: Injection molded lens

OPTICS: Type III

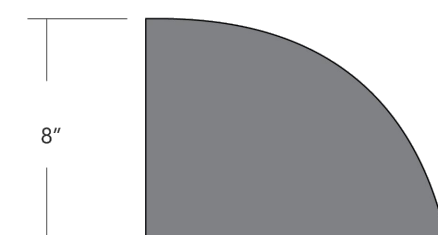
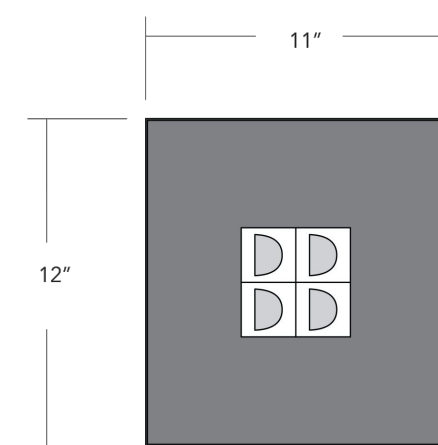
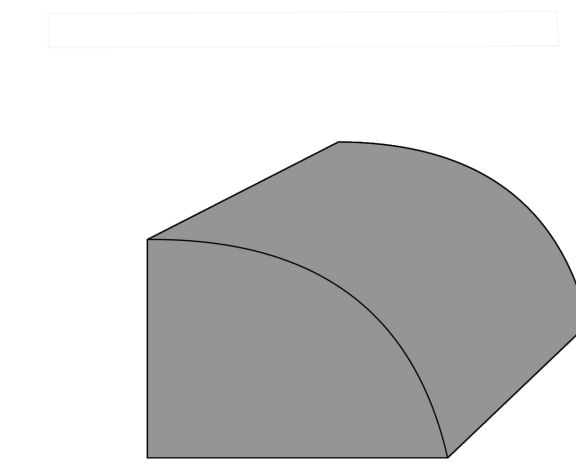
OPTIONS: N/A

ARM: N/A

POLE: N/A

ANCHOR BOLTS: N/A

FINISH: Powder coat. Standard colors are Black, White, Dark Bronze, and Silver.  
Custom Colors and RAL Colors Available. Consult Factory  
All exposed hardware shall be stainless steel.

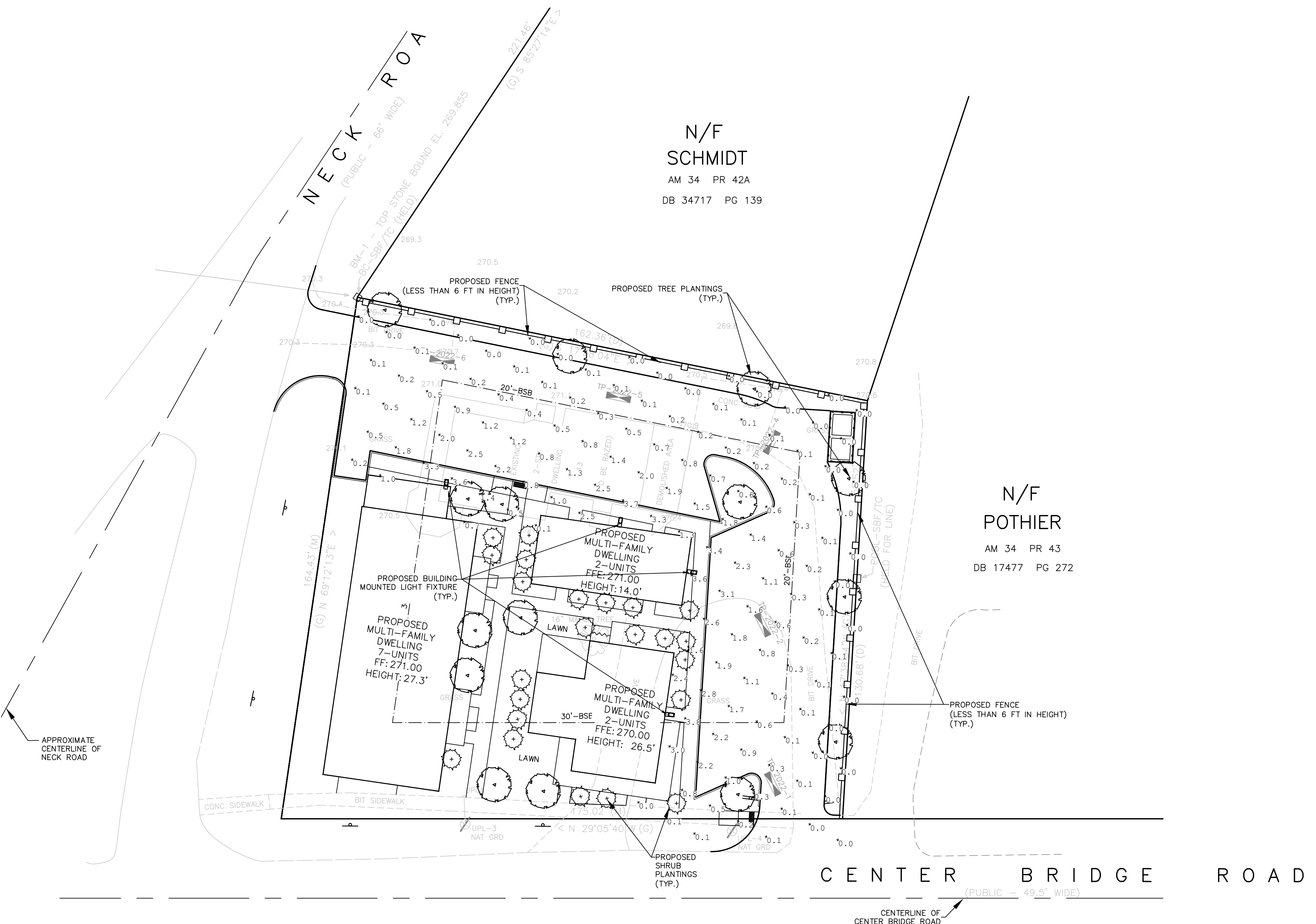


CATALOG # ASPEN12-32W-3K-SMT-TYPE III-COLOR

APPROVED BY \_\_\_\_\_ DATE: \_\_\_\_\_

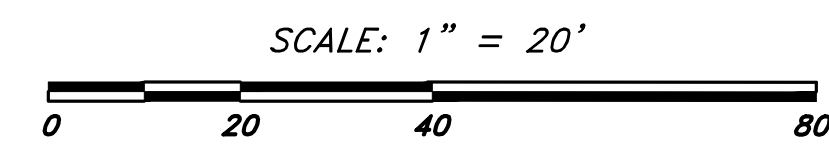


Ph.: +1-323-890-9008 5618 E. Washington Blvd.  
Fax: +1-323-890-1981 Commerce, CA 90040  
Email: info@echohg.com www.echohg.com



APPROXIMATE CENTERLINE OF NECK ROAD

CENTER BRIDGE ROAD



NO.	BY	APP	DATE	ISSUE/REVISION	DESCRIPTION

DATE: 4/11/24 DESIGN BY: RT  
SCALE: AS SHOWN DRAWN BY: RT  
CHECK BY: JP CHECK BY: BG

### LIGHTING PLAN

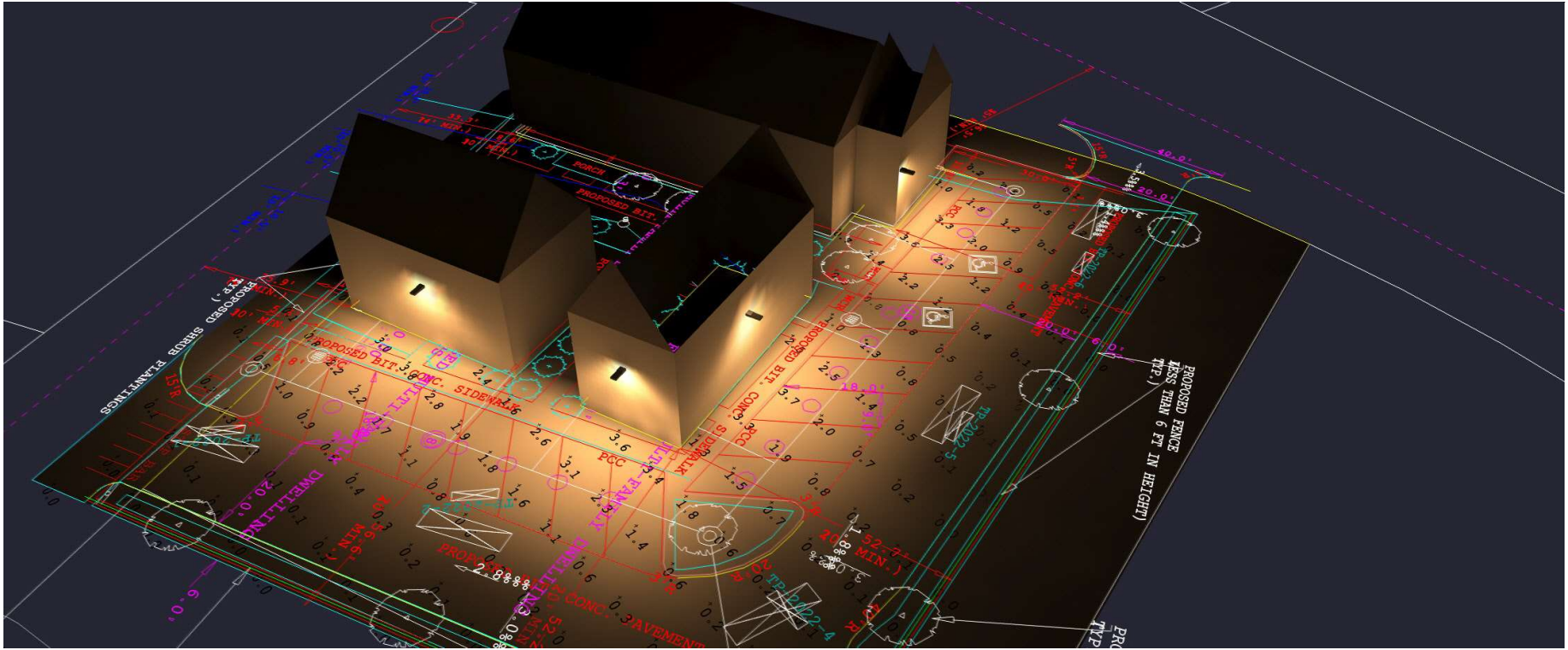
DWG: 24939-eng.dwg

LAYOUT: LIGHT

SHEET: 1 OF 1

JOB NO.: 24939

1

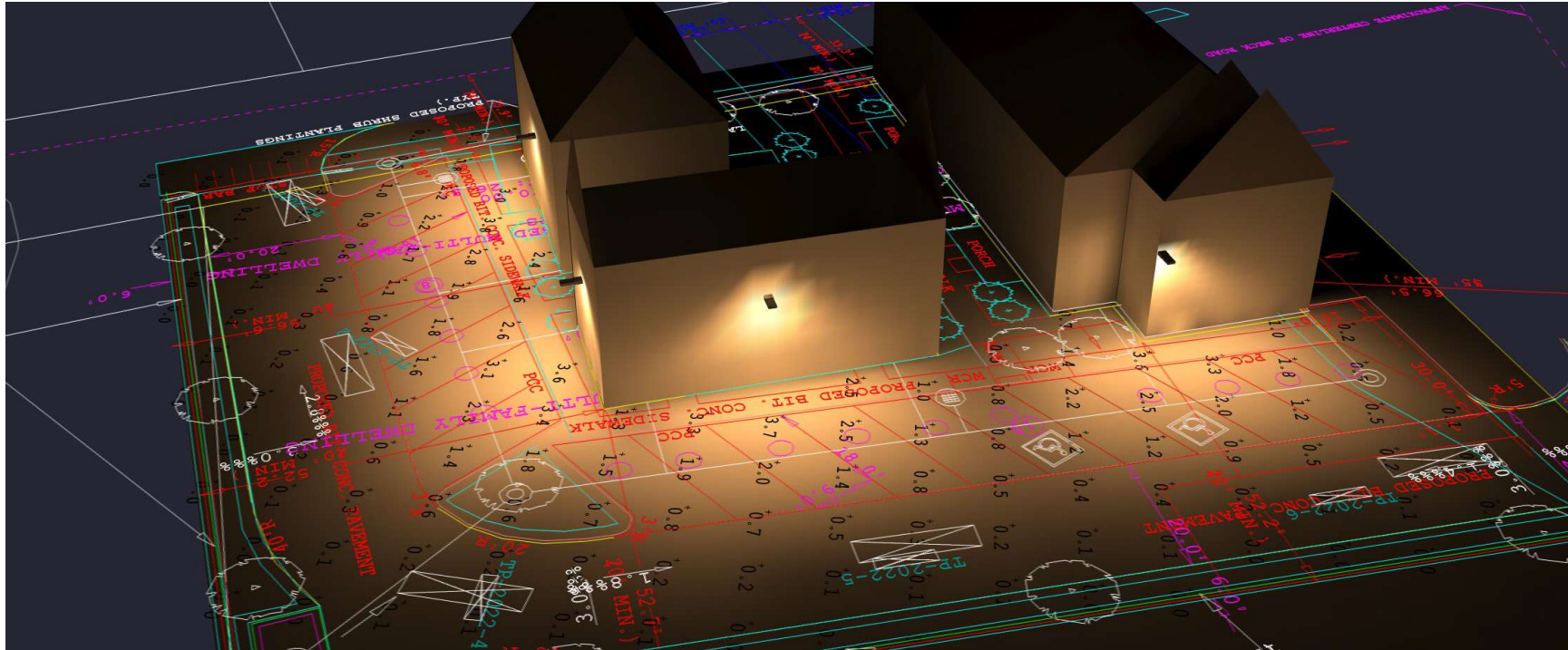


13 Neck Road, Lancaster, MA

**ECHO LIGHTING INC**

5618 EAST WASHINGTON BLVD  
COMMERCE, CA 90040





**13 Neck Road, Lancaster, MA**

**ECHO LIGHTING INC**  
 5618 EAST WASHINGTON BLVD  
 COMMERCE, CA 90040

