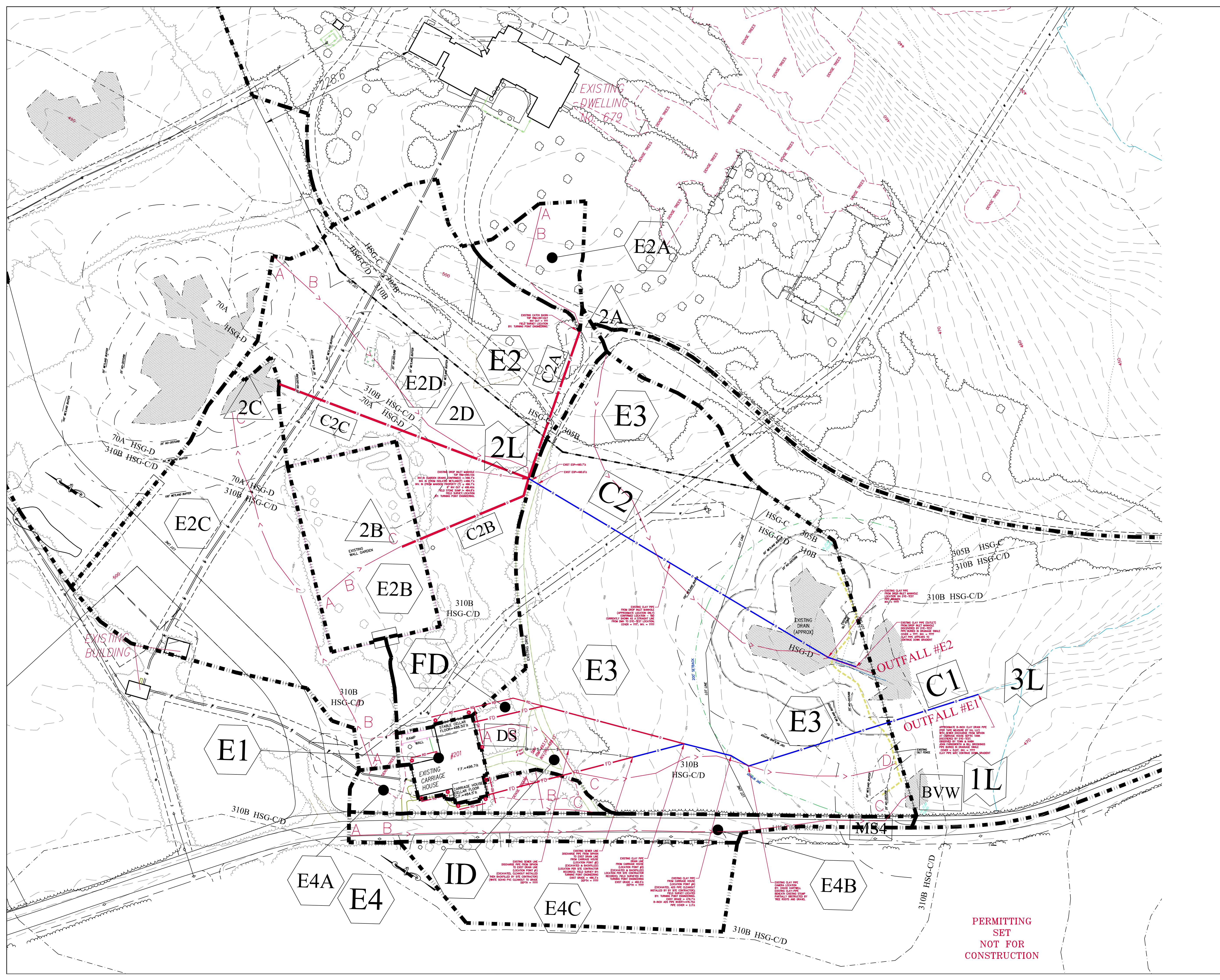


- NOTES:
1. PROPERTY LINE, TOPOGRAPHY AND EXISTING CONDITIONS INFORMATION PROVIDED BY DILLIS & ROY CIVIL DESIGN GROUP, INC.
 2. WETLAND DELINEATION BY B&C ASSOCIATES, INC. ON JUNE 17, 2021.
 3. STUMP AND WETLAND FLAG LOCATION BY TURNING POINT ENGINEERING ON JUNE 17, 2021 & SEPTEMBER 1, 2021. LEC WETLAND FLAG SURVEY LOCATION PERFORMED ON 10/5/21.
 4. BASE SURVEY INFORMATION, WETLAND DELINEATIONS, BUFFER ZONES; PROVIDED BY TURNING POINT ENGINEERING; SUTTON, MA.; www.tpecivildesign.com



REVISIONS	
REV.	DESCRIPTION
1.	12.3.21 WATERSHED UPDATES
2.	12.6.21 STORMWATER CONTROL BYLAW - 60 SCALE

TITLE

EXISTING WATERSHED MAP
201 HILL TOP ROAD, LANCASTER, MA

PREPARED FOR: LORING
DATE: 11.9.2021 (INTERIM)
SCALE: 1" = 60'

HARRINGTON ASSOCIATES, LLC
ENGINEERING | PLANNING | DEVELOPMENT
20 MAIN STREET, WEDGEWOOD OFFICES SUITE 9
ACTON, MA 01720, TEL: (978) 989-1373
EMAIL: rjharrington4@gmail.com

NOI-PRE.dwg HA-95

PERMITTING
SET
NOT FOR
CONSTRUCTION

