



**TURNING POINT ENGINEERING**  
CIVIL SITE DESIGN

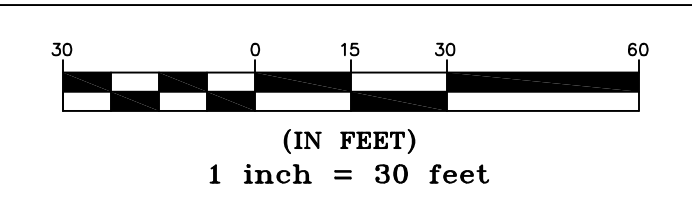
P.O. Box 757 • Sutton, MA 01590  
P:(508) 381-1515 F:(508) 647-0189  
www.tpecivildesign.com

**NOTES:**  
1. PROPERTY LINE, TOPOGRAPHY AND EXISTING CONDITIONS INFORMATION PROVIDED BY DILLIS & ROY CIVIL DESIGN GROUP, INC.  
2. WETLAND DELINEATION BY B&C ASSOCIATES, INC. ON JUNE 17, 2021.  
3. STUMP AND WETLAND FLAG LOCATION BY TURNING POINT ENGINEERING ON JUNE 17, 2021 & SEPTEMBER 1, 2021.

**LEGEND**

- I.R. IRON ROD
- S.F. SQUARE FEET
- STUMP
- - - 478 - - - EXISTING INTERMEDIATE CONTOUR
- - - 480 - - - EXISTING INDEX CONTOUR
- STONEWALL
- WF1 WETLAND FLAG
- WP WHITE PINE
- RO RED OAK
- RM RED MAPLE
- B BEECH
- BB BLACK BIRCH
- EH EASTERN HEMLOCK
- PH PIGNUT HICKORY

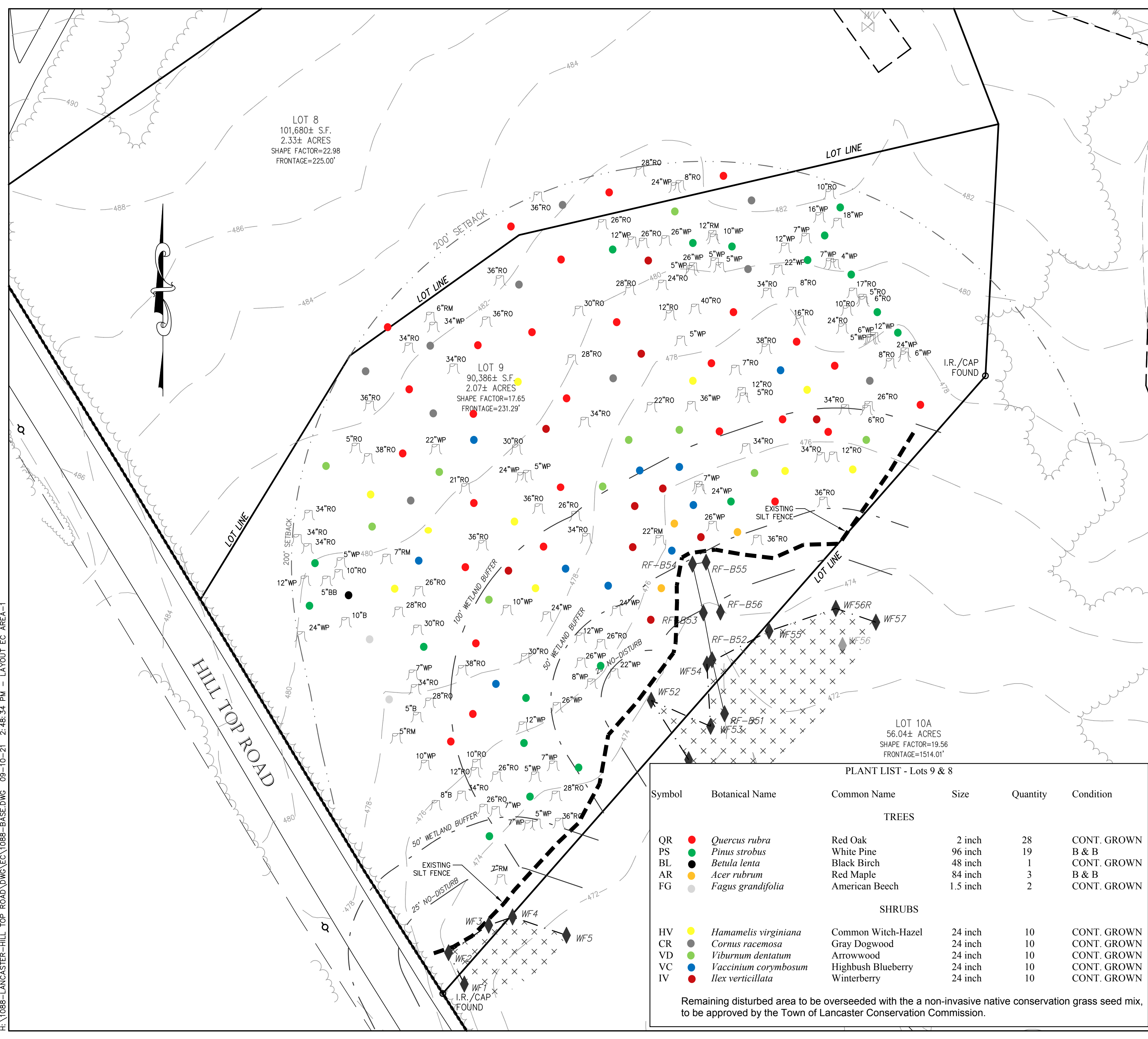
**GRAPHIC SCALE**



CAD FILE	1088-BASE.dwg
DRAWN BY	OCR
CHECKED BY	TRB
DATE	JUNE 18, 2021, REV. 7/22/21 & 9/10/21
PROJECT NO.	TPE-1088
PLAN NO.	M-246

**TITLE**

**EXISTING CONDITIONS  
PLAN  
ON  
HILL TOP ROAD  
IN  
LANCASTER, MA  
PREPARED FOR  
B&C ASSOCIATES, INC.  
Revised September 12, 2021 - Restoration Plantings**



**PLANT LIST - Lots 9 & 8**

Symbol	Botanical Name	Common Name	Size	Quantity	Condition
<b>TREES</b>					
QR	<i>Quercus rubra</i>	Red Oak	2 inch	28	CONT. GROWN
PS	<i>Pinus strobus</i>	White Pine	96 inch	19	B & B
BL	<i>Betula lenta</i>	Black Birch	48 inch	1	CONT. GROWN
AR	<i>Acer rubrum</i>	Red Maple	84 inch	3	B & B
FG	<i>Fagus grandifolia</i>	American Beech	1.5 inch	2	CONT. GROWN
<b>SHRUBS</b>					
HV	<i>Hamamelis virginiana</i>	Common Witch-Hazel	24 inch	10	CONT. GROWN
CR	<i>Cornus racemosa</i>	Gray Dogwood	24 inch	10	CONT. GROWN
VD	<i>Viburnum dentatum</i>	Arrowwood	24 inch	10	CONT. GROWN
VC	<i>Vaccinium corymbosum</i>	Highbush Blueberry	24 inch	10	CONT. GROWN
IV	<i>Ilex verticillata</i>	Winterberry	24 inch	10	CONT. GROWN

Remaining disturbed area to be overseeded with the a non-invasive native conservation grass seed mix, to be approved by the Town of Lancaster Conservation Commission.

H:\1088-LANCASTER-HILL\_TOP ROAD\DWG\EC\1088-BASE.DWG 09-10-21 2:48:34 PM - LAYOUT EC AREA-1