



TURNING POINT ENGINEERING

CIVIL SITE DESIGN

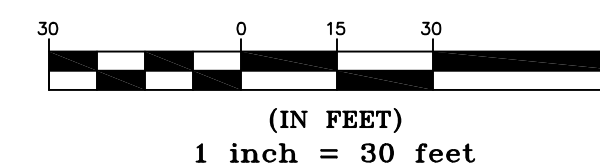
P.O. Box 757 • Sutton, MA 01590
P:(508) 381-1515 F:(508) 647-0189
www.tpecivildesign.com

NOTES:
1. PROPERTY LINE, TOPOGRAPHY AND EXISTING CONDITIONS INFORMATION PROVIDED BY DILLIS & ROY CIVIL DESIGN GROUP, INC.
2. STUMP LOCATION BY TURNING POINT ENGINEERING ON JUNE 17, 2021 & WETLAND FLAG LOCATION ON SEPTEMBER 1, 2021.

LEGEND

- I.R. IRON ROD
- S.F. SQUARE FEET
- STUMP
- 478 --- EXISTING INTERMEDIATE CONTOUR
- 480 --- EXISTING INDEX CONTOUR
- STONEWALL
- WP WHITE PINE
- RO RED OAK
- RM RED MAPLE
- B BEECH
- BB BLACK BIRCH
- EH EASTERN HEMLOCK
- PH PIGNUT HICKORY

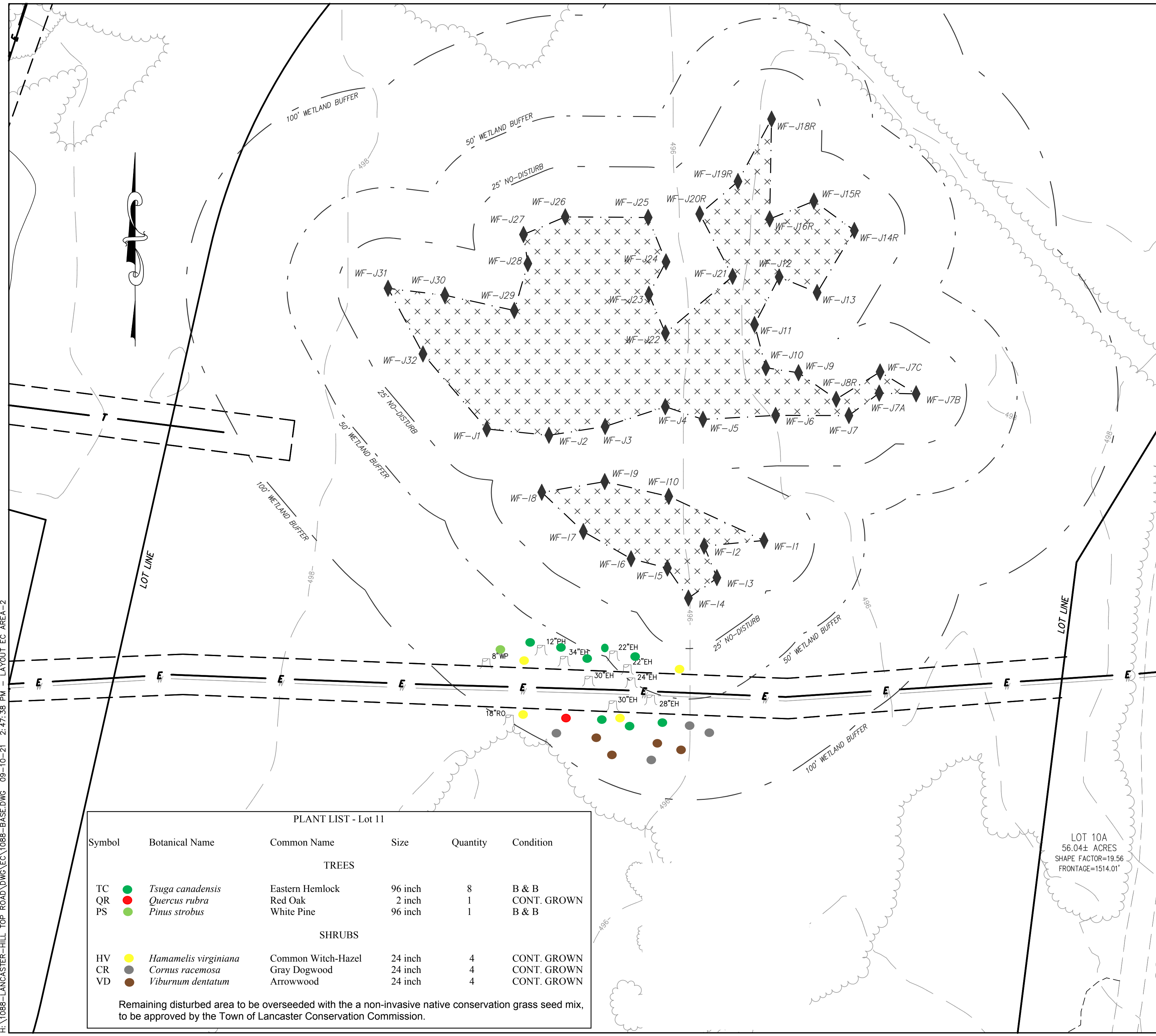
GRAPHIC SCALE



CAD FILE	1088-BASE.dwg
DRAWN BY	OCR
CHECKED BY	TRB
DATE	JUNE 18, 2021, REV. 9/10/21
PROJECT NO.	TPE-1088
PLAN NO.	M-246

TITLE

**EXISTING CONDITIONS
PLAN**
ON
HILL TOP ROAD
IN
LANCASTER, MA
PREPARED FOR
B&C ASSOCIATES, INC.
Revised September 12, 2021 - Restoration Plantings



PLANT LIST - Lot 11

Symbol	Botanical Name	Common Name	Size	Quantity	Condition
TREES					
TC	<i>Tsuga canadensis</i>	Eastern Hemlock	96 inch	8	B & B
QR	<i>Quercus rubra</i>	Red Oak	2 inch	1	CONT. GROWN
PS	<i>Pinus strobus</i>	White Pine	96 inch	1	B & B
SHRUBS					
HV	<i>Hamamelis virginiana</i>	Common Witch-Hazel	24 inch	4	CONT. GROWN
CR	<i>Cornus racemosa</i>	Gray Dogwood	24 inch	4	CONT. GROWN
VD	<i>Viburnum dentatum</i>	Arrowwood	24 inch	4	CONT. GROWN

Remaining disturbed area to be overseeded with the a non-invasive native conservation grass seed mix, to be approved by the Town of Lancaster Conservation Commission.

LOT 10A
56.04± ACRES
SHAPE FACTOR=19.56
FRONTAGE=1514.01'

H:\1088-LANCASTER-HILL_TOP ROAD\DWG\EC\1088-BASE.DWG 09-10-21 2:47:38 PM - LAYOUT EC AREA-2