



TURNING POINT ENGINEERING

CIVIL SITE DESIGN

P.O. Box 757 • Sutton, MA 01590  
P:(508) 381-1515 F:(508) 647-0189  
www.tpecivildesign.com

NOTES:

1. PROPERTY LINE, TOPOGRAPHY AND EXISTING CONDITIONS INFORMATION PROVIDED BY DILLIS & ROY CIVIL DESIGN GROUP, INC.
2. STUMP LOCATION BY TURNING POINT ENGINEERING ON JUNE 17, 2021 & WETLAND FLAG LOCATION ON SEPTEMBER 1, 2021. LEC WETLAND FLAG SURVEY LOCATION PERFORMED ON 10/5/21.

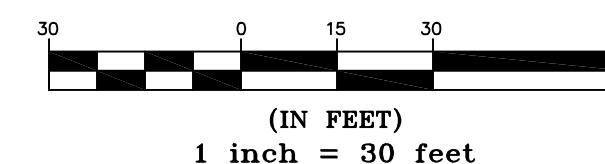
LEGEND

- I.R. IRON ROD
- S.F. SQUARE FEET
- STUMP
- - - 478 - - - EXISTING INTERMEDIATE CONTOUR
- - - 480 - - - EXISTING INDEX CONTOUR
- ○ ○ ○ ○ STONEWALL
- WP WHITE PINE
- RO RED OAK
- RM RED MAPLE
- B BEECH
- BB BLACK BIRCH
- EH EASTERN HEMLOCK
- PH PIGNUT HICKORY

REVISIONS

REV.	DATE	DESCRIPTION
1	9/10/21	ADDITIONAL WETLAND DELINEATION
2	10/6/21	LEC WETLAND DELINEATION

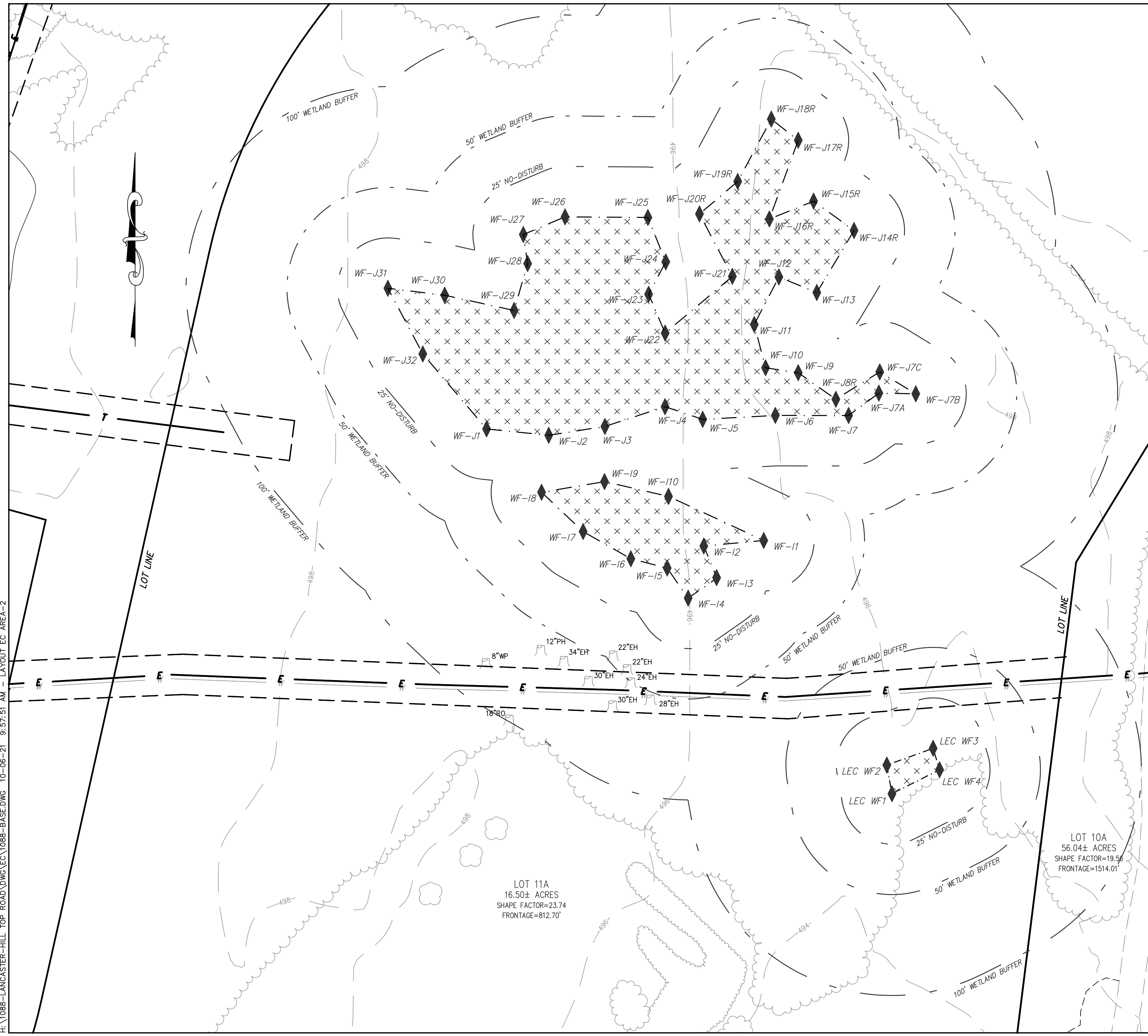
GRAPHIC SCALE



CAD FILE	1088-BASE.dwg
DRAWN BY	OCR
CHECKED BY	TRB
DATE	JUNE 18, 2021
PROJECT NO.	TPE-1088
PLAN NO.	M-246

TITLE

**EXISTING CONDITIONS  
PLAN  
ON  
HILL TOP ROAD  
IN  
LANCASTER, MA  
PREPARED FOR  
B&C ASSOCIATES, INC.**



H:\1088-LANCASTER-HILL\_TOP ROAD\DWG\EC\1088-BASE.DWG 10-06-21 9:57:51 AM - LAYOUT EC AREA-2