



TURNING POINT ENGINEERING

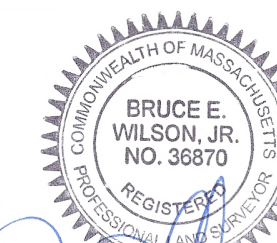
CIVIL SITE DESIGN

P.O. Box 757 • Sutton, MA 01590
P: (508) 381-1515 F: (508) 647-0189
www.tpecivildesign.com

- NOTES:
1. PROPERTY LINE, TOPOGRAPHY AND EXISTING CONDITIONS INFORMATION PROVIDED BY DILLIS & ROY CIVIL DESIGN GROUP, INC.
 2. WETLAND DELINEATION BY B&C ASSOCIATES, INC. ON JUNE 17, 2021.
 3. STUMP AND WETLAND FLAG LOCATION BY TURNING POINT ENGINEERING ON JUNE 17, 2021.

LEGEND

- I.R. IRON ROD
- S.F. SQUARE FEET
- STUMP
- - - 478 - - - EXISTING INTERMEDIATE CONTOUR
- - - 480 - - - EXISTING INDEX CONTOUR
- STONEWALL
- ◇ WF1 WETLAND FLAG
- WP WHITE PINE
- RO RED OAK
- RM RED MAPLE
- B BEECH
- BB BLACK BIRCH
- EH EASTERN HEMLOCK
- PH PIGNUT HICKORY



GRAPHIC SCALE



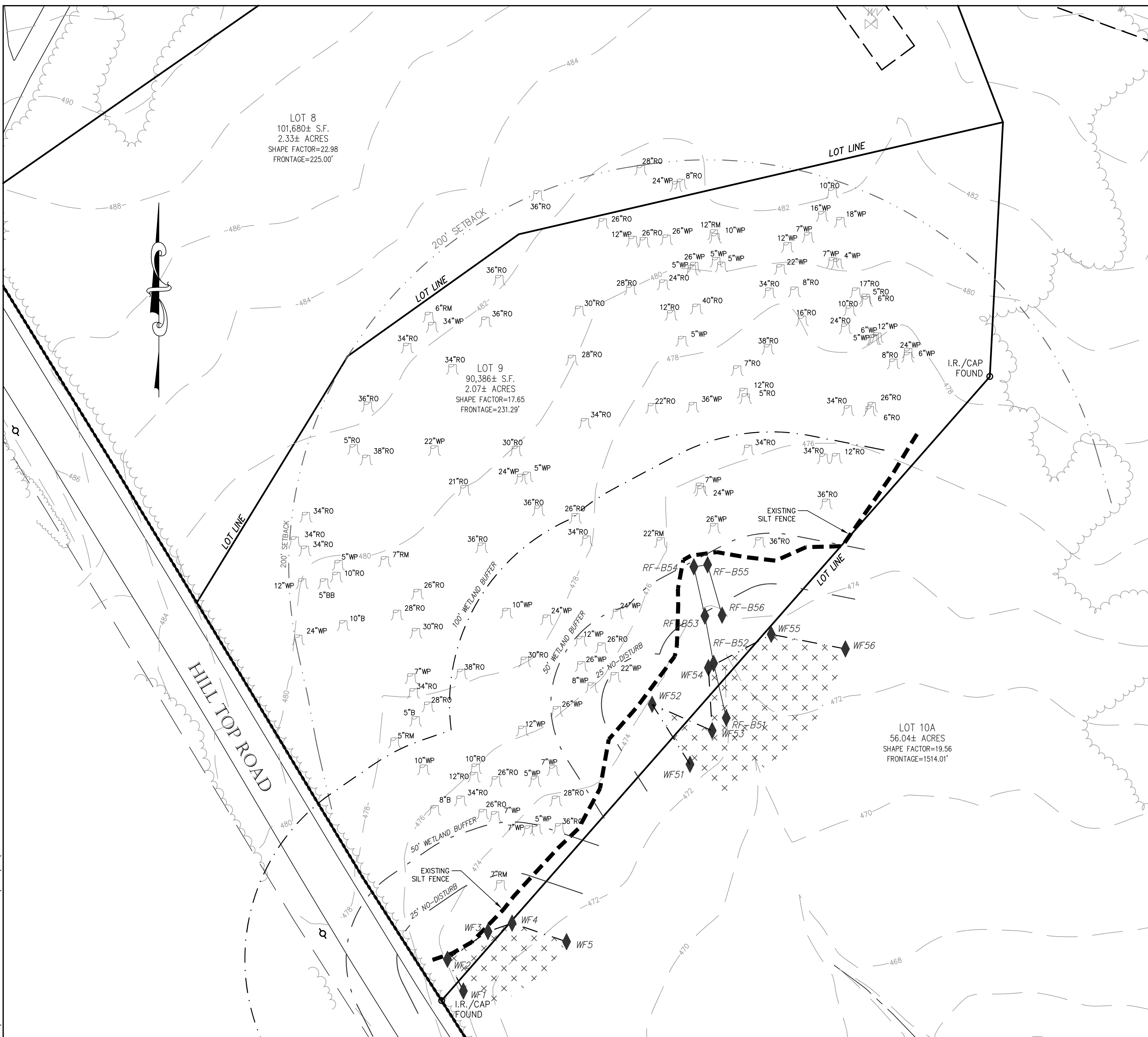
(IN FEET)
1 inch = 30 feet

CAD FILE	1088-BASE.dwg
DRAWN BY	OCR
CHECKED BY	TRB
DATE	JUNE 18, 2021, REV. 7/22/21
PROJECT NO.	TPE-1088
PLAN NO.	M-246

TITLE

EXISTING CONDITIONS
PLAN
ON
HILL TOP ROAD
IN
LANCASTER, MA
PREPARED FOR
B&C ASSOCIATES, INC.

H:\1088-LANCASTER-HILL_TOP ROAD\DWG\EC\1088-BASE.DWG 07-22-21 10:08:03 AM - LAYOUT EC AREA-1





TURNING POINT ENGINEERING

CIVIL SITE DESIGN

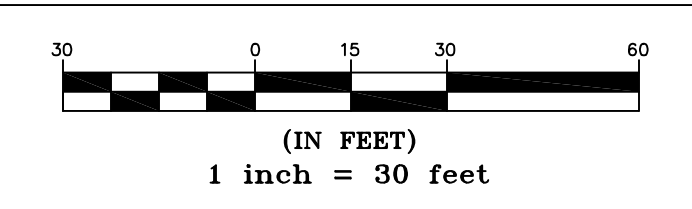
P.O. Box 757 • Sutton, MA 01590
P:(508) 381-1515 F:(508) 647-0189
www.tpecivildesign.com

NOTES:
1. PROPERTY LINE, TOPOGRAPHY AND EXISTING CONDITIONS INFORMATION PROVIDED BY DILLIS & ROY CIVIL DESIGN GROUP, INC.
2. STUMP LOCATION BY TURNING POINT ENGINEERING ON JUNE 17, 2021.

LEGEND

- I.R. IRON ROD
- S.F. SQUARE FEET
- STUMP
- - - 478 - - - EXISTING INTERMEDIATE CONTOUR
- - - 480 - - - EXISTING INDEX CONTOUR
- STONEWALL
- WP WHITE PINE
- RO RED OAK
- RM RED MAPLE
- B BEECH
- BB BLACK BIRCH
- EH EASTERN HEMLOCK
- PH PIGNUT HICKORY

GRAPHIC SCALE

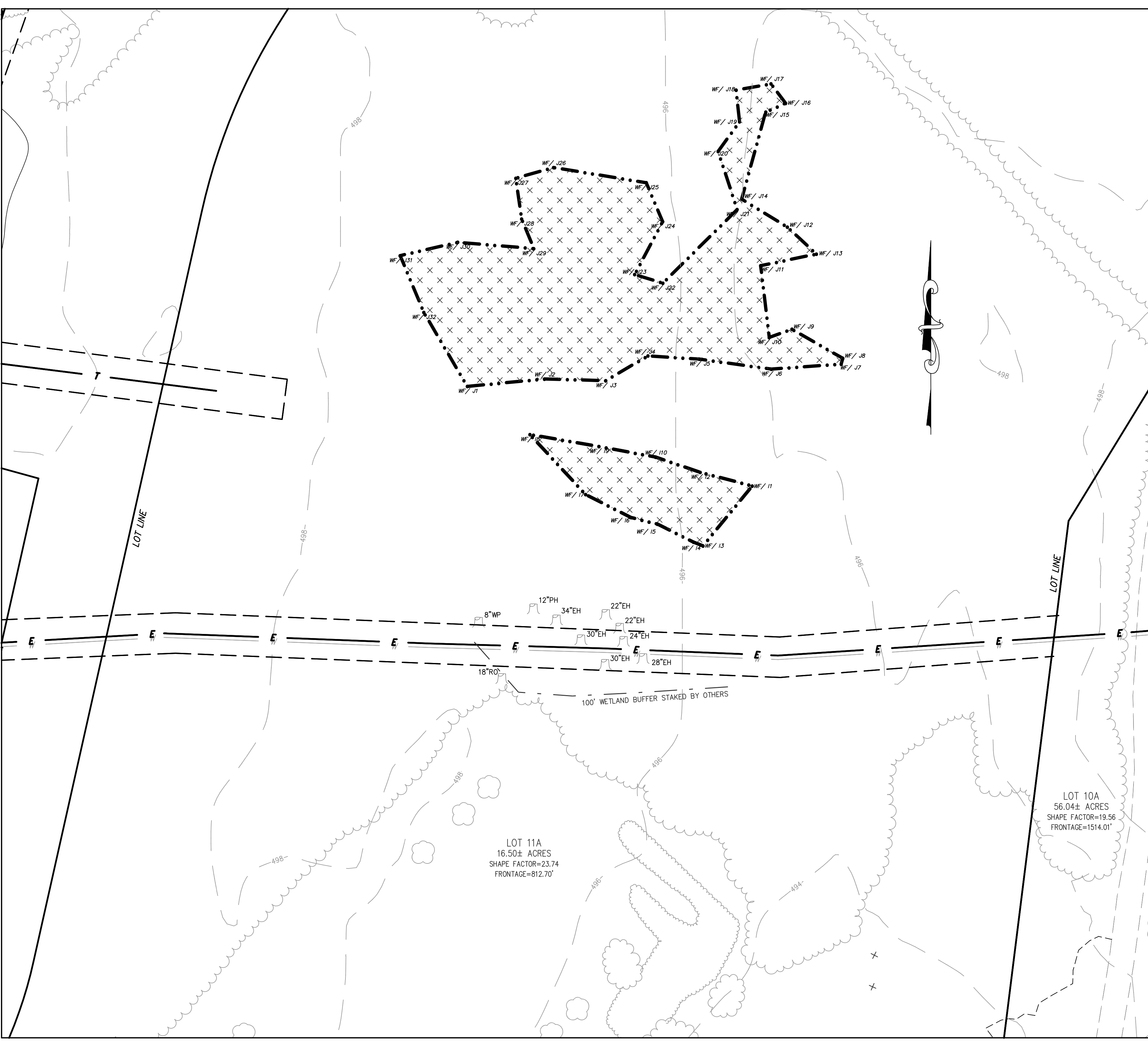


CAD FILE	1088-BASE.dwg
DRAWN BY	OCR
CHECKED BY	TRB
DATE	JUNE 18, 2021
PROJECT NO.	TPE-1088
PLAN NO.	M-246

TITLE

**EXISTING CONDITIONS
PLAN
ON
HILL TOP ROAD
IN
LANCASTER, MA
PREPARED FOR
B&C ASSOCIATES, INC.**

H:\1088-LANCASTER-HILL_TOP ROAD\DWG\EC\1088-BASE.DWG 06-28-21 12:14:22 PM - LAYOUT EC AREA-2



LOT 11A
16.50± ACRES
SHAPE FACTOR=23.74
FRONTAGE=812.70'

LOT 10A
56.04± ACRES
SHAPE FACTOR=19.56
FRONTAGE=1514.01'

100' WETLAND BUFFER STAKED BY OTHERS

LOT LINE

LOT LINE